

# Product Datasheet

## Ovalbumin Antibody NB600-922-0.1mg

Unit Size: 0.1 mg

Store at -20C short term. Aliquot and store at -80C long term. Avoid freeze-thaw cycles.

[www.novusbio.com](http://www.novusbio.com)



[technical@novusbio.com](mailto:technical@novusbio.com)

**Publications: 9**

Protocols, Publications, Related Products, Reviews, Research Tools and Images at:  
[www.novusbio.com/NB600-922](http://www.novusbio.com/NB600-922)

Updated 1/11/2023 v.20.1

**Earn rewards for product  
reviews and publications.**

Submit a publication at [www.novusbio.com/publications](http://www.novusbio.com/publications)

Submit a review at [www.novusbio.com/reviews/destination/NB600-922](http://www.novusbio.com/reviews/destination/NB600-922)



**NB600-922-0.1mg**

Ovalbumin Antibody

Product Information	
<b>Unit Size</b>	0.1 mg
<b>Concentration</b>	Please see the vial label for concentration. If unlisted please contact technical services.
<b>Storage</b>	Store at -20C short term. Aliquot and store at -80C long term. Avoid freeze-thaw cycles.
<b>Clonality</b>	Polyclonal
<b>Preservative</b>	0.01% Sodium Azide
<b>Isotype</b>	IgG
<b>Purity</b>	Multi-step
<b>Buffer</b>	0.02 M Potassium Phosphate, 0.15 M Sodium Chloride, pH 7.2

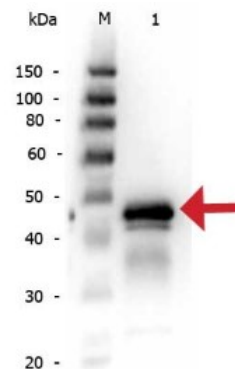
Product Description	
<b>Host</b>	Rabbit
<b>Gene ID</b>	396058
<b>Gene Symbol</b>	OVAL
<b>Species</b>	Chicken
<b>Reactivity Notes</b>	Cross reactivity against Ovalbumin from other sources is unknown
<b>Specificity/Sensitivity</b>	Reacts with ovalbumin.
<b>Immunogen</b>	Ovalbumin [Hen Egg White] (Uniprot: P01012)
<b>Notes</b>	<p>Rabbit Anti-Ovalbumin is an IgG fraction antibody purified from monospecific antiserum by a multi-step process which includes delipidation, salt fractionation and ion exchange chromatography followed by extensive dialysis against the buffer stated above. Assay by immunoelectrophoresis resulted in a single precipitin arc against anti-Rabbit Serum as well as purified and partially purified Ovalbumin [Hen Egg White]</p> <p>Store vial at -20C prior to opening. Aliquot contents and freeze at -20C or below for extended storage. Avoid cycles of freezing and thawing. Centrifuge product if not completely clear after standing at room temperature. This product is stable for several weeks at 4C as an undiluted liquid. Dilute only prior to immediate use.</p>

Product Application Details	
<b>Applications</b>	Western Blot, ELISA, Immunohistochemistry, Immunoprecipitation, Single Cell Western
<b>Recommended Dilutions</b>	Western Blot 1:500-1:2000, ELISA 1:5000-1:20000, Immunohistochemistry, Immunoprecipitation, Single Cell Western 1:10
<b>Application Notes</b>	<p>This product has been tested in Western Blot. Although not tested this product could be useful in assays such as ELISA, IHC and IP. Specific conditions for reactivity and signal detection should be optimized by the end user.</p> <p>SCW is validated using murine sarcoma cells</p>

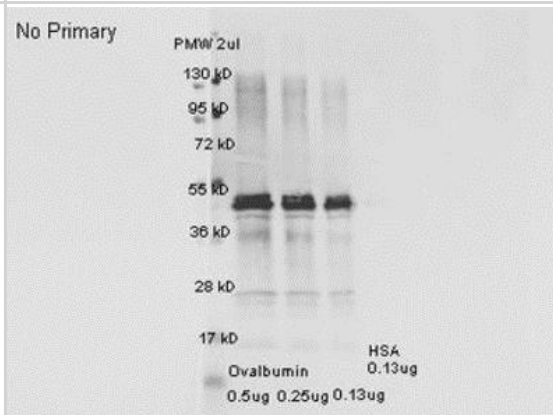


## Images

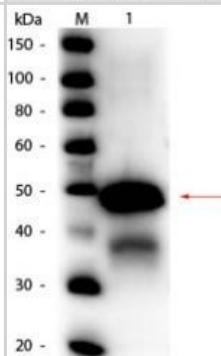
Western Blot: Ovalbumin Antibody [NB600-922] - Lane 1: Reduced Ovalbumin. Load: 50 ng. Primary antibody: Ovalbumin antibody at 1:1,000 overnight at 4C. Secondary antibody: Peroxidase rabbit secondary antibody at 1:40,000 for 30 min at RT. Block: Blocking Buffer for Fluorescent Western Blotting for 30 min at RT. Predicted/Observed size: 45 kDa, 45 kDa for Ovalbumin.



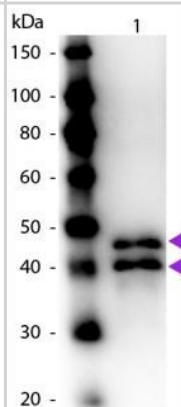
Western Blot: Ovalbumin Antibody [NB600-922] - Western blot detection of Ovalbumin from hen egg white using NB600-922 at 1:10,000. The blot was blocked ON at 4 degrees C in 3% BSA. The secondary antibody used was a DyLight 649 Conjugated Goat anti-rabbit IgG (H&L) diluted 1:20,000 and incubated 1 hr RT in blocking buffer for fluorescent western blotting.



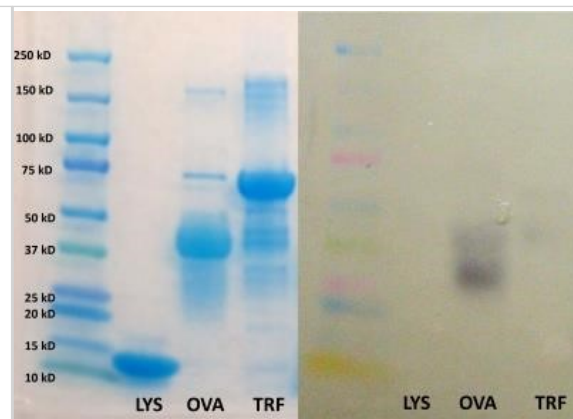
Western Blot: Ovalbumin Antibody [NB600-922] - Analysis using the HRP conjugate of NB600-922. Detection of Lane 1: Ovalbumin (Hen Egg). Load: 50 ng per lane. Dilution: 1:1,000. Predicted/Observed size: 43 kDa, 43 kDa for Ovalbumin. Other band(s): Ovalbumin splice variants and isoforms.



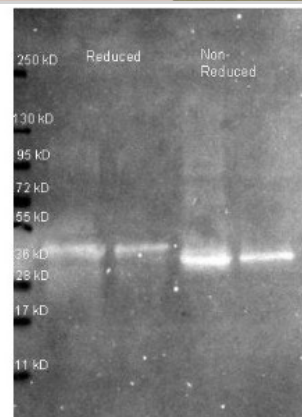
Western Blot: Ovalbumin Antibody [NB600-922] - Analysis using the HRP conjugate of NB600-922. Detection of Lane 1: Ovalbumin. Load: 50 ng per lane. Dilution: 1:1,000. Predicted/Observed size: 43 kDa, 43 kDa for Ovalbumin. Other band(s): Ovalbumin splice variants and isoforms.



Western Blot: Ovalbumin Antibody [NB600-922] - Analysis using the HRP conjugate of NB600-922. Detection of purified egg white proteins (lysozyme, ovalbumin, ovomucoprotein). Image from verified customer review.



Western Blot: Ovalbumin Antibody [NB600-922] - Lane 1: 1 ug Ovalbumin protein reduced. Lane 2: 0.25 ug Ovalbumin protein reduced. Lane 3: 1 ug Ovalbumin protein non-reduced. Lane 4: 0.25 ug Ovalbumin protein non-reduced. Primary antibody: Ovalbumin antibody at 1:5000 for overnight at 4C. Secondary antibody: Atto 425 conjugated goat anti rabbit secondary antibody at 1:10,000 for 1.5 hr at RT. Block: incubated with blocking buffer for ovalbumin. Other band(s): none.



## Publications

Kim Y, Shim J, Park J et al. Sequential verification of exogenous protein production in OVA gene-targeted chicken bioreactors Poultry Science Jan 1 2023 12:00AM [PMID: 36335737] (IHC-P, WB, Chicken)

Leary N, Walser S, He Y et al. Melanoma-derived extracellular vesicles mediate lymphatic remodelling and impair tumour immunity in draining lymph nodes Journal of extracellular vesicles Feb 1 2022 12:00AM [PMID: 35188342] (WB, Chicken)

Jin H, Wu Y, Bi S et al. Higher immune response induced by vaccination in Houhai acupoint relates to the lymphatic drainage of the injection site Res Vet Sci Apr 1 2020 12:00AM [PMID: 32224352] (WB)

Kaplan A, Joseph K Kinin formation in C1 inhibitor deficiency. J Allergy Clin Immunol Jan 6 2010 12:00AM [PMID: 20381848] (ELISA, Virus)

Gogesch P, Schulke S, Scheurer S et al. Modular MLV-VLPs co-displaying ovalbumin peptides and GM-CSF effectively induce expansion of CD11b+ APC and antigen-specific T cell responses in vitro Mol. Immunol. May 28 2018 12:00AM [PMID: 29852456] (WB)

Shimazaki Y, Takahashi A. Antibacterial activity of lysozyme-binding proteins from chicken egg white J. Microbiol. Methods Oct 3 2018 12:00AM [PMID: 30291881] (WB, Chicken)

Wang J, Zhang Y, Wei J et al. Lewis X oligosaccharides targeting to DC-SIGN enhanced antigen-specific immune response Immunology 2007 Jun [PMID: 17371544]

### Details:

This citation used the HRP version of this antibody.

Uhlig KM, Schulke S, Scheuplein VA et al. Lentiviral protein transfer vectors are an efficient vaccine-platform inducing strong antigen-specific cytotoxic T cell response J. Virol. 2015 Jun 17 [PMID: 26085166] (WB, Chicken)

Li JT, Rank MA, Squillace DL, Kita H. Ovalbumin content of influenza vaccines J Allergy Clin Immunol 2010 Jun [PMID: 20451987] (ELISA, Virus)



### **Novus Biologicals USA**

10730 E. Briarwood Avenue  
Centennial, CO 80112  
USA

Phone: 303.730.1950  
Toll Free: 1.888.506.6887  
Fax: 303.730.1966  
novus@novusbio.com

### **Bio-Techne Canada**

21 Canmotor Ave  
Toronto, ON M8Z 4E6  
Canada

Phone: 905.827.6400  
Toll Free: 855.668.8722  
Fax: 905.827.6402  
canada.inquires@bio-techne.com

### **Bio-Techne Ltd**

19 Barton Lane  
Abingdon Science Park  
Abingdon, OX14 3NB, United Kingdom

Phone: (44) (0) 1235 529449  
Free Phone: 0800 37 34 15  
Fax: (44) (0) 1235 533420  
info.EMEA@bio-techne.com

### **General Contact Information**

www.novusbio.com  
Technical Support: technical@novusbio.com  
Orders: orders@novusbio.com  
General: novus@novusbio.com

### **Products Related to NB600-922-0.1mg**

---

HAF008	Goat anti-Rabbit IgG Secondary Antibody [HRP (Horseradish Peroxidase)]
NB7160	Goat anti-Rabbit IgG (H+L) Secondary Antibody [HRP]
NBP2-24891	Rabbit IgG Isotype Control
P5241	Ovalbumin Native Protein

---

### **Limitations**

This product is for research use only and is not approved for use in humans or in clinical diagnosis. Primary Antibodies are guaranteed for 1 year from date of receipt.

For more information on our 100% guarantee, please visit [www.novusbio.com/guarantee](http://www.novusbio.com/guarantee)

Earn gift cards/discounts by submitting a review: [www.novusbio.com/reviews/submit/NB600-922](http://www.novusbio.com/reviews/submit/NB600-922)

Earn gift cards/discounts by submitting a publication using this product:  
[www.novusbio.com/publications](http://www.novusbio.com/publications)

