

Product Datasheet

Phospho-Tyrosine Antibody (13F9) NB600-907-0.05ml

Unit Size: 0.05 ml

Store at -20C. Avoid freeze-thaw cycles.

www.novusbio.com



technical@novusbio.com

Reviews: 1

Protocols, Publications, Related Products, Reviews, Research Tools and Images at:
www.novusbio.com/NB600-907

Updated 3/30/2022 v.20.1

**Earn rewards for product
reviews and publications.**

Submit a publication at www.novusbio.com/publications

Submit a review at www.novusbio.com/reviews/destination/NB600-907

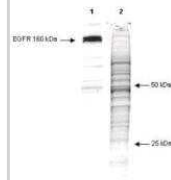


NB600-907-0.05ml**Phospho-Tyrosine Antibody (13F9)**

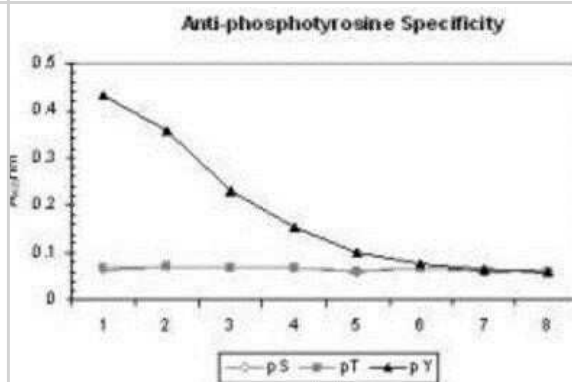
Product Information	
Unit Size	0.05 ml
Concentration	This product is unpurified. The exact concentration of antibody is not quantifiable.
Storage	Store at -20C. Avoid freeze-thaw cycles.
Clonality	Monoclonal
Clone	13F9
Preservative	0.01% Sodium Azide
Isotype	IgG1 Kappa
Purity	Unpurified
Buffer	Ascites
Product Description	
Host	Mouse
Species	Non-species specific
Specificity/Sensitivity	Reactivity is specific for phosphotyrosine and minimal cross reactivity is observed against phosphoserine or phosphothreonine.
Immunogen	This monoclonal antibody was produced after repeated immunizations of balb/c mice with Phospho-Tyrosine conjugated KLH.
Product Application Details	
Applications	Western Blot, ELISA
Recommended Dilutions	Western Blot 1:500-1:2000, ELISA 1:4000-1:20000
Application Notes	This monoclonal antibody reacts specifically with phosphotyrosine and shows minimal reactivity by ELISA and competitive ELISA with phosphoserine or phosphothreonine. The antibody reacts with free phosphotyrosine, phosphotyrosine conjugated - carriers such as thyroglobulin or BSA, and detects the presence of phosphotyrosine in proteins of both unstimulated and stimulated cell lysates. Although not tested, this antibody is likely functional in RIA, flow cytometry, immunohistochemistry and immunoprecipitation. Phosphorylation of tyrosine residues is associated with many growth factors and oncogene protein kinases, and is important for cell signaling in activation, proliferation and differentiation.

Images

Western Blot: Phospho-Tyrosine Antibody (13F9) [NB600-907] - Lane 1: phosphorylated EGFR in an A431 cell lysate. Lane 2: total protein in the unstimulated A431 cells lysate after coomassie staining. Load: 10 ug per lane. Primary antibody: phosphotyrosine antibody at 1:1000 for 1 hr at RT. Secondary antibody: IRDye800 Conjugated Goat-a-Mouse IgG [H&L] diluted 1:2,500 for 30' at room temperature. Block: 5% BLOTTO overnight at 4C. Other band(s): phosphotyrosine splice variants and isoforms.



ELISA: Phospho-Tyrosine Antibody (13F9) [NB600-907] - ELISA results of Mab anti-phosphotyrosine antibody tested against BSA conjugates of pT, pY and pS. Each well was coated with 0.1ug of conjugate. The starting dilution of antibody was 1:1000 and each point on the X-axis represents a 2-fold dilution.





Novus Biologicals USA

10730 E. Briarwood Avenue
Centennial, CO 80112
USA
Phone: 303.730.1950
Toll Free: 1.888.506.6887
Fax: 303.730.1966
nb-customerservice@bio-techne.com

Bio-Techne Canada

21 Canmotor Ave
Toronto, ON M8Z 4E6
Canada
Phone: 905.827.6400
Toll Free: 855.668.8722
Fax: 905.827.6402
canada.inquires@bio-techne.com

Bio-Techne Ltd

19 Barton Lane
Abingdon Science Park
Abingdon, OX14 3NB, United Kingdom
Phone: (44) (0) 1235 529449
Free Phone: 0800 37 34 15
Fax: (44) (0) 1235 533420
info.EMEA@bio-techne.com

General Contact Information

www.novusbio.com
Technical Support: nb-technical@bio-
techne.com
Orders: nb-customerservice@bio-techne.com
General: novus@novusbio.com

Limitations

This product is for research use only and is not approved for use in humans or in clinical diagnosis. Primary Antibodies are guaranteed for 1 year from date of receipt.

For more information on our 100% guarantee, please visit www.novusbio.com/guarantee

Earn gift cards/discounts by submitting a review: www.novusbio.com/reviews/submit/NB600-907

Earn gift cards/discounts by submitting a publication using this product:
www.novusbio.com/publications

