

Product Datasheet

Glycogen Synthase [p Ser641] Antibody - BSA Free NB600-611

Unit Size: 0.05 mg

Store at -20C. Avoid freeze-thaw cycles.

www.novusbio.com



technical@novusbio.com

Protocols, Publications, Related Products, Reviews, Research Tools and Images at:
www.novusbio.com/NB600-611

Updated 2/21/2025 v.20.1

Earn rewards for product
reviews and publications.

Submit a publication at www.novusbio.com/publications

Submit a review at www.novusbio.com/reviews/destination/NB600-611



NB600-611**Glycogen Synthase [p Ser641] Antibody - BSA Free**

Product Information	
Unit Size	0.05 mg
Concentration	Please see the vial label for concentration. If unlisted please contact technical services.
Storage	Store at -20C. Avoid freeze-thaw cycles.
Clonality	Polyclonal
Preservative	0.01% Sodium Azide
Isotype	IgG
Purity	Immunogen affinity purified
Buffer	0.02 M Potassium Phosphate, 0.15 M Sodium Chloride, pH 7.2
Product Description	
Description	<p>The product was affinity purified from monospecific antiserum by immunoaffinity purification. Antiserum was first purified against the phosphorylated form of the immunizing peptide. The resultant affinity purified antibody was then cross-adsorbed against the non-phosphorylated form of the immunizing peptide</p> <p>Store this antibody at -20C prior to opening. Aliquot contents and freeze at -20C or below for extended storage. Avoid cycles of freezing and thawing. Centrifuge product if not completely clear after standing at room temperature. This product is stable for several weeks at 4C as an undiluted liquid. Dilute only prior to immediate use.</p>
Host	Rabbit
Gene ID	2997
Gene Symbol	GYS1
Species	Human, Mouse
Reactivity Notes	Reactivity with non-phosphorylated human muscle glycogen synthase is less than 1% by ELISA. Cross reactivity with muscle glycogen synthase occurs in mouse tissue. Reactivity with muscle glycogen synthase from other sources has not been determined
Specificity/Sensitivity	Phospho Glycogen Synthase pS641 antibody is directed against human muscle glycogen synthase. The resultant affinity purified antibody was then cross-adsorbed against the non-phosphorylated form of the immunizing peptide. This phospho specific polyclonal antibody is specific for phosphorylated pS641 of human muscle glycogen synthase. Reactivity with non-phosphorylated human muscle glycogen synthase is less than 1% by ELISA. Cross reactivity with muscle glycogen synthase occurs in mouse tissue. Reactivity with muscle glycogen synthase from other sources has not been determined.
Immunogen	Human Muscle Glycogen Synthase phospho peptide corresponding to a S641 region of the human protein conjugated to Keyhole Limpet Hemocyanin (KLH). (Uniprot: P13807)
Product Application Details	
Applications	Western Blot, ELISA, Immunohistochemistry, Immunohistochemistry-Paraffin, Signal Stimulation
Recommended Dilutions	Western Blot 1:1000-1:10000, ELISA 1:20000-1:60000, Immunohistochemistry 1:1000-1:5000, Immunohistochemistry-Paraffin 1:1000 - 1:5000, Signal Stimulation

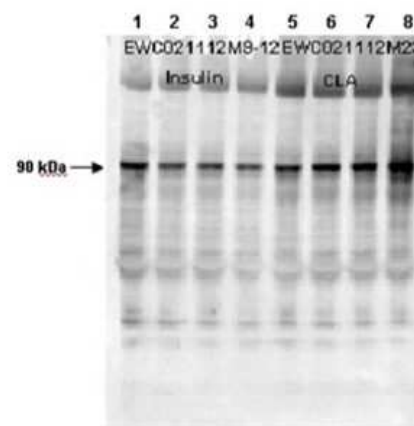


Application Notes

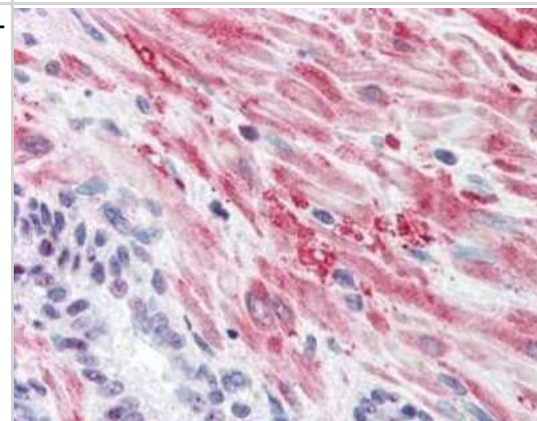
This product was tested by immunoblotting, immunohistochemistry, and ELISA. By ELISA the antibody was found to be reactive with the phosphorylated form of the immunizing peptide and minimally reactive with the non-phosphorylated form of the immunizing peptide. Immunoblotting will detect human and mouse muscle glycogen synthase. Although not tested, this antibody is likely functional in immunoprecipitation.

Images

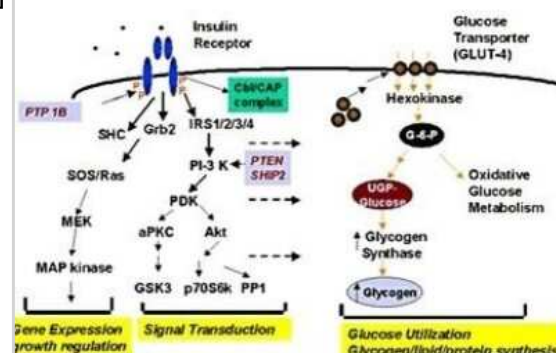
Western Blot: Glycogen Synthase [p Ser641] Antibody [NB600-611] - Affinity Purified Glycogen Synthase [p Ser641] antibody. Lane 1: mouse cardiac myocyte lysate mock treated. Lane 2: mouse cardiac myocyte lysate insulin treated at 10nM for 15'. Lane 3: mouse cardiac myocyte lysate insulin treated at 100nM for 15'. Lane 4: mouse cardiac myocyte lysate insulin treated at 1nM for 15'. Lane 5: mouse cardiac myocyte lysate mock treated. Lane 6: mouse cardiac myocyte lysate CLA treated at 4nM for 45'. Lane 7: mouse cardiac myocyte lysate CLA treated at 20nM for 45'. Lane 8: mouse cardiac myocyte lysate CLA treated at 100nM for 45'. Load: 12uL. Primary Antibody: pS641 at 1:1000. Secondary Antibody: HRP conjugated Gt-a-Rabbit IgG at 1:5,000 dilution preceded color development using Amersham's substrate system. Other detection methods will yield similar results.



Immunohistochemistry: Glycogen Synthase [p Ser641] Antibody [NB600-611] - Immunohistochemistry with Glycogen Synthase [p Ser641] antibody. Tissue: Human Prostate. Fixation: formalin-fixed, paraffin-embedded tissue. Antigen retrieval: heat-induced. Primary antibody: 5 ug/ml. Staining: antibody as precipitated red signal with a hematoxylin purple nuclear counterstain.



Signal Stimulation: Glycogen Synthase [p Ser641] Antibody [NB600-611] - Diagram of glycogen synthase as a component of insulin signal transduction pathways.





Novus Biologicals USA

10730 E. Briarwood Avenue
Centennial, CO 80112
USA
Phone: 303.730.1950
Toll Free: 1.888.506.6887
Fax: 303.730.1966
nb-customerservice@bio-techne.com

Bio-Techne Canada

21 Canmotor Ave
Toronto, ON M8Z 4E6
Canada
Phone: 905.827.6400
Toll Free: 855.668.8722
Fax: 905.827.6402
canada.inquires@bio-techne.com

Bio-Techne Ltd

19 Barton Lane
Abingdon Science Park
Abingdon, OX14 3NB, United Kingdom
Phone: (44) (0) 1235 529449
Free Phone: 0800 37 34 15
Fax: (44) (0) 1235 533420
info.EMEA@bio-techne.com

General Contact Information

www.novusbio.com
Technical Support: nb-technical@bio-techne.com
Orders: nb-customerservice@bio-techne.com
General: novus@novusbio.com

Products Related to NB600-611

HAF008	Goat anti-Rabbit IgG Secondary Antibody [HRP]
NB7160	Goat anti-Rabbit IgG (H+L) Secondary Antibody [HRP]
NBP2-24891	Rabbit IgG Isotype Control
H00002997-P01-10ug	Recombinant Human Glycogen Synthase GST (N-Term) Protein

Limitations

This product is for research use only and is not approved for use in humans or in clinical diagnosis. Primary Antibodies are guaranteed for 1 year from date of receipt.

For more information on our 100% guarantee, please visit www.novusbio.com/guarantee

Earn gift cards/discounts by submitting a review: www.novusbio.com/reviews/submit/NB600-611

Earn gift cards/discounts by submitting a publication using this product:
www.novusbio.com/publications

