

# Product Datasheet

## alpha Tubulin [ac Lys40] Antibody (6-11B-1) NB600-567

Unit Size: 0.1 ml

Store at 4C short term. Aliquot and store at -20C long term. Avoid freeze-thaw cycles.

[www.novusbio.com](http://www.novusbio.com)



[technical@novusbio.com](mailto:technical@novusbio.com)

**Reviews: 1 Publications: 2**

Protocols, Publications, Related Products, Reviews, Research Tools and Images at:  
[www.novusbio.com/NB600-567](http://www.novusbio.com/NB600-567)

Updated 9/11/2024 v.20.1

**Earn rewards for product  
reviews and publications.**

Submit a publication at [www.novusbio.com/publications](http://www.novusbio.com/publications)

Submit a review at [www.novusbio.com/reviews/destination/NB600-567](http://www.novusbio.com/reviews/destination/NB600-567)



**NB600-567**

alpha Tubulin [ac Lys40] Antibody (6-11B-1)

Product Information	
Unit Size	0.1 ml
Concentration	This product is unpurified. The exact concentration of antibody is not quantifiable.
Storage	Store at 4C short term. Aliquot and store at -20C long term. Avoid freeze-thaw cycles.
Clonality	Monoclonal
Clone	6-11B-1
Preservative	0.9% Sodium Azide
Isotype	IgG2b
Purity	Unpurified
Buffer	Ascites
Target Molecular Weight	50 kDa

Product Description	
Host	Mouse
Gene ID	7846
Gene Symbol	TUBA1A
Species	Human, Mouse, Rat, Porcine, Amphibian, Bovine, Canine, Chicken, Hamster, Invertebrate, Parasite, Plant, Primate, Protozoa
Reactivity Notes	Please note that this antibody is reactive to Mouse and derived from the same host, Mouse. Additional Mouse on Mouse blocking steps may be required for IHC and ICC experiments. Please contact Technical Support for more information.
Marker	Microtubule Marker
Specificity/Sensitivity	This alpha Tubulin [ac Lys40] Antibody (6-11B-1) recognizes an epitope located on the alpha 3 isoform of Chlamydomonas axonemal alpha-tubulin, within four residues of Lys-40 when this amino acid is acetylated
Immunogen	This alpha Tubulin [ac Lys40] Antibody (6-11B-1) was developed against acetylated tubulin from the outer arm of Strongylocentrotus purpuratus (sea urchin)

Product Application Details	
Applications	Western Blot, Dot Blot, ELISA, Electron Microscopy, Immunocytochemistry/ Immunofluorescence, Immunohistochemistry, Immunoprecipitation, Radioimmunoassay
Recommended Dilutions	Western Blot 1:2000, ELISA 1:100-1:2000, Immunohistochemistry 1:10-1:500, Immunocytochemistry/ Immunofluorescence 1:10-1:2000, Immunoprecipitation, Radioimmunoassay 1:100-1:2000, Dot Blot 1:100-1:2000, Electron Microscopy 1:10-1:500

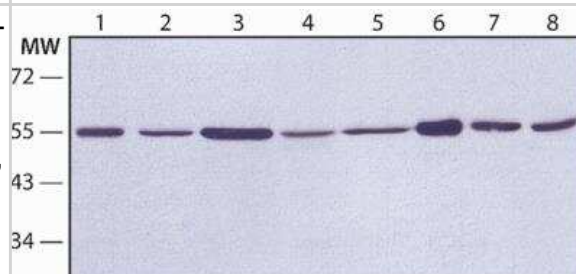


## Images

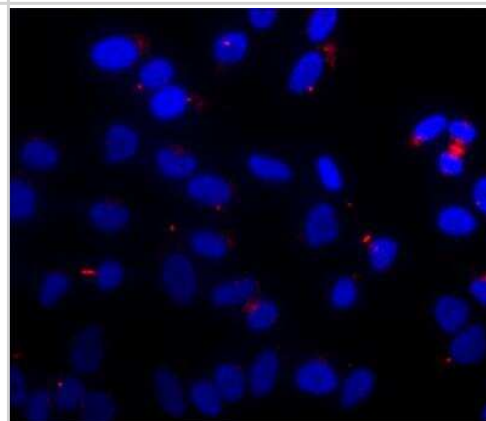
Immunohistochemistry: alpha Tubulin [ac Lys40] Antibody (6-11B-1) [NB600-567] - Nerve pathways in the embryonic zebrafish brain and spinal cord revealed by alpha Tubulin (ac Lys40) Antibody (6-11B-1). Immunoperoxidase staining of a whole-mount embryo at 24 hours of development.



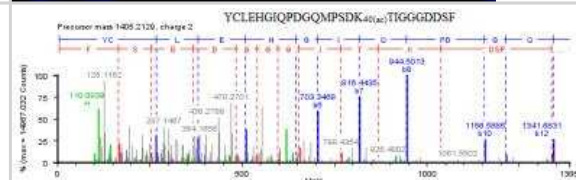
Western Blot: alpha Tubulin [ac Lys40] Antibody (6-11B-1) [NB600-567] - Western Blot validation of monoclonal anti-Acetylated Tubulin antibody clone: 6-11B-1 at 1:2000 dilution with goat anti-Mouse IgG-Peroxidase secondary antibody/chemiluminescent substrate development. The lysates employed were from cell lines: 1. HeLa, 2. U87, 3. COS7, 4. P19, 5. RAT2, 6. CHO, 7. MDBK and 8. MDCK Alpha tubulin molecular weight: 50 kDa.



Immunocytochemistry/Immunofluorescence: alpha Tubulin [ac Lys40] Antibody (6-11B-1) [NB600-567] - HeLa cells were fixed with 4% paraformaldehyde followed permeabilization with 0.5% Triton X-100. Fixed cells were stained with 1:2,000 monoclonal Tubulin, Acetylated antibody Clone: 6-11B-1. The antibody was detected using goat anti-Mouse IgG, Cy3 conjugate followed by counterstaining with DAPI (blue).



Immunoprecipitation: alpha Tubulin [ac Lys40] Antibody (6-11B-1) [NB600-567] - Identification of a surrogate peptide YCLEHGIQPDGQMPSDK40(ac)TIGGGDDSF with mass spectrometry. This peptide was immunoprecipitated with 6-11B-1 mAb from peptic digested rat brain tissue lysate. Image submitted via customer review.



## Publications

Mardilovich K, Gabrielsen M et al. Elevated LIM kinase 1 in nonmetastatic prostate cancer reflects its role in facilitating androgen receptor nuclear translocation. Mol Cancer Ther 2015-01-01 [PMID: 25344584] (ICC/IF, Human)

Yang X, Naughton S, Ha Z et al. Mass Spectrometric Quantitation of Tubulin Acetylation from Pepsin-Digested Rat Brain Tissue Using a Novel Stable Isotope Standard and Capture by Anti-Peptide Antibody (SISCAPA) Method. Anal Chem 2018-01-24 [PMID: 29320166] (IP, Rat)



### Novus Biologicals USA

10730 E. Briarwood Avenue  
Centennial, CO 80112  
USA  
Phone: 303.730.1950  
Toll Free: 1.888.506.6887  
Fax: 303.730.1966  
nb-customerservice@bio-techne.com

### Bio-Techne Canada

21 Canmotor Ave  
Toronto, ON M8Z 4E6  
Canada  
Phone: 905.827.6400  
Toll Free: 855.668.8722  
Fax: 905.827.6402  
canada.inquires@bio-techne.com

### Bio-Techne Ltd

19 Barton Lane  
Abingdon Science Park  
Abingdon, OX14 3NB, United Kingdom  
Phone: (44) (0) 1235 529449  
Free Phone: 0800 37 34 15  
Fax: (44) (0) 1235 533420  
info.EMEA@bio-techne.com

### General Contact Information

www.novusbio.com  
Technical Support: nb-technical@bio-techne.com  
Orders: nb-customerservice@bio-techne.com  
General: novus@novusbio.com

### Limitations

This product is for research use only and is not approved for use in humans or in clinical diagnosis. Primary Antibodies are guaranteed for 1 year from date of receipt.

For more information on our 100% guarantee, please visit [www.novusbio.com/guarantee](http://www.novusbio.com/guarantee)

Earn gift cards/discounts by submitting a review: [www.novusbio.com/reviews/submit/NB600-567](http://www.novusbio.com/reviews/submit/NB600-567)

Earn gift cards/discounts by submitting a publication using this product:

[www.novusbio.com/publications](http://www.novusbio.com/publications)

