

# Product Datasheet

## T7 Epitope Tag Antibody [Biotin] NB600-372B

Unit Size: 0.1 ml

Store at 4C. Do not freeze.

[www.novusbio.com](http://www.novusbio.com)



[technical@novusbio.com](mailto:technical@novusbio.com)

Protocols, Publications, Related Products, Reviews, Research Tools and Images at:  
[www.novusbio.com/NB600-372B](http://www.novusbio.com/NB600-372B)

Updated 1/27/2021 v.20.1

Earn rewards for product  
reviews and publications.

Submit a publication at [www.novusbio.com/publications](http://www.novusbio.com/publications)

Submit a review at [www.novusbio.com/reviews/destination/NB600-372B](http://www.novusbio.com/reviews/destination/NB600-372B)



**NB600-372B****T7 Epitope Tag Antibody [Biotin]**

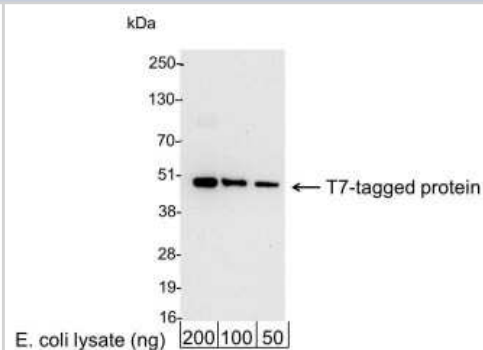
Product Information	
Unit Size	0.1 ml
Concentration	1.0 mg/ml
Storage	Store at 4C. Do not freeze.
Clonality	Polyclonal
Preservative	0.05% Sodium Azide
Isotype	IgG
Conjugate	Biotin
Purity	Immunogen affinity purified
Buffer	PBS and 0.2% BSA

Product Description	
Host	Rabbit
Species	Non-species specific, Drosophila
Reactivity Notes	Drosophila reactivity reported in scientific literature (PMID: 29689197).
Immunogen	Rabbits were immunized with T7 cleavage site (MASMTGGQQMG) conjugated to KLH. Antibody was isolated by affinity chromatography using the peptide immobilized on solid support. Rabbit anti-human T7 affinity purified antibodies were coupled to peptide immobilized on solid support.

Product Application Details	
Applications	Western Blot, ELISA
Recommended Dilutions	Western Blot 1:10000-1:100000, ELISA 1:100-1:2000

**Images**

Western Blot: T7 Epitope Tag Antibody [Biotin] [NB600-372B] - 200, 100, or 50 ng of E. coli whole cell lysate expressing a multi-tag fusion protein. Antibody used at 0.04 ug/ml (1:25,000). Detection: Streptavidin-HRP (0.1 ug/ml) and chemiluminescence with an exposure time of 30 seconds.





### **Novus Biologicals USA**

10730 E. Briarwood Avenue  
Centennial, CO 80112  
USA  
Phone: 303.730.1950  
Toll Free: 1.888.506.6887  
Fax: 303.730.1966  
nb-customerservice@bio-techne.com

### **Bio-Techne Canada**

21 Canmotor Ave  
Toronto, ON M8Z 4E6  
Canada  
Phone: 905.827.6400  
Toll Free: 855.668.8722  
Fax: 905.827.6402  
canada.inquires@bio-techne.com

### **Bio-Techne Ltd**

19 Barton Lane  
Abingdon Science Park  
Abingdon, OX14 3NB, United Kingdom  
Phone: (44) (0) 1235 529449  
Free Phone: 0800 37 34 15  
Fax: (44) (0) 1235 533420  
info.EMEA@bio-techne.com

### **General Contact Information**

www.novusbio.com  
Technical Support: nb-technical@bio-  
techne.com  
Orders: nb-customerservice@bio-techne.com  
General: novus@novusbio.com

### **Limitations**

This product is for research use only and is not approved for use in humans or in clinical diagnosis. Primary Antibodies are guaranteed for 1 year from date of receipt.

For more information on our 100% guarantee, please visit [www.novusbio.com/guarantee](http://www.novusbio.com/guarantee)

Earn gift cards/discounts by submitting a review: [www.novusbio.com/reviews/submit/NB600-372B](http://www.novusbio.com/reviews/submit/NB600-372B)

Earn gift cards/discounts by submitting a publication using this product:  
[www.novusbio.com/publications](http://www.novusbio.com/publications)

