

# Product Datasheet

## LEO1 Antibody - BSA Free NB600-276

Unit Size: 100 ul

Store at 4C. Do not freeze.

[www.novusbio.com](http://www.novusbio.com)



[technical@novusbio.com](mailto:technical@novusbio.com)

### Publications: 2

Protocols, Publications, Related Products, Reviews, Research Tools and Images at:  
[www.novusbio.com/NB600-276](http://www.novusbio.com/NB600-276)

Updated 2/21/2025 v.20.1

Earn rewards for product  
reviews and publications.

Submit a publication at [www.novusbio.com/publications](http://www.novusbio.com/publications)

Submit a review at [www.novusbio.com/reviews/destination/NB600-276](http://www.novusbio.com/reviews/destination/NB600-276)



**NB600-276**

LEO1 Antibody - BSA Free

**Product Information**

<b>Unit Size</b>	100 ul
<b>Concentration</b>	1.0 mg/ml
<b>Storage</b>	Store at 4C. Do not freeze.
<b>Clonality</b>	Polyclonal
<b>Preservative</b>	0.09% Sodium Azide
<b>Isotype</b>	IgG
<b>Purity</b>	Immunogen affinity purified
<b>Buffer</b>	Tris-Citrate/Phosphate (pH 7.0 - 8.0)

**Product Description**

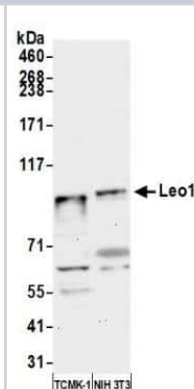
<b>Host</b>	Rabbit
<b>Gene ID</b>	123169
<b>Gene Symbol</b>	LEO1
<b>Species</b>	Human, Mouse
<b>Immunogen</b>	A synthetic peptide which maps to a region between residues 550 and 600 of human senescence downregulated leo1-like using the numbering given in TrEMBL entry Q8WVC0 (GeneID 123169).

**Product Application Details**

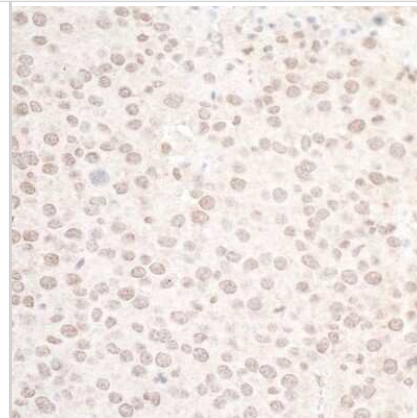
<b>Applications</b>	Western Blot, Immunohistochemistry, Immunohistochemistry-Paraffin, Immunoprecipitation
<b>Recommended Dilutions</b>	Western Blot 1:1000-1:5000, Immunohistochemistry, Immunoprecipitation 2-8 ug/mg lysate, Immunohistochemistry-Paraffin 1:1000-1:5000
<b>Application Notes</b>	Epitope retrieval with Tris-EDTA pH9.0 is recommended for FFPE tissue sections.

**Images**

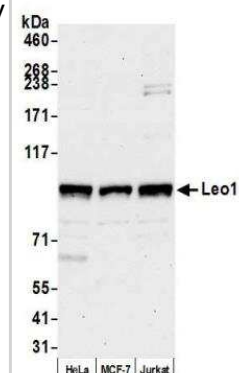
Western Blot: LEO1 Antibody [NB600-276] - Detection of mouse Leo1 by western blot. Samples: Whole cell lysate (15 ug) from TCMK-1 and NIH 3T3 cells prepared using NETN lysis buffer. Antibody: Affinity purified rabbit anti-Leo1 antibody [NB600-276] used for WB at 0.04 ug/ml. Detection: Chemiluminescence with an exposure time of 30 seconds.



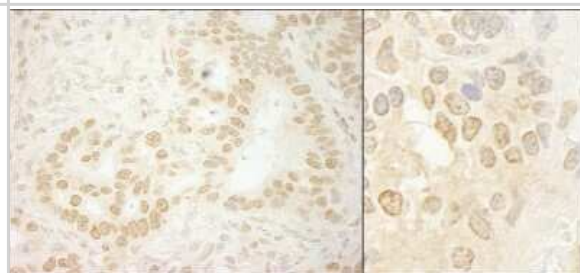
**Immunohistochemistry: LEO1 Antibody [NB600-276] - Detection of mouse Leo1 by immunohistochemistry.** Sample: FFPE section of mouse renal cell carcinoma. Antibody: Affinity purified rabbit anti-Leo1 (NB600-276). Detection: DAB



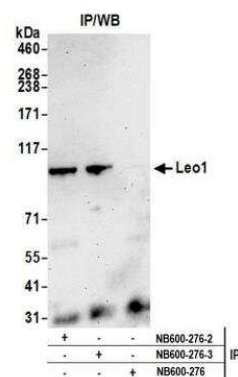
**Western Blot: LEO1 Antibody [NB600-276] - Detection of human Leo1 by western blot.** Samples: Whole cell lysate (15 ug) from HeLa, MCF-7, and Jurkat cells prepared using NETN lysis buffer. Antibody: Affinity purified rabbit anti-Leo1 antibody [NB600-276] used for WB at 0.04 ug/ml. Detection: Chemiluminescence with an exposure time of 30 seconds.



**Immunohistochemistry: LEO1 Antibody [NB600-276] - Sample: FFPE section of human stomach carcinoma (left) and mouse teratoma (right).** Antibody: Affinity purified rabbit anti-LEO1 used at a dilution of 1:5,000 (0.2ug/ml) and 1:1,000 (1ug/ml). Detection: DAB



**Immunoprecipitation: LEO1 Antibody [NB600-276] - Detection of human Leo1 by western blot of immunoprecipitates.** Samples: Whole cell lysate (1.0 mg per IP reaction; 20% of IP loaded) from HeLa cells prepared using NETN lysis buffer. Antibodies: Affinity purified rabbit anti-Leo1 antibody [NB600-276] (lot 3) used for IP at 6 ug per reaction. Leo1 was also immunoprecipitated by a previous lot of this antibody (lot 2). For blotting immunoprecipitated Leo1, NB600-276 was used at 0.04 ug/ml. Detection: Chemiluminescence with an exposure time of 75 seconds.



## Publications

Endres T, Solvie D, Heidelberger JB, et al. Ubiquitylation of MYC couples transcription elongation with double-strand break repair at active promoters Molecular cell 2021-01-15 [PMID: 33453168]

Miyazaki K, Inoue S, Yamada K et al. Differential usage of alternate promoters of the human stress response gene ATF3 in stress response and cancer cells. Nucleic Acids Res 2009-04-01 [PMID: 19136462]



### **Novus Biologicals USA**

10730 E. Briarwood Avenue  
Centennial, CO 80112  
USA

Phone: 303.730.1950

Toll Free: 1.888.506.6887

Fax: 303.730.1966

[nb-customerservice@bio-techne.com](mailto:nb-customerservice@bio-techne.com)

### **Bio-Techne Canada**

21 Canmotor Ave  
Toronto, ON M8Z 4E6  
Canada

Phone: 905.827.6400

Toll Free: 855.668.8722

Fax: 905.827.6402

[canada.inquires@bio-techne.com](mailto:canada.inquires@bio-techne.com)

### **Bio-Techne Ltd**

19 Barton Lane  
Abingdon Science Park  
Abingdon, OX14 3NB, United Kingdom

Phone: (44) (0) 1235 529449

Free Phone: 0800 37 34 15

Fax: (44) (0) 1235 533420

[info.EMEA@bio-techne.com](mailto:info.EMEA@bio-techne.com)

### **General Contact Information**

[www.novusbio.com](http://www.novusbio.com)

Technical Support: [nb-technical@bio-techne.com](mailto:nb-technical@bio-techne.com)

Orders: [nb-customerservice@bio-techne.com](mailto:nb-customerservice@bio-techne.com)

General: [novus@novusbio.com](mailto:novus@novusbio.com)

### **Products Related to NB600-276**

---

NBL1-12488	LEO1 Overexpression Lysate
HAF008	Goat anti-Rabbit IgG Secondary Antibody [HRP]
NB7160	Goat anti-Rabbit IgG (H+L) Secondary Antibody [HRP]
NBP2-24891	Rabbit IgG Isotype Control

---

### **Limitations**

This product is for research use only and is not approved for use in humans or in clinical diagnosis. Primary Antibodies are guaranteed for 1 year from date of receipt.

For more information on our 100% guarantee, please visit [www.novusbio.com/guarantee](http://www.novusbio.com/guarantee)

Earn gift cards/discounts by submitting a review: [www.novusbio.com/reviews/submit/NB600-276](http://www.novusbio.com/reviews/submit/NB600-276)

Earn gift cards/discounts by submitting a publication using this product:  
[www.novusbio.com/publications](http://www.novusbio.com/publications)

