

# Product Datasheet

## MTA1 Antibody - BSA Free

### NB600-260

Unit Size: 100 ul

Store at 4C. Do not freeze.

[www.novusbio.com](http://www.novusbio.com)



[technical@novusbio.com](mailto:technical@novusbio.com)

#### Publications: 6

Protocols, Publications, Related Products, Reviews, Research Tools and Images at:  
[www.novusbio.com/NB600-260](http://www.novusbio.com/NB600-260)

Updated 2/21/2025 v.20.1

Earn rewards for product  
reviews and publications.

Submit a publication at [www.novusbio.com/publications](http://www.novusbio.com/publications)

Submit a review at [www.novusbio.com/reviews/destination/NB600-260](http://www.novusbio.com/reviews/destination/NB600-260)



**NB600-260**

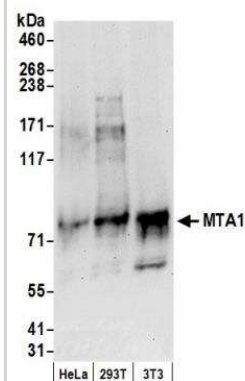
MTA1 Antibody - BSA Free

Product Information	
Unit Size	100 ul
Concentration	1.0 mg/ml
Storage	Store at 4C. Do not freeze.
Clonality	Polyclonal
Preservative	0.09% Sodium Azide
Isotype	IgG
Purity	Immunogen affinity purified
Buffer	Tris-Citrate/Phosphate (pH 7.0 - 8.0)
Target Molecular Weight	81 kDa
Product Description	
Host	Rabbit
Gene ID	9112
Gene Symbol	MTA1
Species	Human, Mouse
Immunogen	The immunogen recognized by this antibody maps to a region between residues 400 and 450 of human Metastasis Associated Protein 1 using the numbering given in Swiss-Prot entry Q13330 (GeneID 9112).
Product Application Details	
Applications	Western Blot, Immunohistochemistry, Immunohistochemistry-Paraffin, Immunoprecipitation
Recommended Dilutions	Western Blot 1:2000 - 1:10000, Immunohistochemistry, Immunoprecipitation 2 - 10 ug/mg lysate, Immunohistochemistry-Paraffin 1:500-1:2000
Application Notes	Epitope retrieval with citrate buffer pH 6.0 is recommended for FFPE tissue sections.

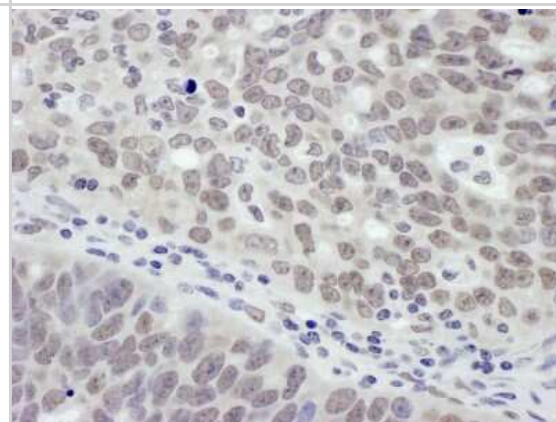


## Images

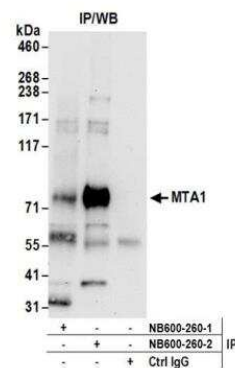
**Western Blot: MTA1 Antibody [NB600-260] - Detection of Human and Mouse MTA1 by Western Blot.** Samples: Whole cell lysate (50 ug) from HeLa, 293T, and mouse NIH3T3 cells prepared using NETN lysis buffer. Antibody: Affinity purified rabbit anti-MTA1 antibody NB600-260 used for WB at 0.1 ug/ml. Detection: Chemiluminescence with an exposure time of 30 seconds.



**Immunohistochemistry-Paraffin: MTA1 Antibody [NB600-260] - Sample:** FFPE section of human ovarian carcinoma. Antibody: Affinity purified rabbit anti- MTA1 used at a dilution of 1:1,000 (1 ug/ml). Detection: DAB



**Immunoprecipitation: MTA1 Antibody [NB600-260] - Detection of human MTA1 by western blot of immunoprecipitates.** Samples: Whole cell lysate (0.5 or 1.0 mg per IP reaction; 20% of IP loaded) from HeLa cells prepared using NETN lysis buffer. Antibodies: Affinity purified rabbit anti-MTA1 antibody NB600-260 (lot NB600-260-2) used for IP at 6 ug per reaction. MTA1 was also immunoprecipitated by rabbit anti-MTA1 antibody NB600-260-1. For blotting immunoprecipitated MTA1, NB600-260 was used at 1 ug/ml. Detection: Chemiluminescence with an exposure time of 30 seconds.



## Publications

Reddy SD, Pakala SB, Molli PR et al. Metastasis-associated protein 1/histone deacetylase 4-nucleosome remodeling and deacetylase complex regulates phosphatase and tensin homolog gene expression and function. J Biol Chem 2012-08-01 [PMID: 22700976]

Pakala SB, Singh K, Reddy SD et al. TGF-beta1 signaling targets metastasis-associated protein 1, a new effector in epithelial cells. Oncogene 2011-05-01 [PMID: 21258411]

Ghanta KS, Pakala SB, Reddy SD et al. MTA1 coregulation of transglutaminase 2 expression and function during inflammatory response. J Biol Chem 2011-03-01 [PMID: 21156794]

Pakala SB, Reddy SD, Bui-Nguyen TM et al. MTA1 coregulator regulates LPS response via MyD88-dependent signaling. J Biol Chem 2010-10-01 [PMID: 20702415]

Li DQ, Divijendra Natha Reddy S, Pakala SB et al. MTA1 coregulator regulates p53 stability and function. J Biol Chem 2009-12-01 [PMID: 19837670]

Khaleque MA, Bharti A, Gong J et al. Heat shock factor 1 represses estrogen-dependent transcription through association with MTA1. Oncogene 2008-03-01 [PMID: 17922035]



### **Novus Biologicals USA**

10730 E. Briarwood Avenue  
Centennial, CO 80112  
USA  
Phone: 303.730.1950  
Toll Free: 1.888.506.6887  
Fax: 303.730.1966  
nb-customerservice@bio-techne.com

### **Bio-Techne Canada**

21 Canmotor Ave  
Toronto, ON M8Z 4E6  
Canada  
Phone: 905.827.6400  
Toll Free: 855.668.8722  
Fax: 905.827.6402  
canada.inquires@bio-techne.com

### **Bio-Techne Ltd**

19 Barton Lane  
Abingdon Science Park  
Abingdon, OX14 3NB, United Kingdom  
Phone: (44) (0) 1235 529449  
Free Phone: 0800 37 34 15  
Fax: (44) (0) 1235 533420  
info.EMEA@bio-techne.com

### **General Contact Information**

www.novusbio.com  
Technical Support: nb-technical@bio-techne.com  
Orders: nb-customerservice@bio-techne.com  
General: novus@novusbio.com

### **Products Related to NB600-260**

---

NB800-PC1	HeLa Whole Cell Lysate
HAF008	Goat anti-Rabbit IgG Secondary Antibody [HRP]
NB7160	Goat anti-Rabbit IgG (H+L) Secondary Antibody [HRP]
NBP2-24891	Rabbit IgG Isotype Control

---

### **Limitations**

This product is for research use only and is not approved for use in humans or in clinical diagnosis. Primary Antibodies are guaranteed for 1 year from date of receipt.

For more information on our 100% guarantee, please visit [www.novusbio.com/guarantee](http://www.novusbio.com/guarantee)

Earn gift cards/discounts by submitting a review: [www.novusbio.com/reviews/submit/NB600-260](http://www.novusbio.com/reviews/submit/NB600-260)

Earn gift cards/discounts by submitting a publication using this product:  
[www.novusbio.com/publications](http://www.novusbio.com/publications)

