

Product Datasheet

RCOR1/CoREST Antibody

NB600-240

Unit Size: 100 ul

Store at 4C. Do not freeze.

www.novusbio.com



technical@novusbio.com

Protocols, Publications, Related Products, Reviews, Research Tools and Images at:
www.novusbio.com/NB600-240

Updated 6/18/2018 v.20.1

Earn rewards for product
reviews and publications.

Submit a publication at www.novusbio.com/publications

Submit a review at www.novusbio.com/reviews/destination/NB600-240



NB600-240

RCOR1/CoREST Antibody

Product Information	
Unit Size	100 ul
Concentration	1.0 mg/ml
Storage	Store at 4C. Do not freeze.
Clonality	Polyclonal
Preservative	0.09% Sodium Azide
Isotype	IgG
Purity	Immunogen affinity purified
Buffer	Tris-Citrate/Phosphate (pH 7.0 - 8.0)

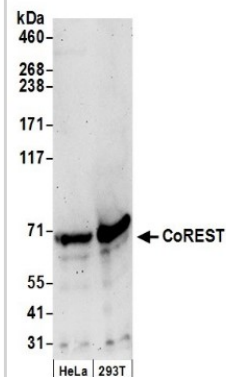
Product Description	
Host	Rabbit
Gene ID	23186
Gene Symbol	RCOR1
Species	Human
Immunogen	A synthetic peptide that maps to a region between residues 425 and the C-terminus (residue 482) of human REST (RE1-silencing transcription factor) corepressor using the numbering given in entry NP_055971.1 (GeneID 23186)

Product Application Details	
Applications	Western Blot, Immunohistochemistry, Immunohistochemistry-Paraffin
Recommended Dilutions	Western Blot 1:2500-1:15000, Immunohistochemistry 1:10-1:500, Immunohistochemistry-Paraffin 1:500 - 1:2000
Application Notes	Epitope retrieval with citrate buffer pH6.0 is recommended for FFPE tissue sections.

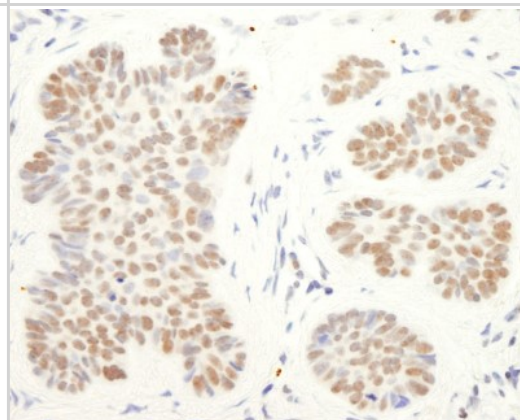


Images

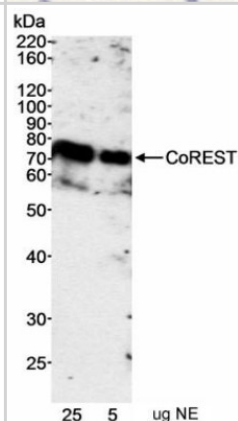
Western Blot: RCOR1/CoREST Antibody [NB600-240] - Samples: Whole cell lysate (50 ug) from HeLa and 293T cells prepared using NETN lysis buffer. Antibody: Affinity purified rabbit anti-CoREST antibody used for WB at 0.66 ug/ml. Detection: Chemiluminescence with an exposure time of 3 minutes.



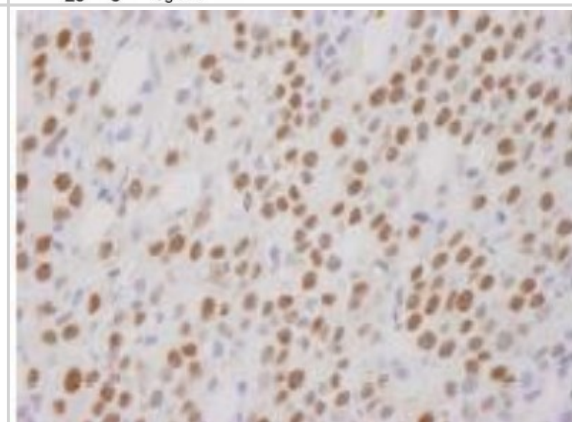
Immunohistochemistry: RCOR1/CoREST Antibody [NB600-240] - Sample: FFPE section of human skin carcinoma. Antibody: Affinity purified rabbit anti-CoREST used at a dilution of 1:5,000 (0.2ug/ml). Detection: DAB staining using Immunohistochemistry Accessory Kit.



Western Blot: RCOR1/CoREST Antibody [NB600-240] - Detection of Human CoREST by Western Blot. Samples: Nuclear extract (5 and 25 mcg) from HeLa cells. Antibody: Affinity purified rabbit anti-CoREST antibody (NB600-240) used at 0.2 mcg/ml. Detection: Chemiluminescence with a 10 minute exposure.



Immunohistochemistry-Paraffin: RCOR1/CoREST Antibody [NB600-240] - Human metastatic bone marrow. Affinity purified rabbit anti-CoREST used at a dilution of 1:250. Detection: DAB staining using Immunohistochemistry Accessory Kit





Novus Biologicals USA

10730 E. Briarwood Avenue
Centennial, CO 80112
USA

Phone: 303.730.1950
Toll Free: 1.888.506.6887
Fax: 303.730.1966
novus@novusbio.com

Novus Biologicals Canada

461 North Service Road West, Unit B37
Oakville, ON L6M 2V5
Canada

Phone: 905.827.6400
Toll Free: 855.668.8722
Fax: 905.827.6402
canada@novusbio.com

Novus Biologicals Europe

19 Barton Lane
Abingdon Science Park
Abingdon, OX14 3NB, United Kingdom

Phone: (44) (0) 1235 529449
Free Phone: 0800 37 34 15
Fax: (44) (0) 1235 533420
info@bio-techne.com

General Contact Information

www.novusbio.com
Technical Support: technical@novusbio.com
Orders: orders@novusbio.com
General: novus@novusbio.com

Products Related to NB600-240

NB800-PC9	HeLa Nuclear Cell Lysate
HAF008	Goat anti-Rabbit IgG Secondary Antibody [HRP (Horseradish Peroxidase)]
NB7156	Goat anti-Rabbit IgG (H+L) Secondary Antibody
NBP2-24891	Rabbit IgG Isotype Control

Limitations

This product is for research use only and is not approved for use in humans or in clinical diagnosis. Primary Antibodies are guaranteed for 1 year from date of receipt.

For more information on our 100% guarantee, please visit www.novusbio.com/guarantee

Earn gift cards/discounts by submitting a review: www.novusbio.com/reviews/submit/NB600-240

Earn gift cards/discounts by submitting a publication using this product:
www.novusbio.com/publications

