

Product Datasheet

BLIMP1/PRDM1 Antibody (3H2-E8) [Biotin] NB600-235B

Unit Size: 0.1 ml

Store at 4C in the dark.

www.novusbio.com



technical@novusbio.com

Reviews: 1

Protocols, Publications, Related Products, Reviews, Research Tools and Images at:
www.novusbio.com/NB600-235B

Updated 10/23/2024 v.20.1

**Earn rewards for product
reviews and publications.**

Submit a publication at www.novusbio.com/publications

Submit a review at www.novusbio.com/reviews/destination/NB600-235B



NB600-235B

BLIMP1/PRDM1 Antibody (3H2-E8) [Biotin]

Product Information

Unit Size	0.1 ml
Concentration	Please see the vial label for concentration. If unlisted please contact technical services.
Storage	Store at 4C in the dark.
Clonality	Monoclonal
Clone	3H2-E8
Preservative	0.05% Sodium Azide
Isotype	IgG1
Conjugate	Biotin
Purity	Protein G purified
Buffer	PBS

Product Description

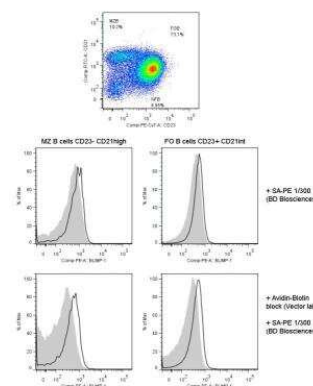
Host	Mouse
Gene ID	639
Gene Symbol	PRDM1
Species	Human, Mouse, Porcine
Reactivity Notes	Porcine usage reported in customer reviews
Marker	Plasma Cell Marker
Immunogen	A fragment of mouse Blimp-1 corresponding to residues 199-409. [UniProt# Q60636]

Product Application Details

Applications	Western Blot, ELISA, Flow Cytometry, Immunocytochemistry/Immunofluorescence, Immunohistochemistry, Immunohistochemistry-Frozen, Immunohistochemistry-Paraffin, Immunoprecipitation, Chromatin Immunoprecipitation (ChIP)
Recommended Dilutions	Western Blot, Flow Cytometry, ELISA, Immunohistochemistry, Immunocytochemistry/Immunofluorescence, Immunoprecipitation, Immunohistochemistry-Paraffin, Immunohistochemistry-Frozen, Chromatin Immunoprecipitation (ChIP)
Application Notes	Optimal dilution of this antibody should be experimentally determined.

Images

Flow Cytometry: BLIMP1/PRDM1 Antibody (3H2-E8) [Biotin] [NB600-235B] - Blimp-1 in mouse spleen. Image courtesy of product review by Branislav Krljanac.





Novus Biologicals USA

10730 E. Briarwood Avenue
Centennial, CO 80112
USA

Phone: 303.730.1950

Toll Free: 1.888.506.6887

Fax: 303.730.1966

nb-customerservice@bio-techne.com

Bio-Techne Canada

21 Canmotor Ave
Toronto, ON M8Z 4E6
Canada

Phone: 905.827.6400

Toll Free: 855.668.8722

Fax: 905.827.6402

canada.inquires@bio-techne.com

Bio-Techne Ltd

19 Barton Lane
Abingdon Science Park
Abingdon, OX14 3NB, United Kingdom

Phone: (44) (0) 1235 529449

Free Phone: 0800 37 34 15

Fax: (44) (0) 1235 533420

info.EMEA@bio-techne.com

General Contact Information

www.novusbio.com

Technical Support: nb-technical@bio-techne.com

Orders: nb-customerservice@bio-techne.com

General: novus@novusbio.com

Products Related to NB600-235B

NBP2-29370	Streptavidin Native Protein
NBL1-14733	BLIMP1/PRDM1 Overexpression Lysate
NBP1-96888	Mouse IgG1 Isotype Control (MG1) [Biotin]
NB600-235R	BLIMP1/PRDM1 Antibody (3H2-E8) [DyLight 550]

Limitations

This product is for research use only and is not approved for use in humans or in clinical diagnosis. Primary Antibodies are guaranteed for 1 year from date of receipt.

For more information on our 100% guarantee, please visit www.novusbio.com/guarantee

Earn gift cards/discounts by submitting a review: www.novusbio.com/reviews/submit/NB600-235B

Earn gift cards/discounts by submitting a publication using this product:
www.novusbio.com/publications

