

Product Datasheet

Insulin Antibody (K36aC10) NB600-1488

Unit Size: 0.1 ml

Store at 4C short term. Aliquot and store at -20C long term. Avoid freeze-thaw cycles.

www.novusbio.com



technical@novusbio.com

Protocols, Publications, Related Products, Reviews, Research Tools and Images at:
www.novusbio.com/NB600-1488

Updated 5/23/2024 v.20.1

Earn rewards for product
reviews and publications.

Submit a publication at www.novusbio.com/publications

Submit a review at www.novusbio.com/reviews/destination/NB600-1488



NB600-1488

Insulin Antibody (K36aC10)

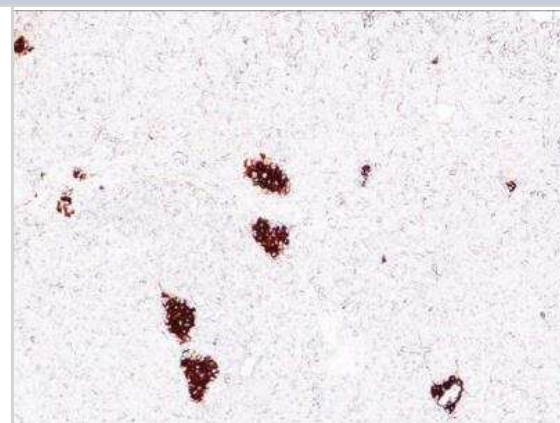
Product Information	
Unit Size	0.1 ml
Concentration	This product is unpurified. The exact concentration of antibody is not quantifiable.
Storage	Store at 4C short term. Aliquot and store at -20C long term. Avoid freeze-thaw cycles.
Clonality	Monoclonal
Clone	K36aC10
Preservative	0.9% Sodium Azide
Isotype	IgG1
Purity	Unpurified
Buffer	Ascites

Product Description	
Host	Mouse
Gene ID	3630
Gene Symbol	INS
Species	Human, Rat, Porcine, Bovine, Canine, Equine, Feline, Guinea Pig, Primate, Rabbit, Sheep
Specificity/Sensitivity	NB600-1488 reacts specifically against insulin. However, it also exhibits cross-reactivity with human proinsulin. This antibody binds to insulin with an affinity constant of $8.8 \times 10^9 \text{ M}^{-1}$ in RIA.
Immunogen	Human insulin.

Product Application Details	
Applications	Dot Blot, Immunocytochemistry/ Immunofluorescence, Immunohistochemistry, Immunohistochemistry-Paraffin, Radioimmunoassay
Recommended Dilutions	Immunohistochemistry 1:10-1:500, Immunocytochemistry/ Immunofluorescence 1:400, Immunohistochemistry-Paraffin 1:1000, Radioimmunoassay 1:100-1:2000, Dot Blot 1:100-1:2000
Application Notes	Binds to insulin with an affinity constant of $8.8 \times 10^9 \text{ M}^{-1}$ in RIA $^9 \text{ M}^{-1}$

Images

Immunohistochemistry-Paraffin: Insulin Antibody (K36aC10) [NB600-1488] - Human pancreas tissue sections stained at 1:1,000.





Novus Biologicals USA

10730 E. Briarwood Avenue
Centennial, CO 80112
USA
Phone: 303.730.1950
Toll Free: 1.888.506.6887
Fax: 303.730.1966
nb-customerservice@bio-techne.com

Bio-Techne Canada

21 Canmotor Ave
Toronto, ON M8Z 4E6
Canada
Phone: 905.827.6400
Toll Free: 855.668.8722
Fax: 905.827.6402
canada.inquires@bio-techne.com

Bio-Techne Ltd

19 Barton Lane
Abingdon Science Park
Abingdon, OX14 3NB, United Kingdom
Phone: (44) (0) 1235 529449
Free Phone: 0800 37 34 15
Fax: (44) (0) 1235 533420
info.EMEA@bio-techne.com

General Contact Information

www.novusbio.com
Technical Support: nb-technical@bio-
techne.com
Orders: nb-customerservice@bio-techne.com
General: novus@novusbio.com

Limitations

This product is for research use only and is not approved for use in humans or in clinical diagnosis. Primary Antibodies are guaranteed for 1 year from date of receipt.

For more information on our 100% guarantee, please visit www.novusbio.com/guarantee

Earn gift cards/discounts by submitting a review: www.novusbio.com/reviews/submit/NB600-1488

Earn gift cards/discounts by submitting a publication using this product:
www.novusbio.com/publications

