

Product Datasheet

MAP1B Antibody (AA6) NB600-1446

Unit Size: 0.1 ml

Store at -20C. Avoid freeze-thaw cycles.

www.novusbio.com



technical@novusbio.com

Reviews: 1 Publications: 1

Protocols, Publications, Related Products, Reviews, Research Tools and Images at:
www.novusbio.com/NB600-1446

Updated 7/28/2024 v.20.1

**Earn rewards for product
reviews and publications.**

Submit a publication at www.novusbio.com/publications

Submit a review at www.novusbio.com/reviews/destination/NB600-1446



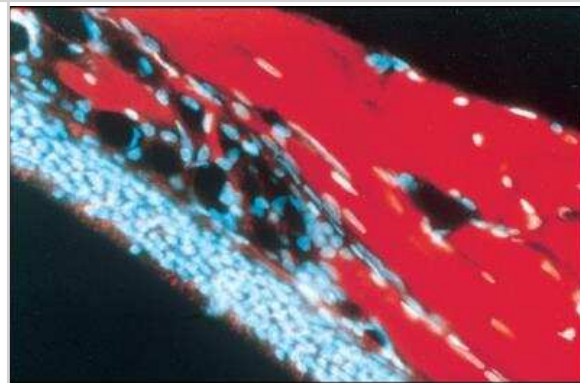
NB600-1446**MAP1B Antibody (AA6)**

| Product Information | |
|------------------------------------|--|
| Unit Size | 0.1 ml |
| Concentration | This product is unpurified. The exact concentration of antibody is not quantifiable. |
| Storage | Store at -20C. Avoid freeze-thaw cycles. |
| Clonality | Monoclonal |
| Clone | AA6 |
| Preservative | 0.9% Sodium Azide |
| Isotype | IgG1 |
| Purity | Unpurified |
| Buffer | Ascites |
| Target Molecular Weight | 271 kDa |
| Product Description | |
| Host | Mouse |
| Gene ID | 4131 |
| Gene Symbol | MAP1B |
| Species | Human, Mouse, Rat, Bovine, Chicken, Feline |
| Reactivity Notes | Cross-reacts with Human, Mouse, Rat, Cow, Cat and Chicken. May react with Hamster. Please note that this antibody is reactive to Mouse and derived from the same host, Mouse. Additional Mouse on Mouse blocking steps may be required for IHC and ICC experiments. Please contact Technical Support for more information. |
| Marker | Neuronal Marker |
| Specificity/Sensitivity | The antibody does not cross-react with other MAPs or tubulin. |
| Immunogen | Rat brain microtubule associated proteins. |
| Product Application Details | |
| Applications | Western Blot, Immunocytochemistry/ Immunofluorescence, Immunohistochemistry, Immunohistochemistry-Frozen, Microarray |
| Recommended Dilutions | Western Blot 1:500, Immunohistochemistry 1:10-1:500, Immunocytochemistry/ Immunofluorescence 1:10-1:500, Immunohistochemistry-Frozen 1:10-1:500, Microarray |

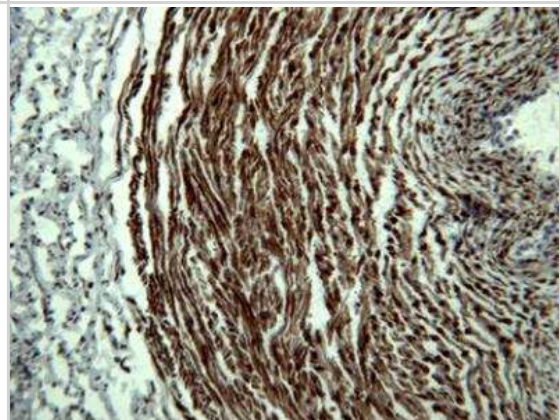


Images

Immunocytochemistry/Immunofluorescence: MAP1B Antibody (AA6) [NB600-1446] - Staining of polyester wax section through adult rat olfactory sensory epithelium using Monoclonal Anti-MAP1b, clone No. AA6 showing intense reactivity in the olfactory nerve (red). Cell nuclei fluoresce blue due to Hoechst counterstain.



Immunohistochemistry: MAP1B Antibody (AA6) [NB600-1446] - MAP1B expression on human umbilical cord stained with NB600-1446. Image generously provided by Dr. Yimin Wang, Tissue Regeneration Therapeutics Inc



Publications

Kaneko T, Arayatrakoollikit U, Yamanaka Y et al. Immunohistochemical and gene expression analysis of stem-cell-associated markers in rat dental pulp Cell Tissue Res 2012-12-21 [PMID: 23263462] (IF/IHC, Rat)

Procedures

Immunohistochemistry protocol for MAP1B Antibody (NB600-1446)

Immunohistochemistry Protocol for MAP1B Antibody (NB600-1446):

IHC protocol for cryostat sections (Protocol generously provided by Dr. Yimin Wang, Tissue Regeneration Therapeutics Inc)

1. Take out the cryostat section slides from -80C. Dry for few minutes at RT.
2. Rinse slides with PBS to get rid of OCT. 3 min x 2, shake
3. Fix slides with 1:1 methanol:acetone for 3 min
4. Wash slides with PBS, 3 min x 2
5. Circle tissue sections with PAP-Pen,
6. Incubation with Normal Horse Serum: 5% in 2%BSA (in PBS-Tween20) for 20 minutes.
7. MAP1B anti human antibody (1:200 in 2% BSA 0.1% Tween20). Incubate for 1.5 hours at 37C in a humid chamber.
8. Wash slides with PBS-Tween (0.1%), 5min x2

The following steps are for IHC only

9. Blocking of endogenous peroxidase: Incubation with 0.3% H₂O₂ for 10 minutes.
10. Wash PBS-Tween (0.1%), 3 min x 2
11. Incubation with secondary antibody (1:200 with PBS, anti mouse-bio, in AK-5002 kit) for 45 minutes at 37C in a humid chamber.
12. Wash slides with PBS-Tween (0.1%) 5min x2
13. Incubate with VECTAINABC reagent solution (bottle C, Cat No: PK6100, contains Avidin-HRP) for 30 minutes at RT in the dark.

(For solution C: 10ml PBS + 2 drops of A and 2 drops of B, kept in 4C with dark)

Prewarm at RT for 10min before use and drop 2 drops to the sections.

14. Wash slides with PBS-Tween (0.1%) 5min x2
15. Incubation with peroxidase substrate (Vector Nova Red, SK-4800) until desired stain intensity develops. Usually 1 to 2 minutes.

Prepare the substrate immediately before use: can be used for > 1week.

- Add 3 drops of Reagent 1 to 5 ml of DDW, mix well
- Add 2 drops of Reagent 2 and mix well
- Add 2 drops of Reagent 3 and mix well
- Add 2 drops of Hydrogen Peroxide Solution and mix well

16. Wash slides with tap water for 5 minutes.
17. Hematoxylin nuclear staining: (Filter solution when first use, HE staining Jar, 2nd one). Stain slides for 5 seconds at room temperature, then carefully rinse for 3 minutes under running cold tap water;
18. Mount the slide with cc mount (Sigma, C9368, 30ml)



Novus Biologicals USA

10730 E. Briarwood Avenue
Centennial, CO 80112
USA
Phone: 303.730.1950
Toll Free: 1.888.506.6887
Fax: 303.730.1966
nb-customerservice@bio-techne.com

Bio-Techne Canada

21 Canmotor Ave
Toronto, ON M8Z 4E6
Canada
Phone: 905.827.6400
Toll Free: 855.668.8722
Fax: 905.827.6402
canada.inquires@bio-techne.com

Bio-Techne Ltd

19 Barton Lane
Abingdon Science Park
Abingdon, OX14 3NB, United Kingdom
Phone: (44) (0) 1235 529449
Free Phone: 0800 37 34 15
Fax: (44) (0) 1235 533420
info.EMEA@bio-techne.com

General Contact Information

www.novusbio.com
Technical Support: nb-technical@bio-techne.com
Orders: nb-customerservice@bio-techne.com
General: novus@novusbio.com

Limitations

This product is for research use only and is not approved for use in humans or in clinical diagnosis. Primary Antibodies are guaranteed for 1 year from date of receipt.

For more information on our 100% guarantee, please visit www.novusbio.com/guarantee

Earn gift cards/discounts by submitting a review: www.novusbio.com/reviews/submit/NB600-1446

Earn gift cards/discounts by submitting a publication using this product:
www.novusbio.com/publications

