

Product Datasheet

TRF-1 Antibody NB600-1391

Unit Size: 0.1 mg

Store at 4C short term. Aliquot and store at -20C long term. Avoid freeze-thaw cycles.

www.novusbio.com



technical@novusbio.com

Publications: 2

Protocols, Publications, Related Products, Reviews, Research Tools and Images at:
www.novusbio.com/NB600-1391

Updated 10/29/2020 v.20.1

Earn rewards for product
reviews and publications.

Submit a publication at www.novusbio.com/publications

Submit a review at www.novusbio.com/reviews/destination/NB600-1391



NB600-1391**TRF-1 Antibody****Product Information**

Unit Size	0.1 mg
Concentration	0.5 mg/ml
Storage	Store at 4C short term. Aliquot and store at -20C long term. Avoid freeze-thaw cycles.
Clonality	Polyclonal
Preservative	0.05% Sodium Azide
Isotype	IgG
Purity	Protein G purified
Buffer	PBS with 0.05% BSA

Product Description

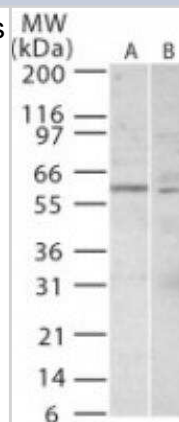
Host	Rabbit
Gene ID	7013
Gene Symbol	TERF1
Species	Human
Reactivity Notes	Cross-reacts with Human.
Marker	Telomere Marker
Immunogen	Synthetic peptides corresponding to amino acids 321-335 and 406-420 of human TRF1 were used as immunogen.

Product Application Details

Applications	Western Blot
Recommended Dilutions	Western Blot 4 - 6 ug/ml

Images

Western Blot: TRF-1 Antibody [NB600-1391] - Analysis of TRF1 in 20 ugs of A) Jurkat and B) 293 cell lysate using this antibody.



Publications

Nyborg AC, Jansen K, Ladd TB et al. A signal peptide peptidase (SPP) reporter activity assay based on the cleavage of type II membrane protein substrates provides further evidence for an inverted orientation of the SPP active site relative to presenilin. J Biol Chem. 2004-10-08 [PMID: 15252014]

Details:
Western Blot, Figs 1C, 2C, 2E, 3D: Analysis of a substrate consisting of the N-terminus of ATF6 fused to a transmembrane domain susceptible to SPP cleavage in vitro.

Nikitina T, Woodcock CL. Closed chromatin loops at the ends of chromosomes. J Cell Biol. 2004-07-19 [PMID: 15249582]





Novus Biologicals USA

10730 E. Briarwood Avenue
Centennial, CO 80112
USA
Phone: 303.730.1950
Toll Free: 1.888.506.6887
Fax: 303.730.1966
nb-customerservice@bio-techne.com

Bio-Techne Canada

21 Canmotor Ave
Toronto, ON M8Z 4E6
Canada
Phone: 905.827.6400
Toll Free: 855.668.8722
Fax: 905.827.6402
canada.inquires@bio-techne.com

Bio-Techne Ltd

19 Barton Lane
Abingdon Science Park
Abingdon, OX14 3NB, United Kingdom
Phone: (44) (0) 1235 529449
Free Phone: 0800 37 34 15
Fax: (44) (0) 1235 533420
info.EMEA@bio-techne.com

General Contact Information

www.novusbio.com
Technical Support: nb-technical@bio-techne.com
Orders: nb-customerservice@bio-techne.com
General: novus@novusbio.com

Limitations

This product is for research use only and is not approved for use in humans or in clinical diagnosis. Primary Antibodies are guaranteed for 1 year from date of receipt.

For more information on our 100% guarantee, please visit www.novusbio.com/guarantee

Earn gift cards/discounts by submitting a review: www.novusbio.com/reviews/submit/NB600-1391

Earn gift cards/discounts by submitting a publication using this product:
www.novusbio.com/publications

