

# Product Datasheet

## Filamin Antibody (FLMN01 (PM6/317)) NB600-1218

Unit Size: 500 uL

Store at 4C. Do not freeze.

[www.novusbio.com](http://www.novusbio.com)



[technical@novusbio.com](mailto:technical@novusbio.com)

### Publications: 1

Protocols, Publications, Related Products, Reviews, Research Tools and Images at:  
[www.novusbio.com/NB600-1218](http://www.novusbio.com/NB600-1218)

Updated 12/21/2023 v.20.1

Earn rewards for product  
reviews and publications.

Submit a publication at [www.novusbio.com/publications](http://www.novusbio.com/publications)

Submit a review at [www.novusbio.com/reviews/destination/NB600-1218](http://www.novusbio.com/reviews/destination/NB600-1218)



**NB600-1218**

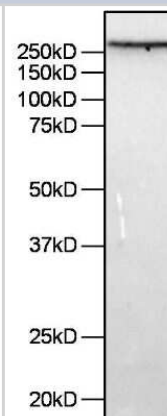
Filamin Antibody (FLMN01 (PM6/317))

Product Information	
Unit Size	500 uL
Concentration	0.2 mg/ml
Storage	Store at 4C. Do not freeze.
Clonality	Monoclonal
Clone	FLMN01 (PM6/317)
Preservative	0.09% Sodium Azide
Isotype	IgG1
Purity	Protein G purified
Buffer	PBS (pH 7.4) and 0.2% BSA
Product Description	
Host	Mouse
Gene ID	2318
Gene Symbol	FLNC
Species	Human, Mouse, Rat, Chicken, Guinea Pig, Rabbit
Reactivity Notes	Please note that this antibody is reactive to Mouse and derived from the same host, Mouse. Additional Mouse on Mouse blocking steps may be required for IHC and ICC experiments. Please contact Technical Support for more information.
Immunogen	Platelet filamin
Product Application Details	
Applications	Western Blot, ELISA, Immunohistochemistry, Immunohistochemistry-Paraffin
Recommended Dilutions	Western Blot 1:100 - 1:500, ELISA 1:100 - 1:2000, Immunohistochemistry 1 - 2 ug/ml, Immunohistochemistry-Paraffin 1 - 2 ug/ml

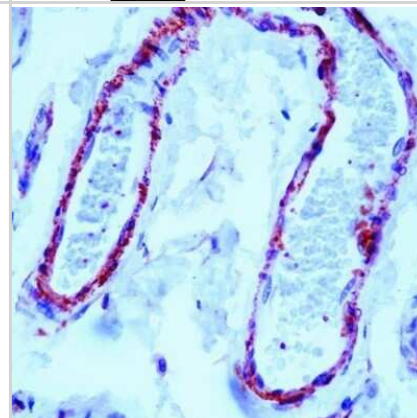


## Images

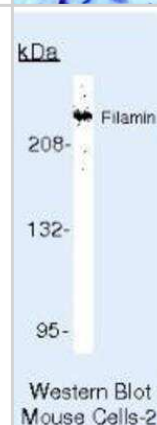
Western Blot: Filamin Antibody (FLMN01 (PM6/317)) [NB600-1218] - Analysis of 7.5ug of HeLa cell lysate per well.



Immunohistochemistry-Paraffin: Filamin Antibody (FLMN01 (PM6/317)) [NB600-1218] - Staining of human skin stained with Filamin antibody using peroxidase-conjugate and AEC chromogen. Note cytoplasmic staining of smooth muscle cells surrounding blood vessels.



Western Blot: Filamin Antibody (FLMN01 (PM6/317)) [NB600-1218] - Analysis of NIH3T3 Cells.



## Publications

Akcan M Defining the role of Xin and associated proteins in skeletal muscle health Thesis 1905-07-13 (WB, Mouse)



### **Novus Biologicals USA**

10730 E. Briarwood Avenue  
Centennial, CO 80112  
USA  
Phone: 303.730.1950  
Toll Free: 1.888.506.6887  
Fax: 303.730.1966  
nb-customerservice@bio-techne.com

### **Bio-Techne Canada**

21 Canmotor Ave  
Toronto, ON M8Z 4E6  
Canada  
Phone: 905.827.6400  
Toll Free: 855.668.8722  
Fax: 905.827.6402  
canada.inquires@bio-techne.com

### **Bio-Techne Ltd**

19 Barton Lane  
Abingdon Science Park  
Abingdon, OX14 3NB, United Kingdom  
Phone: (44) (0) 1235 529449  
Free Phone: 0800 37 34 15  
Fax: (44) (0) 1235 533420  
info.EMEA@bio-techne.com

### **General Contact Information**

[www.novusbio.com](http://www.novusbio.com)  
Technical Support: [nb-technical@bio-techne.com](mailto:nb-technical@bio-techne.com)  
Orders: [nb-customerservice@bio-techne.com](mailto:nb-customerservice@bio-techne.com)  
General: [novus@novusbio.com](mailto:novus@novusbio.com)

### **Limitations**

This product is for research use only and is not approved for use in humans or in clinical diagnosis. Primary Antibodies are guaranteed for 1 year from date of receipt.

For more information on our 100% guarantee, please visit [www.novusbio.com/guarantee](http://www.novusbio.com/guarantee)

Earn gift cards/discounts by submitting a review: [www.novusbio.com/reviews/submit/NB600-1218](http://www.novusbio.com/reviews/submit/NB600-1218)

Earn gift cards/discounts by submitting a publication using this product:  
[www.novusbio.com/publications](http://www.novusbio.com/publications)

