

Product Datasheet

NPM1 Antibody (FC82291)

NB600-1030

Unit Size: 0.1 ml

Store at -20C. Avoid freeze-thaw cycles.

www.novusbio.com



technical@novusbio.com

Publications: 4

Protocols, Publications, Related Products, Reviews, Research Tools and Images at:
www.novusbio.com/NB600-1030

Updated 6/25/2024 v.20.1

Earn rewards for product
reviews and publications.

Submit a publication at www.novusbio.com/publications

Submit a review at www.novusbio.com/reviews/destination/NB600-1030



NB600-1030

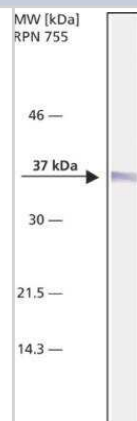
NPM1 Antibody (FC82291)

Product Information	
Unit Size	0.1 ml
Concentration	0.5 mg/ml
Storage	Store at -20C. Avoid freeze-thaw cycles.
Clonality	Monoclonal
Clone	FC82291
Preservative	0.9% Sodium Azide
Isotype	IgG1
Purity	Protein A or G purified
Buffer	10mM PBS (pH 7.4) and 1.0% BSA
Product Description	
Host	Mouse
Gene ID	4869
Gene Symbol	NPM1
Species	Human, Mouse, Rat, Bovine, Canine, Donkey, Hamster, Monkey
Reactivity Notes	kangaroo rat. Please note that this antibody is reactive to Mouse and derived from the same host, Mouse. Additional Mouse on Mouse blocking steps may be required for IHC and ICC experiments. Please contact Technical Support for more information.
Specificity/Sensitivity	Detects both the phosphorylated and the unphosphorylated B23 molecule.
Immunogen	rat B23 (nucleophosmin, NPM, numatrin). UniProt accession no. P06748.
Product Application Details	
Applications	Western Blot, ELISA, Immunoblotting, Immunocytochemistry/ Immunofluorescence
Recommended Dilutions	Western Blot 2-4 ug/ml, ELISA, Immunocytochemistry/ Immunofluorescence, Immunoblotting 0.5ug/ml
Application Notes	WB: Detects a band of approximately 37 kDa. Optimal dilutions/concentrations should be determined by the end user.

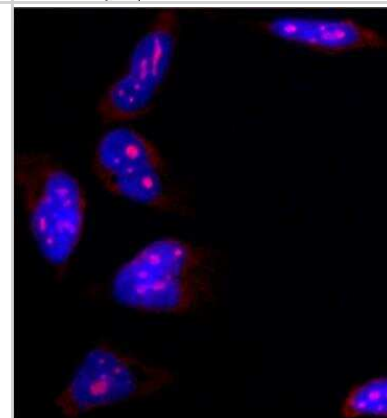


Images

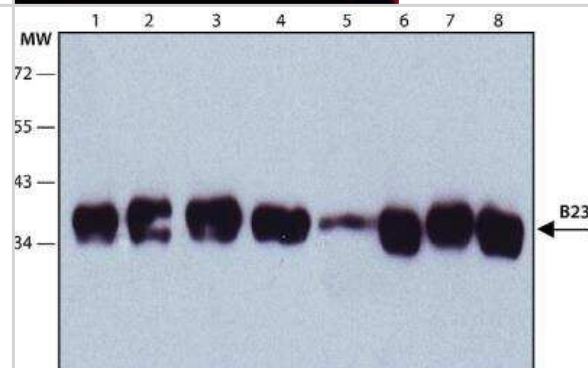
Western Blot: Nucleophosmin Antibody (FC82291) [NB600-1030] - Monoclonal Anti-B23 antibody produced in mouse



Immunofluorescence: NPM1 Antibody (FC82291) [NB600-1030] - HeLa cells were fixed and permeabilized with methanol followed by methanol:acetone. Fixed cells were stained with 1:500. Cells were counterstained with DAPI (blue) to stain nuclei.



Immunoblotting: NPM1 Antibody (FC82291) [NB600-1030] - Cell line lysates were separated on SDS-PAGE and probed with 0.5 ug/mL Monoclonal Anti-B23 Clone: FC82291 Lanes 1. HeLa 2. JURKAT 3. COS7 4. NIH-3T3 5. RAT2 6. CHO 7. MDBK 8. MDCK



Publications

Wang XQD, Fan D, Han Q et al. Mutant NPM1 Hijacks Transcriptional Hubs to Maintain Pathogenic Gene Programs in Acute Myeloid Leukemia Cancer discovery 2023-03-01 [PMID: 36455589] (ICC/IF)

Details:
Cut & Run

Schueder F, Rivera-Molina F, Su M et al. Unraveling cellular complexity with unlimited multiplexed super-resolution imaging bioRxiv 2023-05-18

Luo H, Zhu G, Eshelman MA et al. HOTTIP-dependent R-loop formation regulates CTCF boundary activity and TAD integrity in leukemia Molecular cell 2022-02-17 [PMID: 35180428]

IbANEZ-CABELLOS JS, Seco-Cervera M, Picher-Latorre C et al. Acute depletion of telomerase components DKC1 and NOP10 induces oxidative stress and disrupts ribosomal biogenesis via NPM1 and activation of the P53 pathway Biochimica et biophysica acta. Molecular cell research 2020-12-01 [PMID: 32910990] (ICC/IF, Human)



Novus Biologicals USA

10730 E. Briarwood Avenue
Centennial, CO 80112
USA
Phone: 303.730.1950
Toll Free: 1.888.506.6887
Fax: 303.730.1966
nb-customerservice@bio-techne.com

Bio-Techne Canada

21 Canmotor Ave
Toronto, ON M8Z 4E6
Canada
Phone: 905.827.6400
Toll Free: 855.668.8722
Fax: 905.827.6402
canada.inquires@bio-techne.com

Bio-Techne Ltd

19 Barton Lane
Abingdon Science Park
Abingdon, OX14 3NB, United Kingdom
Phone: (44) (0) 1235 529449
Free Phone: 0800 37 34 15
Fax: (44) (0) 1235 533420
info.EMEA@bio-techne.com

General Contact Information

www.novusbio.com
Technical Support: nb-technical@bio-techne.com
Orders: nb-customerservice@bio-techne.com
General: novus@novusbio.com

Products Related to NB600-1030

NBL1-13748	NPM1 Overexpression Lysate
HAF007	Goat anti-Mouse IgG Secondary Antibody [HRP]
NB720-B	Rabbit anti-Mouse IgG (H+L) Secondary Antibody [Biotin]
NBP1-97005-0.5mg	Mouse IgG1 Isotype Control (MG1)

Limitations

This product is for research use only and is not approved for use in humans or in clinical diagnosis. Primary Antibodies are guaranteed for 1 year from date of receipt.

For more information on our 100% guarantee, please visit www.novusbio.com/guarantee

Earn gift cards/discounts by submitting a review: www.novusbio.com/reviews/submit/NB600-1030

Earn gift cards/discounts by submitting a publication using this product:
www.novusbio.com/publications

