

Product Datasheet

Vimentin Antibody (VI-RE/1) - BSA Free NB500-512

Unit Size: 0.1 mg

Store at 4C. Do not freeze.

www.novusbio.com



technical@novusbio.com

Protocols, Publications, Related Products, Reviews, Research Tools and Images at:
www.novusbio.com/NB500-512

Updated 7/28/2024 v.20.1

Earn rewards for product
reviews and publications.

Submit a publication at www.novusbio.com/publications

Submit a review at www.novusbio.com/reviews/destination/NB500-512



NB500-512

Vimentin Antibody (VI-RE/1) - BSA Free

| Product Information | |
|--------------------------------|-----------------------------|
| Unit Size | 0.1 mg |
| Concentration | 1.0 mg/ml |
| Storage | Store at 4C. Do not freeze. |
| Clonality | Monoclonal |
| Clone | VI-RE/1 |
| Preservative | 0.9% Sodium Azide |
| Isotype | IgG1 |
| Purity | Protein A purified |
| Buffer | PBS (pH 7.4) |
| Target Molecular Weight | 53.6 kDa |

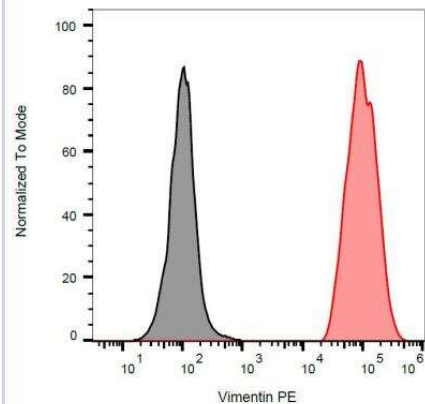
| Product Description | |
|--------------------------------|---|
| Host | Mouse |
| Gene ID | 7431 |
| Gene Symbol | VIM |
| Species | Human, Mouse (Negative), Porcine (Negative) |
| Marker | Mesenchymal Cells Marker |
| Specificity/Sensitivity | The antibody VI-RE/1 reacts with human vimentin, a 57 kDa intermediate filament protein expressed on a wide variety of mesenchymal and mesodermal cell types. |
| Immunogen | Bacterially expressed full-length human Vimentin Antibody |

| Product Application Details | |
|------------------------------------|--|
| Applications | Western Blot, ELISA, Flow Cytometry, Flow (Intracellular), Immunocytochemistry/ Immunofluorescence, Immunohistochemistry-Paraffin, CyTOF-ready |
| Recommended Dilutions | Western Blot 1-2 ug/ml, Flow Cytometry 1-4 ug/ml, ELISA 1:2000, Immunocytochemistry/ Immunofluorescence 5-10 ug/ml, Immunohistochemistry-Paraffin, Flow (Intracellular) 1-4 ug/ml, CyTOF-ready |
| Application Notes | ELISA: The antibody VI-RE/1 recognizes different epitope on human vimentin than the antibody VI-01 (IgM). This antibody is CyTOF ready. |

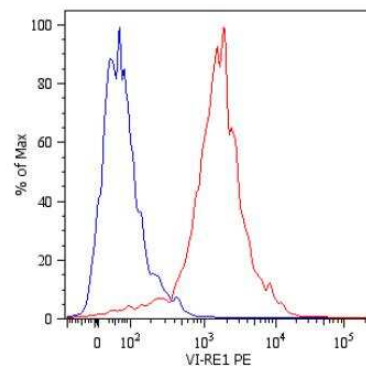


Images

Flow Cytometry: Vimentin Antibody (VI-RE/1) [NB500-512] - Analysis of vimentin expression in ESS-1 cells using anti-human vimentin (VI-RE/1) APC.



Flow Cytometry: Vimentin Antibody (VI-RE/1) [NB500-512] - Analysis of vimentin expression in LEP-19 human fibroblast cell line using anti-human vimentin (VI-RE/1) PE.





Novus Biologicals USA

10730 E. Briarwood Avenue
Centennial, CO 80112
USA
Phone: 303.730.1950
Toll Free: 1.888.506.6887
Fax: 303.730.1966
nb-customerservice@bio-techne.com

Bio-Techne Canada

21 Canmotor Ave
Toronto, ON M8Z 4E6
Canada
Phone: 905.827.6400
Toll Free: 855.668.8722
Fax: 905.827.6402
canada.inquires@bio-techne.com

Bio-Techne Ltd

19 Barton Lane
Abingdon Science Park
Abingdon, OX14 3NB, United Kingdom
Phone: (44) (0) 1235 529449
Free Phone: 0800 37 34 15
Fax: (44) (0) 1235 533420
info.EMEA@bio-techne.com

General Contact Information

www.novusbio.com
Technical Support: nb-technical@bio-
techne.com
Orders: nb-customerservice@bio-techne.com
General: novus@novusbio.com

Limitations

This product is for research use only and is not approved for use in humans or in clinical diagnosis. Primary Antibodies are guaranteed for 1 year from date of receipt.

For more information on our 100% guarantee, please visit www.novusbio.com/guarantee

Earn gift cards/discounts by submitting a review: www.novusbio.com/reviews/submit/NB500-512

Earn gift cards/discounts by submitting a publication using this product:
www.novusbio.com/publications

