

# Product Datasheet

## Cytokeratin 7/17 Antibody (C-46) - BSA Free NB500-352

Unit Size: 0.1 mg

Store at 4C. Do not freeze.

[www.novusbio.com](http://www.novusbio.com)



[technical@novusbio.com](mailto:technical@novusbio.com)

### Publications: 1

Protocols, Publications, Related Products, Reviews, Research Tools and Images at:  
[www.novusbio.com/NB500-352](http://www.novusbio.com/NB500-352)

Updated 10/23/2024 v.20.1

Earn rewards for product  
reviews and publications.

Submit a publication at [www.novusbio.com/publications](http://www.novusbio.com/publications)

Submit a review at [www.novusbio.com/reviews/destination/NB500-352](http://www.novusbio.com/reviews/destination/NB500-352)



**NB500-352**

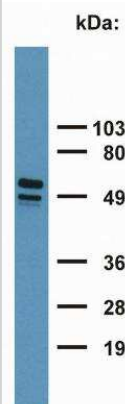
Cytokeratin 7/17 Antibody (C-46) - BSA Free

Product Information	
Unit Size	0.1 mg
Concentration	1.0 mg/ml
Storage	Store at 4C. Do not freeze.
Clonality	Monoclonal
Clone	C-46
Preservative	0.9% Sodium Azide
Isotype	IgG1
Purity	Protein A purified
Buffer	PBS (pH 7.4)
Target Molecular Weight	46 kDa
Product Description	
Host	Mouse
Gene ID	3855
Gene Symbol	KRT7
Species	Human, Porcine, Bovine, Mouse (Negative), Rabbit (Negative), Rat (Negative)
Specificity/Sensitivity	The antibody C-46 reacts with Cytokeratin peptides 7 and 17 (54 and 46 kDa). Cytokeratins are a member of intermediate filaments subfamily represented in epithelial tissues.
Immunogen	Cytoskeleton preparation of HeLa human cervix carcinoma cell line.
Product Application Details	
Applications	Western Blot, Flow Cytometry, Flow (Intracellular), Immunocytochemistry/ Immunofluorescence, Immunohistochemistry, Immunohistochemistry-Paraffin, Immunoprecipitation, CyTOF-ready
Recommended Dilutions	Western Blot 1-2 ug/ml, Flow Cytometry 1-2 ug/mL, Immunohistochemistry 1:10-1:500, Immunocytochemistry/ Immunofluorescence 1:10-1:500, Immunoprecipitation 1:50, Immunohistochemistry-Paraffin 10 ug/ml, Flow (Intracellular), CyTOF-ready
Application Notes	Western Blot - Sample preparation: Lysis 1% lauryl maltoside for 1 hour, 5x10 sec. sonication; 5 min. in hot Laemmli buffer (reducing conditions.) Immunohistochemistry-Paraffin sections - Pretreatment: 0,1% pepsin, 30 min, 37C Incubation: 4C overnight Application note: chromogen DAB. This antibody is CyTOF ready.

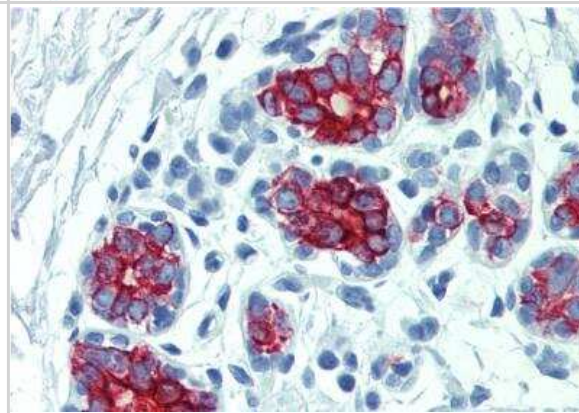


## Images

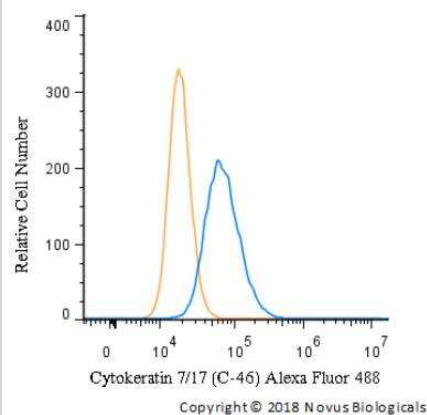
Western Blot: Cytokeratin 7/17 Antibody (C-46) [NB500-352] - Detection of Cytokeratin 7+17 in HeLa cell lysate with monoclonal antibody C-46.



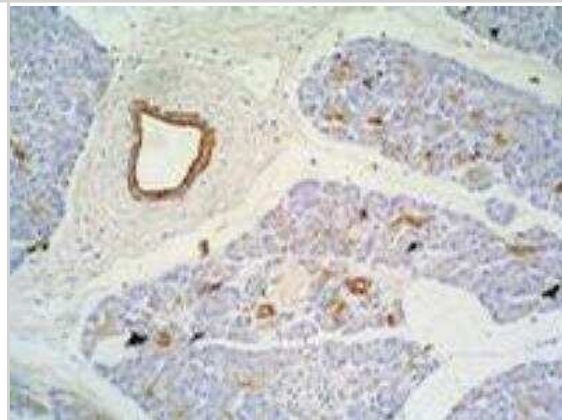
Immunohistochemistry-Paraffin: Cytokeratin 7/17 Antibody (C-46) [NB500-352] - Staining of human breast (paraffin-embedded sections) with anti-cytokeratin 7+17 (C-46).



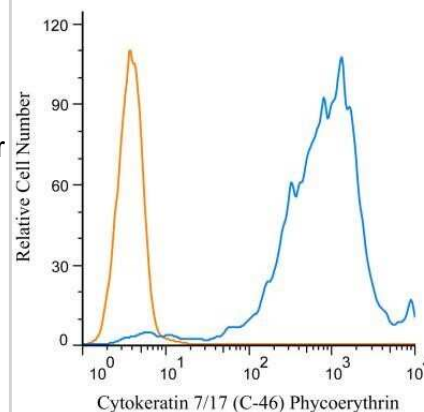
Flow (Intracellular): Cytokeratin 7/17 Antibody (C-46) [NB500-352] - An intracellular stain was performed on HeLa cells with Cytokeratin 7/17 (C-46) antibody NB500-352AF488 (blue) and a matched isotype control (orange). Cells were fixed with 4% PFA and then permeabilized with 0.1% saponin. Cells were incubated in an antibody dilution of 5 ug/mL for 30 minutes at room temperature. Both antibodies were conjugated to Alexa Fluor 488.



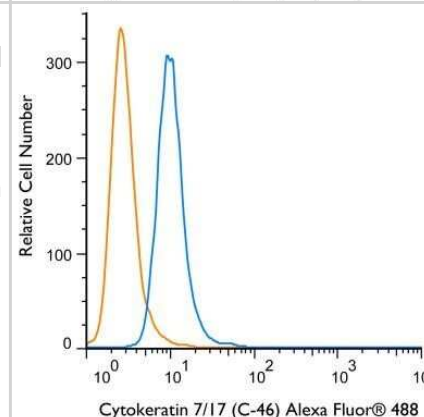
Immunohistochemistry: Cytokeratin 7/17 Antibody (C-46) [NB500-352] - Fig. 1. Immunohistochemistry staining of pancreas (paraffin-embedded sections) with anti-Cytokeratin 7/17 Antibody (C-46).



Flow Cytometry: Cytokeratin 7/17 Antibody (C-46) [NB500-352] - An intracellular stain was performed on HeLa cells with Cytokeratin 7/17 antibody (C-46) NB500-352PE (blue) and a matched isotype control (orange). Cells were fixed with 4% PFA and then permeabilized with 0.1% saponin. Cells were incubated in an antibody dilution of 1 ug/mL for 30 minutes at room temperature. Both antibodies were conjugated to Phycoerythrin.



Flow Cytometry: Cytokeratin 7/17 Antibody (C-46) [NB500-352] - Using the Alexa Fluor 488 direct conjugate An intracellular stain was performed on A549 cells with Cytokeratin 7/17 (C-46) antibody NB500-352AF488 (blue) and a matched isotype control (orange). Cells were fixed with 4% PFA and then permeabilized with 0.1% saponin. Cells were incubated in an antibody dilution of 5 ug/mL for 30 minutes at room temperature. Both antibodies were conjugated to Alexa Fluor 488.



## Publications

Cheng, K S, Pan, R Et al. ALICE: a hybrid AI paradigm with enhanced connectivity and cybersecurity for a serendipitous encounter with circulating hybrid cells. Theranostics 2020-10-13 [PMID: 33042268] (IF/IHC, Human)



### **Novus Biologicals USA**

10730 E. Briarwood Avenue  
Centennial, CO 80112  
USA  
Phone: 303.730.1950  
Toll Free: 1.888.506.6887  
Fax: 303.730.1966  
nb-customerservice@bio-techne.com

### **Bio-Techne Canada**

21 Canmotor Ave  
Toronto, ON M8Z 4E6  
Canada  
Phone: 905.827.6400  
Toll Free: 855.668.8722  
Fax: 905.827.6402  
canada.inquires@bio-techne.com

### **Bio-Techne Ltd**

19 Barton Lane  
Abingdon Science Park  
Abingdon, OX14 3NB, United Kingdom  
Phone: (44) (0) 1235 529449  
Free Phone: 0800 37 34 15  
Fax: (44) (0) 1235 533420  
info.EMEA@bio-techne.com

### **General Contact Information**

www.novusbio.com  
Technical Support: nb-technical@bio-techne.com  
Orders: nb-customerservice@bio-techne.com  
General: novus@novusbio.com

### **Products Related to NB500-352**

HAF007	Goat anti-Mouse IgG Secondary Antibody [HRP]
NB720-B	Rabbit anti-Mouse IgG (H+L) Secondary Antibody [Biotin]
NBP1-97005-0.5mg	Mouse IgG1 Isotype Control (MG1)
NB500-352PE	Cytokeratin 7/17 Antibody (C-46) [PE]

### **Limitations**

This product is for research use only and is not approved for use in humans or in clinical diagnosis. Primary Antibodies are guaranteed for 1 year from date of receipt.

For more information on our 100% guarantee, please visit [www.novusbio.com/guarantee](http://www.novusbio.com/guarantee)

Earn gift cards/discounts by submitting a review: [www.novusbio.com/reviews/submit/NB500-352](http://www.novusbio.com/reviews/submit/NB500-352)

Earn gift cards/discounts by submitting a publication using this product:  
[www.novusbio.com/publications](http://www.novusbio.com/publications)

