

Product Datasheet

MHC Class I Antibody (MEM-E/06) [PE] NB500-307PE

Unit Size: 0.1 ml

Store at 4C in the dark.

www.novusbio.com



technical@novusbio.com

Protocols, Publications, Related Products, Reviews, Research Tools and Images at:
www.novusbio.com/NB500-307PE

Updated 10/23/2024 v.20.1

Earn rewards for product
reviews and publications.

Submit a publication at www.novusbio.com/publications

Submit a review at www.novusbio.com/reviews/destination/NB500-307PE



NB500-307PE

MHC Class I Antibody (MEM-E/06) [PE]

Product Information

Unit Size	0.1 ml
Concentration	Please see the vial label for concentration. If unlisted please contact technical services.
Storage	Store at 4C in the dark.
Clonality	Monoclonal
Clone	MEM-E/06
Preservative	0.05% Sodium Azide
Isotype	IgG1
Conjugate	PE
Purity	Protein A purified
Buffer	PBS

Product Description

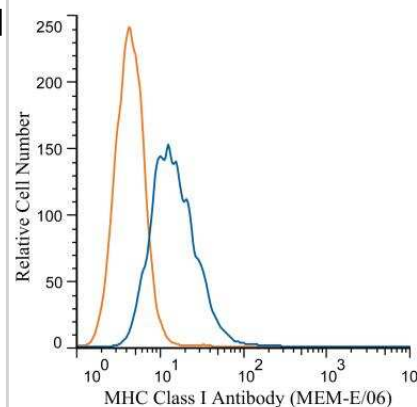
Host	Mouse
Gene ID	3133
Gene Symbol	HLA-E
Species	Human, Primate
Specificity/Sensitivity	This antibody (clone MEM-E/06) recognized native surface-expressed HLA-E, but not denaturated heavy chain of HLA-E. HLA-E belongs to the MHC Class I molecules (MHC Class Ib; nonclassical) and it is expressed on many types of the human cells. Some resultss showed that this antibody cross-reacts with some classical MHC Class I molecules (HLA-A3, -A11, -B7). However, others have confirmed that this antibody exhibits much broader cross-reactivity classical MHC Class I antigens, namely with HLA-A24, -A32, -B8, -B15, -B27, -B35, -B44, -B54, -C3, -C4, -C5, -C7.
Immunogen	Bacterially expressed recombinant full length protein refolded with beta2-microglobulin and peptide (Human).

Product Application Details

Applications	Flow Cytometry, Immunohistochemistry, Immunohistochemistry-Paraffin, Immunoprecipitation, CyTOF-ready
Recommended Dilutions	Flow Cytometry, Immunohistochemistry, Immunoprecipitation, Immunohistochemistry-Paraffin, CyTOF-ready

Images

Flow Cytometry: MHC Class I Antibody (MEM-E/06) [PE] [NB500-307PE]
 - A cell surface stain was performed on THP-1 cells with MHC Class I antibody (MEM-E/06) NB500-307 (blue) and a matched isotype control NBP2-27287 (orange). Cells were incubated in an antibody dilution of 1:100 for 20 minutes at room temperature. Both antibodies were conjugated to PE.





Novus Biologicals USA

10730 E. Briarwood Avenue
Centennial, CO 80112
USA

Phone: 303.730.1950

Toll Free: 1.888.506.6887

Fax: 303.730.1966

nb-customerservice@bio-techne.com

Bio-Techne Canada

21 Canmotor Ave
Toronto, ON M8Z 4E6
Canada

Phone: 905.827.6400

Toll Free: 855.668.8722

Fax: 905.827.6402

canada.inquires@bio-techne.com

Bio-Techne Ltd

19 Barton Lane
Abingdon Science Park
Abingdon, OX14 3NB, United Kingdom

Phone: (44) (0) 1235 529449

Free Phone: 0800 37 34 15

Fax: (44) (0) 1235 533420

info.EMEA@bio-techne.com

General Contact Information

www.novusbio.com

Technical Support: nb-technical@bio-techne.com

Orders: nb-customerservice@bio-techne.com

General: novus@novusbio.com

Products Related to NB500-307PE

NBP1-97005PE	Mouse IgG1 Isotype Control (MG1) [PE]
NB500-307UV	MHC Class I Antibody (MEM-E/06) [DyLight 350]
210-TA-005	TNF-alpha [Unconjugated]
H00003133-T01	MHC Class I 293T Cell Transient Overexpression Lysate

Limitations

This product is for research use only and is not approved for use in humans or in clinical diagnosis. Primary Antibodies are guaranteed for 1 year from date of receipt.

For more information on our 100% guarantee, please visit www.novusbio.com/guarantee

Earn gift cards/discounts by submitting a review: www.novusbio.com/reviews/submit/NB500-307PE

Earn gift cards/discounts by submitting a publication using this product:
www.novusbio.com/publications

