

# Product Datasheet

## PUMA Antibody - BSA Free

### NB500-261SS

Unit Size: 0.025 ml

Store at 4C short term. Aliquot and store at -20C long term. Avoid freeze-thaw cycles.

[www.novusbio.com](http://www.novusbio.com)



[technical@novusbio.com](mailto:technical@novusbio.com)

#### Publications: 2

Protocols, Publications, Related Products, Reviews, Research Tools and Images at:  
[www.novusbio.com/NB500-261](http://www.novusbio.com/NB500-261)

Updated 2/21/2025 v.20.1

Earn rewards for product  
reviews and publications.

Submit a publication at [www.novusbio.com/publications](http://www.novusbio.com/publications)

Submit a review at [www.novusbio.com/reviews/destination/NB500-261](http://www.novusbio.com/reviews/destination/NB500-261)



**NB500-261SS**

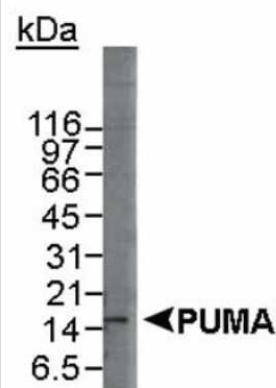
PUMA Antibody - BSA Free

Product Information	
Unit Size	0.025 ml
Concentration	5.65 mg/ml
Storage	Store at 4C short term. Aliquot and store at -20C long term. Avoid freeze-thaw cycles.
Clonality	Polyclonal
Preservative	0.05% Sodium Azide
Isotype	IgG
Purity	Immunogen affinity purified
Buffer	Tris-Glycine and 0.15M NaCl
Target Molecular Weight	16 kDa
Product Description	
Host	Rabbit
Gene ID	27113
Gene Symbol	BBC3
Species	Human
Immunogen	A synthetic peptide made to a region within the C-terminus of the human PUMA protein sequence (between residues 150-193). [UniProt# Q9BXH1]
Product Application Details	
Applications	Western Blot, Immunocytochemistry/ Immunofluorescence
Recommended Dilutions	Western Blot 2-4 ug/ml, Immunocytochemistry/ Immunofluorescence 1:20-1:100
Application Notes	This PUMA antibody is useful for Western blot and Immunocytochemistry/Immunofluorescence. By WB a band at ~16 kDa is seen, representing the beta form of PUMA. Reactivity against the alpha form of PUMA is unknown. The observed molecular weight of the protein may vary from the listed predicted molecular weight due to post translational modifications, post translation cleavages, relative charges, and other experimental factors.

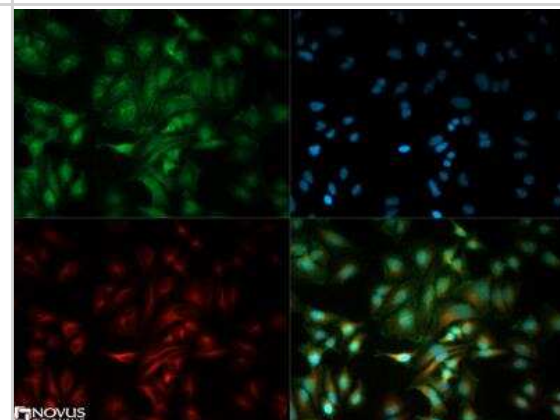


## Images

Western Blot: PUMA Antibody [NB500-261] - Detection of the beta isoform of PUMA in HL-60 whole cell lysate using NB 500-261 (4 ug/ml). ECL detection at a 30 minute exposure.



Immunocytochemistry/Immunofluorescence: PUMA Antibody [NB500-261] - The PUMA antibody was tested at a 1:20 dilution in HeLa cells against Dylight 488 (Green). Alpha-tubulin and nuclei were counterstained against Dylight 550 (Red) and DAPI (Blue).



## Publications

Haider, N, Dutt, P Et al. NEK10 tyrosine phosphorylates p53 and controls its transcriptional activity. *Oncogene* 2020-07-01 [PMID: 32561851] (IF/IHC, Human)

Stylianou S, Clarke RB, Brennan K et al. Aberrant activation of notch signaling in human breast cancer. *Cancer Res* 2006-02-01 [PMID: 16452208] (WB, Human)

## Procedures

### Serum protocol for PUMA Antibody (NB500-261)

PUMA Antibody:

Western Blot Protocol

1. Perform SDS-PAGE (4-12%) on samples to be analyzed, loading 35 ug of total protein per lane.
2. Transfer proteins to Nitrocellulose according to the instructions provided by the manufacturer of the transfer apparatus.
3. Stain the blot using ponceau S for 1-2 minutes to access the transfer of proteins onto the nitrocellulose membrane. Rinse the blot in water to remove excess stain and mark the lane locations and locations of molecular weight markers using a pencil.
4. Rinse the blot in TBS for approximately 5 minutes.
5. Block the membrane using 5% non-fat dry milk + 0.5% BSA in TBS for 1 hour.
6. Dilute the rabbit anti-PUMA primary antibody (NB 500-261) in blocking buffer and incubate 2 hours at room temperature.
7. Wash the membrane in water for 5 minutes and apply the diluted rabbit-IgG HRP-conjugated secondary antibody in blocking buffer (as per manufacturer's instructions) and incubate 1 hour at room temperature.
8. Wash the blot in TBS containing 0.05-0.1% Tween-20 for 10-20 minutes.
9. Wash the blot in type I water for an additional 10-20 minutes (this step can be repeated as required to reduce background).
10. Apply the detection reagent of choice in accordance with the manufacturer's instructions (Amersham's ECL is the standard reagent used at Novus Biologicals).

Note: Tween-20 can be added to the blocking buffer at a final concentration of 0.05-0.2%, provided it does not interfere with antibody-antigen binding.





### **Novus Biologicals USA**

10730 E. Briarwood Avenue  
Centennial, CO 80112  
USA  
Phone: 303.730.1950  
Toll Free: 1.888.506.6887  
Fax: 303.730.1966  
nb-customerservice@bio-techne.com

### **Bio-Techne Canada**

21 Canmotor Ave  
Toronto, ON M8Z 4E6  
Canada  
Phone: 905.827.6400  
Toll Free: 855.668.8722  
Fax: 905.827.6402  
canada.inquires@bio-techne.com

### **Bio-Techne Ltd**

19 Barton Lane  
Abingdon Science Park  
Abingdon, OX14 3NB, United Kingdom  
Phone: (44) (0) 1235 529449  
Free Phone: 0800 37 34 15  
Fax: (44) (0) 1235 533420  
info.EMEA@bio-techne.com

### **General Contact Information**

[www.novusbio.com](http://www.novusbio.com)  
Technical Support: nb-technical@bio-techne.com  
Orders: nb-customerservice@bio-techne.com  
General: novus@novusbio.com

### **Limitations**

This product is for research use only and is not approved for use in humans or in clinical diagnosis. Primary Antibodies are guaranteed for 1 year from date of receipt.

For more information on our 100% guarantee, please visit [www.novusbio.com/guarantee](http://www.novusbio.com/guarantee)

Earn gift cards/discounts by submitting a review: [www.novusbio.com/reviews/submit/NB500-261](http://www.novusbio.com/reviews/submit/NB500-261)

Earn gift cards/discounts by submitting a publication using this product:  
[www.novusbio.com/publications](http://www.novusbio.com/publications)

