

Product Datasheet

actin-related protein 2/3 complex subunit 1B Antibody NB300-898

Unit Size: 0.1 mg

Store at -20C. Avoid freeze-thaw cycles.

www.novusbio.com



technical@novusbio.com

Publications: 3

Protocols, Publications, Related Products, Reviews, Research Tools and Images at:
www.novusbio.com/NB300-898

Updated 10/23/2024 v.20.1

Earn rewards for product
reviews and publications.

Submit a publication at www.novusbio.com/publications

Submit a review at www.novusbio.com/reviews/destination/NB300-898



NB300-898

actin-related protein 2/3 complex subunit 1B Antibody

Product Information	
Unit Size	0.1 mg
Concentration	0.5 mg/ml
Storage	Store at -20C. Avoid freeze-thaw cycles.
Clonality	Polyclonal
Preservative	0.02% Sodium Azide
Isotype	IgG
Purity	Immunogen affinity purified
Buffer	Tris saline (20 mM Tris pH 7.3, 150 mM NaCl), 0.5% BSA
Product Description	
Host	Goat
Gene ID	10095
Gene Symbol	ARPC1B
Species	Human
Immunogen	Peptide with sequence AYHSFLVEPISCH corresponding to N-Terminus according to NP_005711.1.
Product Application Details	
Applications	Western Blot, Immunohistochemistry, Immunohistochemistry-Paraffin, Peptide ELISA
Recommended Dilutions	Western Blot 2 - 4 ug/ml, Immunohistochemistry 5 ug/ml, Immunohistochemistry-Paraffin 5 ug/ml, Peptide ELISA Detection limit 1:32000
Application Notes	WB: Approx. 37 kDa band observed in human liver lysates (calculated MW of 40.9 kDa band according to NP_005711). A minor band of unknown identity was also consistently observed at 28 kDa. IHC: Paraffin embedded Human Thymus

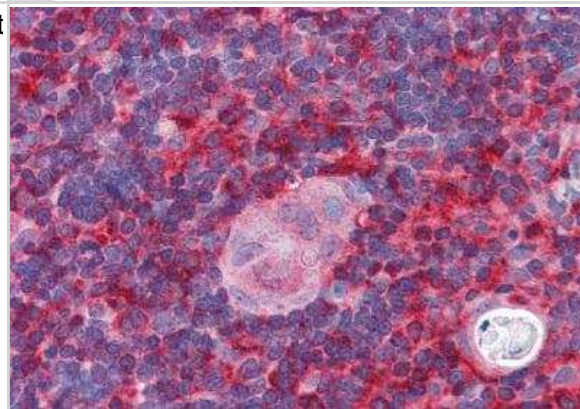


Images

Western Blot: actin-related protein 2/3 complex subunit 1B Antibody [NB300-898] - Staining (2 ug/ml) of Human Liver lysate (RIPA buffer, 35 ug total protein per lane). Primary incubated for 1 hour. Detected by chemiluminescence.

250kDa
150kDa
100kDa
75kDa
50kDa
37kDa
25kDa
20kDa

Immunohistochemistry-Paraffin: actin-related protein 2/3 complex subunit 1B Antibody [NB300-898] - Staining of paraffin embedded Human Thymus. Steamed antigen retrieval with citrate buffer pH 6, AP-staining.



Publications

Welch MD, DePace AH, Verma S et al. The human Arp2/3 complex is composed of evolutionarily conserved subunits and is localized to cellular regions of dynamic actin filament assembly. J Cell Biol 1997-07-28 [PMID: 9230079]

Moghe S, Jiang F, Miura Y et al. The CUL3-KLHL18 ligase regulates mitotic entry and ubiquitylates Aurora-A. Biol Open. 2012-02-15 [PMID: 23213400]

Molli PR, Li DQ, Bagheri-Yarmand R et al. Arpc1b, a centrosomal protein, is both an activator and substrate of Aurora A. J Cell Biol. 2010-07-12 [PMID: 20603326] (WB)

Details:

WB: Stable and transfected ZR-75 breast cancer cell lines, various figures. Note: The Arpc1b antibody was SiRNA validated by western blot, Fig 4D. The CUL3-KLHL18 ligase regulates mitotic entry and ubiquitylates, Arpc1b (IMG-3367).



Novus Biologicals USA

10730 E. Briarwood Avenue
Centennial, CO 80112
USA
Phone: 303.730.1950
Toll Free: 1.888.506.6887
Fax: 303.730.1966
nb-customerservice@bio-techne.com

Bio-Techne Canada

21 Canmotor Ave
Toronto, ON M8Z 4E6
Canada
Phone: 905.827.6400
Toll Free: 855.668.8722
Fax: 905.827.6402
canada.inquires@bio-techne.com

Bio-Techne Ltd

19 Barton Lane
Abingdon Science Park
Abingdon, OX14 3NB, United Kingdom
Phone: (44) (0) 1235 529449
Free Phone: 0800 37 34 15
Fax: (44) (0) 1235 533420
info.EMEA@bio-techne.com

General Contact Information

www.novusbio.com
Technical Support: nb-technical@bio-techne.com
Orders: nb-customerservice@bio-techne.com
General: novus@novusbio.com

Products Related to NB300-898

NBL1-07726	actin-related protein 2/3 complex subunit 1B Overexpression Lysate
NB300-898PEP	actin-related protein 2/3 complex subunit 1B Peptide
HAF017	Rabbit anti-Goat IgG Secondary Antibody [HRP (Horseradish Peroxidase)]
HAF109	Donkey anti-Goat IgG Secondary Antibody [HRP (Horseradish Peroxidase)]
NB410-28088-1mg	Goat IgG Isotype Control

Limitations

This product is for research use only and is not approved for use in humans or in clinical diagnosis. Primary Antibodies are guaranteed for 1 year from date of receipt.

For more information on our 100% guarantee, please visit www.novusbio.com/guarantee

Earn gift cards/discounts by submitting a review: www.novusbio.com/reviews/submit/NB300-898

Earn gift cards/discounts by submitting a publication using this product:
www.novusbio.com/publications



