

Product Datasheet

HSF1 Antibody NB300-730

Unit Size: 100uL

Store at -20C. Avoid freeze-thaw cycles.

www.novusbio.com



technical@novusbio.com

Publications: 1

Protocols, Publications, Related Products, Reviews, Research Tools and Images at:
www.novusbio.com/NB300-730

Updated 5/13/2021 v.20.1

Earn rewards for product
reviews and publications.

Submit a publication at www.novusbio.com/publications

Submit a review at www.novusbio.com/reviews/destination/NB300-730



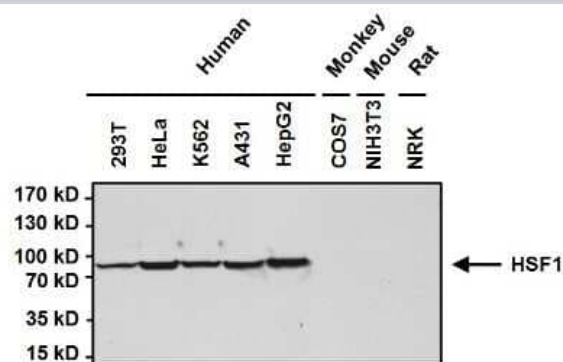
NB300-730**HSF1 Antibody**

Product Information	
Unit Size	100uL
Concentration	This product is unpurified. The exact concentration of antibody is not quantifiable.
Storage	Store at -20C. Avoid freeze-thaw cycles.
Clonality	Polyclonal
Preservative	0.05% Sodium Azide
Isotype	IgG
Purity	Unpurified
Buffer	Whole antisera with PBS
Product Description	
Host	Rabbit
Gene ID	3297
Gene Symbol	HSF1
Species	Human, Mouse, Rat
Immunogen	Recombinant human HSF1 expressed in E. coli.
Notes	
Product Application Details	
Applications	Western Blot, ELISA, Gel Super Shift Assays, Immunocytochemistry/Immunofluorescence, Immunoprecipitation
Recommended Dilutions	Western Blot 1:1000 - 1:10000, ELISA 1:100 - 1:2000, Immunocytochemistry/Immunofluorescence 1:50, Immunoprecipitation 2 ug, Gel Super Shift Assays 1:1 - 1:100
Application Notes	WB: Detects an approx. 83 kDa protein representing HSF1 from NIH/3T3 cell lysate. IP: Detects an approx. 69 kDa protein representing HSF1 from HeLaS3 cells.

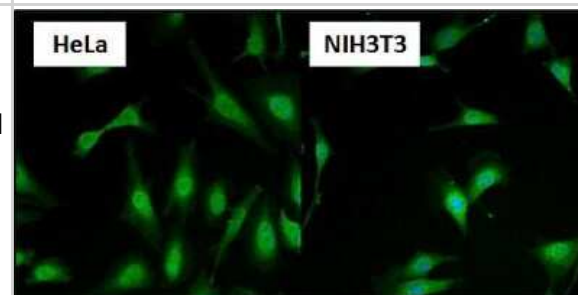


Images

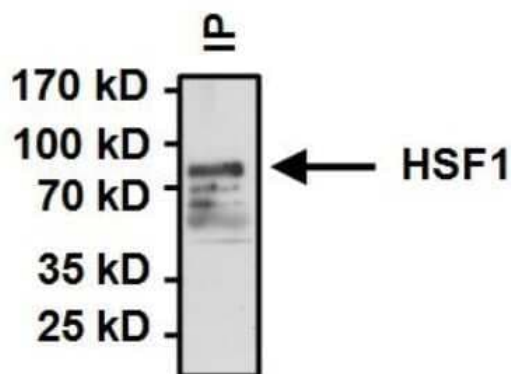
Western Blot: HSF1 Antibody [NB300-730] - Analysis of Heat Shock Factor 1 (HSF1) was performed by loading 50ug of the indicated whole cell lysates per well onto a 4-20% Tris-HCl polyacrylamide gel. Proteins were transferred to a PVDF membrane and blocked with 5% BSA/TBST for at least 1 hour. The membrane was probed with a HSF1 rabbit polyclonal antibody at a dilution of 1:1000 overnight at 4C on a rocking platform, washed in TBS-0.1%Tween 20, and probed with a goat anti-rabbit IgG-HRP secondary antibody at a dilution of 1:20,000 for at least one hour. Chemiluminescent detection was performed using SuperSignal West Pico.



Immunocytochemistry/Immunofluorescence: HSF1 Antibody [NB300-730] - Formalin fixed cells were permeabilized with 0.1% Triton X-100 in TBS for 10 minutes at room temperature and blocked with 1% Blocker BSA for 15 minutes at room temperature. Cells were probed with a HSF1 polyclonal antibody at a dilution of 1:400 for 30 minutes at room temperature. Nuclei (blue) were stained with Hoechst 33342 dye.



Immunoprecipitation: HSF1 Antibody [NB300-730] - Analysis of Heat Shock Factor 1 (HSF 1) was performed on HeLa cells. Antigen: antibody complexes were formed by incubating 500ug whole cell lysate with 2ug of HSF1 polyclonal antibody overnight on a rocking platform at 4C. Immune complexes were captured on 50ul Protein A/G Plus Agarose, washed extensively, and eluted with 5X Lane Marker Reducing Sample Buffer. Samples were resolved on a 4-20% Tris-HCl polyacrylamide gel, transferred to a PVDF membrane, and blocked with 5% BSA/TBST for at least 1 hour. The membrane was probed with a HSF1 polyclonal antibody at a dilution of 1:1000 overnight rotating at 4C, washed in TBST, and probed with Clean Blot IP Detection Reagent-HRP at a dilution of 1:1000 for at least one hour. Chemiluminescent detection was performed using SuperSignal West Dura.



Publications

Rogers RS, Morris EM, Wheatley JL et al. Deficiency in the Heat Stress Response Could Underlie Susceptibility to Metabolic Disease. Diabetes. 2016-08-23 [PMID: 27554472] (WB, Rat)



Novus Biologicals USA

10730 E. Briarwood Avenue
Centennial, CO 80112
USA
Phone: 303.730.1950
Toll Free: 1.888.506.6887
Fax: 303.730.1966
nb-customerservice@bio-techne.com

Bio-Techne Canada

21 Canmotor Ave
Toronto, ON M8Z 4E6
Canada
Phone: 905.827.6400
Toll Free: 855.668.8722
Fax: 905.827.6402
canada.inquires@bio-techne.com

Bio-Techne Ltd

19 Barton Lane
Abingdon Science Park
Abingdon, OX14 3NB, United Kingdom
Phone: (44) (0) 1235 529449
Free Phone: 0800 37 34 15
Fax: (44) (0) 1235 533420
info.EMEA@bio-techne.com

General Contact Information

www.novusbio.com
Technical Support: nb-technical@bio-
techne.com
Orders: nb-customerservice@bio-techne.com
General: novus@novusbio.com

Limitations

This product is for research use only and is not approved for use in humans or in clinical diagnosis. Primary Antibodies are guaranteed for 1 year from date of receipt.

For more information on our 100% guarantee, please visit www.novusbio.com/guarantee

Earn gift cards/discounts by submitting a review: www.novusbio.com/reviews/submit/NB300-730

Earn gift cards/discounts by submitting a publication using this product:
www.novusbio.com/publications

