

# Product Datasheet

## Glucocorticoid Receptor alpha Antibody - BSA Free NB300-633

Unit Size: 50 ug

Store at -20C. Avoid freeze-thaw cycles.

[www.novusbio.com](http://www.novusbio.com)



[technical@novusbio.com](mailto:technical@novusbio.com)

### Publications: 4

Protocols, Publications, Related Products, Reviews, Research Tools and Images at:  
[www.novusbio.com/NB300-633](http://www.novusbio.com/NB300-633)

Updated 10/23/2024 v.20.1

Earn rewards for product  
reviews and publications.

Submit a publication at [www.novusbio.com/publications](http://www.novusbio.com/publications)

Submit a review at [www.novusbio.com/reviews/destination/NB300-633](http://www.novusbio.com/reviews/destination/NB300-633)

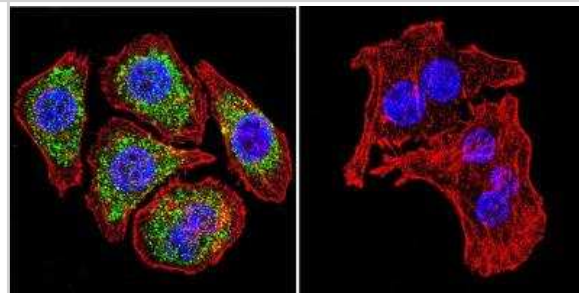


**NB300-633****Glucocorticoid Receptor alpha Antibody - BSA Free**

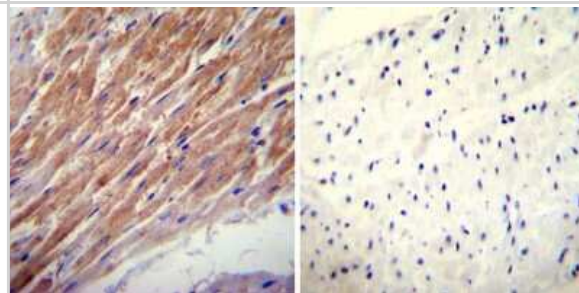
<b>Product Information</b>	
<b>Unit Size</b>	50 ug
<b>Concentration</b>	LYOPH mg/ml
<b>Storage</b>	Store at -20C. Avoid freeze-thaw cycles.
<b>Clonality</b>	Polyclonal
<b>Preservative</b>	0.05% Sodium Azide
<b>Reconstitution Instructions</b>	Reconstitute with 50 ul ultra-pure water to desired concentration.
<b>Isotype</b>	IgG
<b>Purity</b>	Immunogen affinity purified
<b>Buffer</b>	PBS
<b>Product Description</b>	
<b>Host</b>	Rabbit
<b>Gene ID</b>	2908
<b>Gene Symbol</b>	NR3C1
<b>Species</b>	Human, Mouse, Rat, Sheep
<b>Reactivity Notes</b>	Sheep reactivity reported in scientific literature (see Gupta et al 2003).
<b>Specificity/Sensitivity</b>	Detects GR alpha from human, mouse and rat tissues. This does not detect GR beta.
<b>Immunogen</b>	Synthetic Peptide: C(755) E I I T N Q I P K Y S N G N I K K(771)
<b>Product Application Details</b>	
<b>Applications</b>	Western Blot, Simple Western, Immunocytochemistry/ Immunofluorescence, Immunohistochemistry, Immunohistochemistry-Paraffin, Immunoprecipitation, Chromatin Immunoprecipitation (ChIP)
<b>Recommended Dilutions</b>	Western Blot 4 ug/ml, Simple Western, Immunohistochemistry 1:20, Immunocytochemistry/ Immunofluorescence 1:10-1:500, Immunoprecipitation 1:10 - 1:500, Immunohistochemistry-Paraffin 1:20, Chromatin Immunoprecipitation (ChIP) 1:10-1:500
<b>Application Notes</b>	Useful in WB, IP, ICC, IF and ChIP. WB: Detects an approx. 90 kDa protein representing GR in HeLa cell lysate. See <a href="#">Simple Western Antibody Database</a> for Simple Western validation: tested in mammalian cell lysates; antibody dilution of 1:50; separated by size; detects a band at 95 kDa

## Images

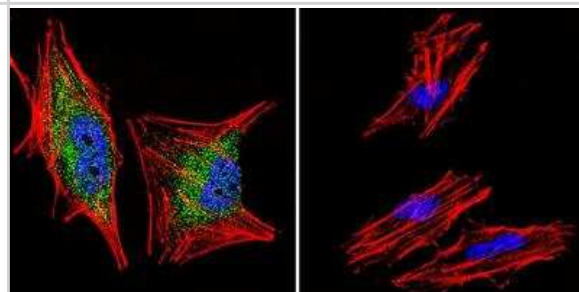
**Immunocytochemistry/Immunofluorescence: Glucocorticoid Receptor alpha Antibody [NB300-633]** - Analysis of Glucocorticoid Receptor alpha using Glucocorticoid Receptor alpha Polyclonal Antibody shows staining in U251 Cells. Glucocorticoid Receptor alpha (green), F-Actin staining with Phalloidin (red) and nuclei with DAPI (blue) is shown. Cells were grown on chamber slides and fixed with formaldehyde prior to staining. Cells were probed without (control) or with an antibody recognizing Glucocorticoid Receptor alpha at a dilution of 1:100 over night at 4C, washed with PBS and incubated with a DyLight-488 conjugated.



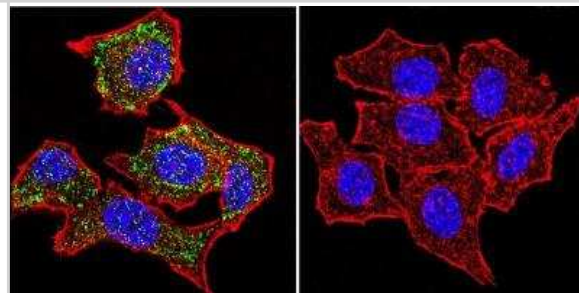
**Immunohistochemistry-Paraffin: Glucocorticoid Receptor alpha Antibody [NB300-633]** - Both normal and cancer biopsies of deparaffinized Human heart tissues.



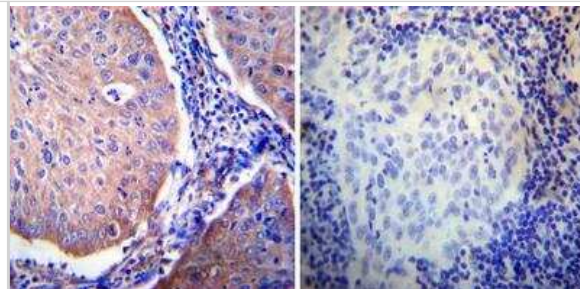
**Immunocytochemistry/Immunofluorescence: Glucocorticoid Receptor alpha Antibody [NB300-633]** - Analysis of Glucocorticoid Receptor alpha using Glucocorticoid Receptor alpha Polyclonal Antibody shows staining in A2058 Cells. Glucocorticoid Receptor alpha (green), F-Actin staining with Phalloidin (red) and nuclei with DAPI (blue) is shown. Cells were grown on chamber slides and fixed with formaldehyde prior to staining. Cells were probed without (control) or with an antibody recognizing Glucocorticoid Receptor alpha at a dilution of 1:200 over night at 4C, washed with PBS and incubated with a DyLight-488 conjugated.



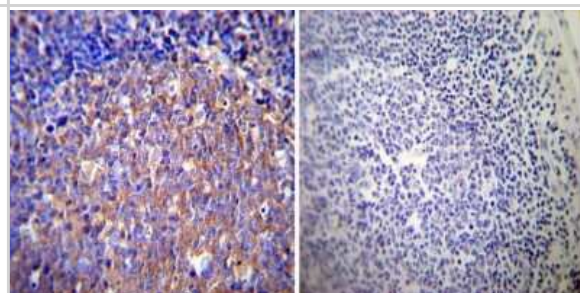
**Immunocytochemistry/Immunofluorescence: Glucocorticoid Receptor alpha Antibody [NB300-633]** - Analysis of Glucocorticoid Receptor alpha using Glucocorticoid Receptor alpha Polyclonal Antibody shows staining in Hela Cells. Glucocorticoid Receptor alpha (green), F-Actin staining with Phalloidin (red) and nuclei with DAPI (blue) is shown. Cells were grown on chamber slides and fixed with formaldehyde prior to staining. Cells were probed without (control) or with an antibody recognizing Glucocorticoid Receptor alpha at a dilution of 1:100 over night at 4C, washed with PBS and incubated with a DyLight-488 conjugated secondary antibody.



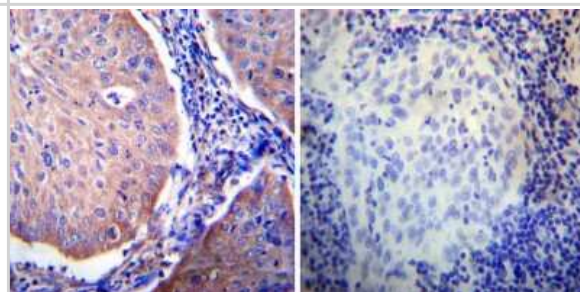
Immunohistochemistry-Paraffin: Glucocorticoid Receptor alpha Antibody [NB300-633] - Both normal and cancer biopsies of deparaffinized Human cervical carcinoma tissues.



Immunohistochemistry-Paraffin: Glucocorticoid Receptor alpha Antibody [NB300-633] - Both normal and cancer biopsies of deparaffinized Human tonsil tissues.



Immunohistochemistry-Paraffin: Glucocorticoid Receptor alpha Antibody [NB300-633] - Both normal and cancer biopsies of deparaffinized Human cervical carcinoma tissues.



## Publications

Rodrigues VDST, Miranda RA, Soares PN et al. Neonatal nicotine exposure changes insulin status in fat depots: sex-related differences Journal of developmental origins of health and disease 2021-04-05 [PMID: 33818369]

Yari H, Jin L et al. LncRNA REG1CP promotes tumorigenesis through an enhancer complex to recruit FANCD1 helicase for REG3A transcription. Nat Commun 2019-11-25 [PMID: 31767869] (Chemotaxis, Human)

Miranda RA, Pietrobon CB, Bertasso IM et al. Early weaning leads to specific glucocorticoid signalling in fat depots of adult rats Endocrine 2019-09-07 [PMID: 31494802]

Liang H, Kowalczyk P, Junco JJ et al. Differential Effects on Lung Cancer Cell Proliferation by Agonists of Glucocorticoid and PPARalpha Receptors. Mol Carcinog 2013-04-26 [PMID: 23625588] (WB, Human)



### **Novus Biologicals USA**

10730 E. Briarwood Avenue  
Centennial, CO 80112  
USA  
Phone: 303.730.1950  
Toll Free: 1.888.506.6887  
Fax: 303.730.1966  
nb-customerservice@bio-techne.com

### **Bio-Techne Canada**

21 Canmotor Ave  
Toronto, ON M8Z 4E6  
Canada  
Phone: 905.827.6400  
Toll Free: 855.668.8722  
Fax: 905.827.6402  
canada.inquires@bio-techne.com

### **Bio-Techne Ltd**

19 Barton Lane  
Abingdon Science Park  
Abingdon, OX14 3NB, United Kingdom  
Phone: (44) (0) 1235 529449  
Free Phone: 0800 37 34 15  
Fax: (44) (0) 1235 533420  
info.EMEA@bio-techne.com

### **General Contact Information**

www.novusbio.com  
Technical Support: nb-technical@bio-techne.com  
Orders: nb-customerservice@bio-techne.com  
General: novus@novusbio.com

### **Products Related to NB300-633**

---

NBL1-10121	eEF1A1 Overexpression Lysate
HAF008	Goat anti-Rabbit IgG Secondary Antibody [HRP]
NB7160	Goat anti-Rabbit IgG (H+L) Secondary Antibody [HRP]
NBP2-24891	Rabbit IgG Isotype Control

---

### **Limitations**

This product is for research use only and is not approved for use in humans or in clinical diagnosis. Primary Antibodies are guaranteed for 1 year from date of receipt.

For more information on our 100% guarantee, please visit [www.novusbio.com/guarantee](http://www.novusbio.com/guarantee)

Earn gift cards/discounts by submitting a review: [www.novusbio.com/reviews/submit/NB300-633](http://www.novusbio.com/reviews/submit/NB300-633)

Earn gift cards/discounts by submitting a publication using this product:  
[www.novusbio.com/publications](http://www.novusbio.com/publications)

