

Product Datasheet

PSD93 Antibody NB300-546

Unit Size: 100 ug

Store at -20C. Avoid freeze-thaw cycles.

www.novusbio.com



technical@novusbio.com

Protocols, Publications, Related Products, Reviews, Research Tools and Images at:
www.novusbio.com/NB300-546

Updated 10/23/2024 v.20.1

Earn rewards for product
reviews and publications.

Submit a publication at www.novusbio.com/publications

Submit a review at www.novusbio.com/reviews/destination/NB300-546



NB300-546**PSD93 Antibody**

Product Information	
Unit Size	100 ug
Concentration	1 mg/ml
Storage	Store at -20C. Avoid freeze-thaw cycles.
Clonality	Polyclonal
Preservative	0.05% Sodium Azide
Isotype	IgG
Purity	Immunogen affinity purified
Buffer	PBS with 1 mg/ml BSA

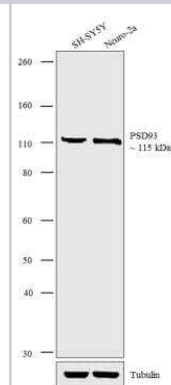
Product Description	
Host	Rabbit
Gene ID	1740
Gene Symbol	DLG2
Species	Human, Mouse, Rat
Marker	post-Synaptic Marker
Specificity/Sensitivity	Detects Post Synaptic Density 93 (PSD 93) from rat tissues. This does not detect other synapse-associated protein family members.
Immunogen	Synthetic peptide corresponding to residues N(352) K L C D K P A S P R H Y S P(366) of human PSD-93.

Product Application Details	
Applications	Western Blot, Immunocytochemistry/ Immunofluorescence, Immunohistochemistry, Immunohistochemistry-Frozen
Recommended Dilutions	Western Blot 3 ug/ml, Immunohistochemistry 1:10 - 1:500, Immunocytochemistry/ Immunofluorescence 1:10 - 1:500, Immunohistochemistry-Frozen 5 ug/ml
Application Notes	WB: Detects an approx. 110 kDa protein representing PSD 93 in rat brain extract. Immunohistochemical staining in rat cerebellum with yields a pattern consistent with post-synaptic localization.

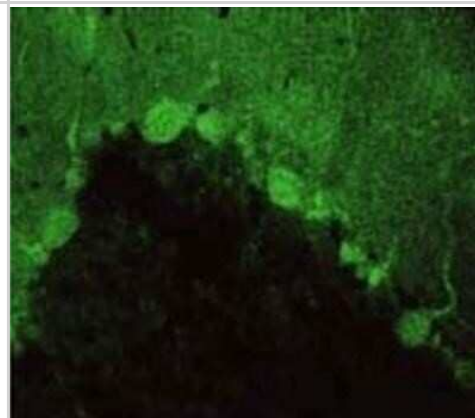


Images

Western Blot: PSD93 Antibody [NB300-546] - Western blot analysis of membrane-enriched extracts (30 ug lysate) from SHY-SY5Y (Lane 1), and Neuro-2a (Lane 2) cell lines. PSD93 antibody was used at a concentration of 3 ug/mL and the signal was developed using Goat anti-Rabbit IgG (H+L) secondary antibody (HRP conjugated) through chemiluminescence method. Approximately 115 kDa band corresponding to PSD93 was observed in both samples. The membrane was further processed for loading control blot (Tubulin) to confirm an equal loading of samples in both lanes.

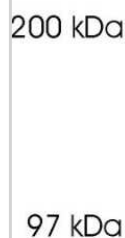


Immunocytochemistry/Immunofluorescence: PSD93 Antibody [NB300-546] - Immunolocalization of at cerebellum.



Western Blot: PSD93 Antibody [NB300-546] - Analysis of PSD-93 on rat brain extract.

Fig. 2





Novus Biologicals USA

10730 E. Briarwood Avenue
Centennial, CO 80112
USA
Phone: 303.730.1950
Toll Free: 1.888.506.6887
Fax: 303.730.1966
nb-customerservice@bio-techne.com

Bio-Techne Canada

21 Canmotor Ave
Toronto, ON M8Z 4E6
Canada
Phone: 905.827.6400
Toll Free: 855.668.8722
Fax: 905.827.6402
canada.inquires@bio-techne.com

Bio-Techne Ltd

19 Barton Lane
Abingdon Science Park
Abingdon, OX14 3NB, United Kingdom
Phone: (44) (0) 1235 529449
Free Phone: 0800 37 34 15
Fax: (44) (0) 1235 533420
info.EMEA@bio-techne.com

General Contact Information

www.novusbio.com
Technical Support: nb-technical@bio-techne.com
Orders: nb-customerservice@bio-techne.com
General: novus@novusbio.com

Products Related to NB300-546

HAF008	Goat anti-Rabbit IgG Secondary Antibody [HRP]
NB7160	Goat anti-Rabbit IgG (H+L) Secondary Antibody [HRP]
NBP2-24891	Rabbit IgG Isotype Control
NBP1-88088PEP	PSD93 Recombinant Protein Antigen

Limitations

This product is for research use only and is not approved for use in humans or in clinical diagnosis. Primary Antibodies are guaranteed for 1 year from date of receipt.

For more information on our 100% guarantee, please visit www.novusbio.com/guarantee

Earn gift cards/discounts by submitting a review: www.novusbio.com/reviews/submit/NB300-546

Earn gift cards/discounts by submitting a publication using this product:
www.novusbio.com/publications

