

Product Datasheet

Albumin Antibody - BSA Free

NB300-336

Unit Size: 0.05 mg

Store at 4C short term. Aliquot and store at -20C long term. Avoid freeze-thaw cycles.

www.novusbio.com



technical@novusbio.com

Protocols, Publications, Related Products, Reviews, Research Tools and Images at:
www.novusbio.com/NB300-336

Updated 10/23/2024 v.20.1

Earn rewards for product
reviews and publications.

Submit a publication at www.novusbio.com/publications

Submit a review at www.novusbio.com/reviews/destination/NB300-336



NB300-336

Albumin Antibody - BSA Free

Product Information

Unit Size	0.05 mg
Concentration	1.0 mg/ml
Storage	Store at 4C short term. Aliquot and store at -20C long term. Avoid freeze-thaw cycles.
Clonality	Polyclonal
Preservative	0.02% Sodium Azide
Isotype	IgY
Purity	Immunogen affinity purified
Buffer	PBS

Product Description

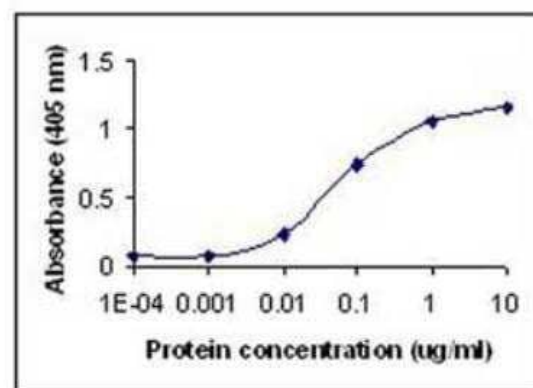
Host	Chicken
Gene ID	213
Gene Symbol	ALB
Species	Human, Mouse, Rat, Porcine, Bovine, Canine
Reactivity Notes	Cross-reacts with Human, Mouse, Rat, Cow, Dog and Pig. Not yet tested in other species.
Specificity/Sensitivity	Albumin
Immunogen	Recombinant serum albumin (GI # 113576) sequence 1-609
Notes	Chicken products cannot be exported to Canada.

Product Application Details

Applications	Western Blot, ELISA
Recommended Dilutions	Western Blot 1:200-1:500, ELISA 1:100-1:2000
Application Notes	This antibody can be used in ELISA and Western Blot. In Western Blot a 69.4 kDa band is seen. Recommended Starting Dilutions*: ELISA: 0.1-0.5 ug/ml WB: 1/1000 Not tested in other applications. *Optimal dilutions should be determined by the end user.

Images

ELISA: Albumin Antibody [NB300-336] - Direct ELISA Test. Human serum albumin protein as test antigen. Affi-pure anti-HSA IgY as primary antibody (0.1 ug/ml), and Rabbit anti-IgY-HRP as 2nd antibody. (anti-ALB)





Novus Biologicals USA

10730 E. Briarwood Avenue
Centennial, CO 80112
USA
Phone: 303.730.1950
Toll Free: 1.888.506.6887
Fax: 303.730.1966
nb-customerservice@bio-techne.com

Bio-Techne Canada

21 Canmotor Ave
Toronto, ON M8Z 4E6
Canada
Phone: 905.827.6400
Toll Free: 855.668.8722
Fax: 905.827.6402
canada.inquires@bio-techne.com

Bio-Techne Ltd

19 Barton Lane
Abingdon Science Park
Abingdon, OX14 3NB, United Kingdom
Phone: (44) (0) 1235 529449
Free Phone: 0800 37 34 15
Fax: (44) (0) 1235 533420
info.EMEA@bio-techne.com

General Contact Information

www.novusbio.com
Technical Support: nb-technical@bio-techne.com
Orders: nb-customerservice@bio-techne.com
General: novus@novusbio.com

Products Related to NB300-336

NBL1-07449	Human Serum Albumin Overexpression Lysate
BAF010	Goat anti-Chicken IgY Secondary Antibody [Biotin]
NB7276	Goat anti-Chicken IgM Heavy Chain Secondary Antibody
NBP1-96881	Albumin Native Protein

Limitations

This product is for research use only and is not approved for use in humans or in clinical diagnosis. Primary Antibodies are guaranteed for 1 year from date of receipt.

For more information on our 100% guarantee, please visit www.novusbio.com/guarantee

Earn gift cards/discounts by submitting a review: www.novusbio.com/reviews/submit/NB300-336

Earn gift cards/discounts by submitting a publication using this product:
www.novusbio.com/publications

