

Product Datasheet

IGSF4A/SynCAM1/CADM1 Antibody NB300-186

Unit Size: 0.1 ml

Store at 4C short term. Aliquot and store at -20C long term. Avoid freeze-thaw cycles.

www.novusbio.com



technical@novusbio.com

Publications: 2

Protocols, Publications, Related Products, Reviews, Research Tools and Images at:
www.novusbio.com/NB300-186

Updated 4/13/2025 v.20.1

Earn rewards for product
reviews and publications.

Submit a publication at www.novusbio.com/publications

Submit a review at www.novusbio.com/reviews/destination/NB300-186



NB300-186**IGSF4A/SynCAM1/CADM1 Antibody**

Product Information	
Unit Size	0.1 ml
Concentration	This product is unpurified. The exact concentration of antibody is not quantifiable.
Storage	Store at 4C short term. Aliquot and store at -20C long term. Avoid freeze-thaw cycles.
Clonality	Polyclonal
Preservative	0.02% Sodium Azide
Isotype	IgG
Purity	Unpurified
Buffer	Whole antisera

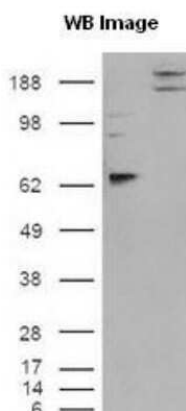
Product Description	
Host	Rabbit
Gene ID	23705
Gene Symbol	CADM1
Species	Human, Rat
Immunogen	A synthetic peptide corresponding to the C-terminal region of rat SynCAM/CADM1.

Product Application Details	
Applications	Western Blot, Simple Western, Immunocytochemistry/ Immunofluorescence
Recommended Dilutions	Western Blot 1:1000, Simple Western 1:1000, Immunocytochemistry/ Immunofluorescence 1:2000
Application Notes	<p>This SynCAM/CADM1 antibody can be used for Western blot and Immunocytochemistry/Immunofluorescence. Brain fractions give banding patterns of a core glycosylation population around 50kDa and a slightly higher glycosylated population around 65 kDa. Heterologous cell lysates give a single band around 107kDa. In ICC/IF, membrane staining was observed in SH-SY-5Y cells.</p> <p>In Simple Western only 10 - 15 uL of the recommended dilution is used per data point. See Simple Western Antibody Database for Simple Western validation: Tested in Human Brain lysate 0.5 mg/mL, separated by Size, antibody dilution of 1:1000, apparent MW was 62 kDa. Separated by Size-Wes, Sally Sue/Peggy Sue.</p>

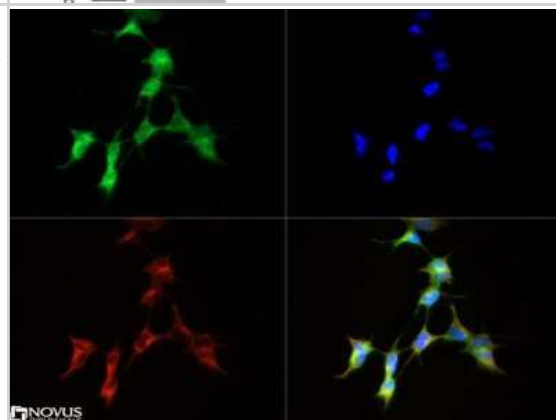


Images

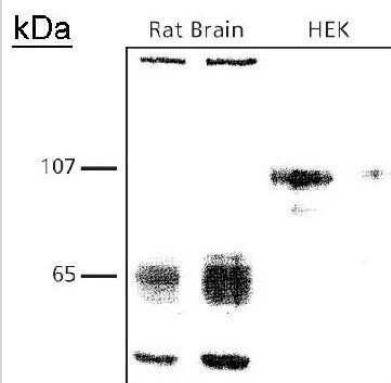
Western Blot: IGSF4A/SynCAM1/CADM1 Antibody [NB300-186] - Cells were transfected with the pCMV6-ENTRY control or pCMV6-ENTRY CADM1 cDNA for 48 hrs and lysed. Equivalent amounts of cell lysates (5 ug per lane) were separated by SDS-PAGE and immunoblotted with anti-SynCAM/CADM1.



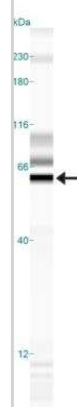
Immunocytochemistry/Immunofluorescence: IGSF4A/SynCAM1/CADM1 Antibody [NB300-186] - SynCAM/CADM1 antibody was tested in SH-SY-5Y cells with Dylight 488 (green). Nuclei and alpha-tubulin were counterstained with DAPI (blue) and Dylight 550 (red).



Western Blot: IGSF4A/SynCAM1/CADM1 Antibody [NB300-186] - Rat brain and HEK cell lysates showing different glycosylation patterns. Brain fractions give banding patterns of a core glycosylation population around 50kDa and a slightly higher glycosylated population around 65 kDa. The heterologous HEK cell lysates give a single, fully glycosylated, band around 107kDa.



Simple Western: IGSF4A/SynCAM1/CADM1 Antibody [NB300-186] - Simple Western lane view shows a specific band for SynCAM in 0.5 mg/ml of Human Brain lysate. This experiment was performed under reducing conditions using the 12-230 kDa separation system.



Publications

Mottarlini F, Rizzi B, Targa G, Buzzelli V et Al. Communal nesting shapes the sex-dependent glutamatergic response to early life stress in the rat prefrontal cortex Front Psychiatry 2024-06-05 [PMID: 38835543]

Tarbe, N et al. SMAGP, a new small trans-membrane glycoprotein altered in cancer. Oncogene;23(19):3395-403. 2004-04-22 [PMID: 15021913] (WB, Human, Rat)





Novus Biologicals USA

10730 E. Briarwood Avenue
Centennial, CO 80112
USA
Phone: 303.730.1950
Toll Free: 1.888.506.6887
Fax: 303.730.1966
nb-customerservice@bio-techne.com

Bio-Techne Canada

21 Canmotor Ave
Toronto, ON M8Z 4E6
Canada
Phone: 905.827.6400
Toll Free: 855.668.8722
Fax: 905.827.6402
canada.inquires@bio-techne.com

Bio-Techne Ltd

19 Barton Lane
Abingdon Science Park
Abingdon, OX14 3NB, United Kingdom
Phone: (44) (0) 1235 529449
Free Phone: 0800 37 34 15
Fax: (44) (0) 1235 533420
info.EMEA@bio-techne.com

General Contact Information

www.novusbio.com
Technical Support: nb-technical@bio-techne.com
Orders: nb-customerservice@bio-techne.com
General: novus@novusbio.com

Products Related to NB300-186

NB300-186PEP	IGSF4A/SynCAM1/CADM1 Antibody Blocking Peptide
HAF008	Goat anti-Rabbit IgG Secondary Antibody [HRP]
NB7160	Goat anti-Rabbit IgG (H+L) Secondary Antibody [HRP]
NBP2-24891	Rabbit IgG Isotype Control

Limitations

This product is for research use only and is not approved for use in humans or in clinical diagnosis. Primary Antibodies are guaranteed for 1 year from date of receipt.

For more information on our 100% guarantee, please visit www.novusbio.com/guarantee

Earn gift cards/discounts by submitting a review: www.novusbio.com/reviews/submit/NB300-186

Earn gift cards/discounts by submitting a publication using this product:
www.novusbio.com/publications

