

Product Datasheet

TRPC4 Antibody NB200-605

Unit Size: 0.05 ml

Aliquot and store at -20C or -80C. Avoid freeze-thaw cycles.

www.novusbio.com



technical@novusbio.com

Protocols, Publications, Related Products, Reviews, Research Tools and Images at:
www.novusbio.com/NB200-605

Updated 3/30/2022 v.20.1

Earn rewards for product
reviews and publications.

Submit a publication at www.novusbio.com/publications

Submit a review at www.novusbio.com/reviews/destination/NB200-605



NB200-605

TRPC4 Antibody

Product Information	
Unit Size	0.05 ml
Concentration	1.0 mg/ml
Storage	Aliquot and store at -20C or -80C. Avoid freeze-thaw cycles.
Clonality	Polyclonal
Preservative	0.025% Sodium Azide
Isotype	IgG
Purity	Immunogen affinity purified
Buffer	PBS (pH 7.4), 1.0% BSA and 5% Sucrose

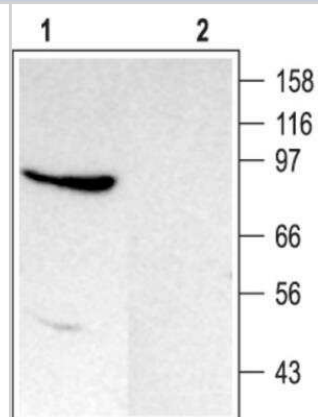
Product Description	
Host	Rabbit
Gene ID	7223
Gene Symbol	TRPC4
Species	Mouse, Rat
Reactivity Notes	Cross-reacts with Rat and Mouse. Expected to cross-react with Human due to sequence identity. Not yet tested in other species.
Specificity/Sensitivity	TRPC4
Immunogen	Synthetic peptide: CKEKHAHEEDSSIDYDL, corresponding to amino acids 943-958 of Mouse TRPC4.

Product Application Details	
Applications	Western Blot, Immunohistochemistry, Immunohistochemistry-Frozen, Immunohistochemistry-Paraffin
Recommended Dilutions	Western Blot 1:200, Immunohistochemistry 1:10-1:500, Immunohistochemistry-Paraffin 1:10-1:500, Immunohistochemistry-Frozen 1:10-1:500
Application Notes	Predicted molecular weight: 117 kDa. Not tested in other applications. Optimal dilutions/concentrations should be determined by the end user.

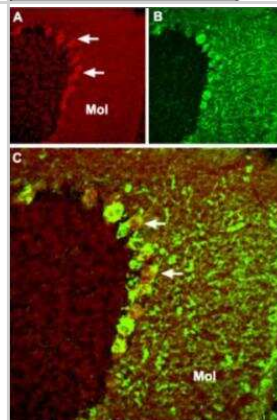


Images

Western Blot: TRPC4 Antibody [NB200-605] - Anti-TRPC4: Western blot analysis of Rat brain membranes. Lanes: 1. Anti-TRPC4 antibody; 2. Anti-TRPC4 antibody, preincubated with the control peptide antigen.



Immunohistochemistry-Frozen: TRPC4 Antibody [NB200-605] - Anti-TRPC4: Immunohistochemical staining of Mouse cerebellum frozen sections with Anti-TRPC4 antibody. A. TRPC4 (red) appears in Purkinje cells (arrows) and in the molecular (Mol) layer. B. Staining with Mouse Anti-Parvalbumin (PV) in the same brain section. C. Confocal merge of TRPC4 and PV demonstrates partial co-localization in the Purkinje and the molecular layers.





Novus Biologicals USA

10730 E. Briarwood Avenue
Centennial, CO 80112
USA
Phone: 303.730.1950
Toll Free: 1.888.506.6887
Fax: 303.730.1966
nb-customerservice@bio-techne.com

Bio-Techne Canada

21 Canmotor Ave
Toronto, ON M8Z 4E6
Canada
Phone: 905.827.6400
Toll Free: 855.668.8722
Fax: 905.827.6402
canada.inquires@bio-techne.com

Bio-Techne Ltd

19 Barton Lane
Abingdon Science Park
Abingdon, OX14 3NB, United Kingdom
Phone: (44) (0) 1235 529449
Free Phone: 0800 37 34 15
Fax: (44) (0) 1235 533420
info.EMEA@bio-techne.com

General Contact Information

www.novusbio.com
Technical Support: nb-technical@bio-
techne.com
Orders: nb-customerservice@bio-techne.com
General: novus@novusbio.com

Limitations

This product is for research use only and is not approved for use in humans or in clinical diagnosis. Primary Antibodies are guaranteed for 1 year from date of receipt.

For more information on our 100% guarantee, please visit www.novusbio.com/guarantee

Earn gift cards/discounts by submitting a review: www.novusbio.com/reviews/submit/NB200-605

Earn gift cards/discounts by submitting a publication using this product:
www.novusbio.com/publications

