

# Product Datasheet

## LHX6 Antibody - BSA Free NB200-526

Unit Size: 100 ul

Store at 4C short term. Aliquot and store at -20C long term. Avoid freeze-thaw cycles.

[www.novusbio.com](http://www.novusbio.com)



[technical@novusbio.com](mailto:technical@novusbio.com)

Protocols, Publications, Related Products, Reviews, Research Tools and Images at:  
[www.novusbio.com/NB200-526](http://www.novusbio.com/NB200-526)

Updated 2/21/2025 v.20.1

Earn rewards for product  
reviews and publications.

Submit a publication at [www.novusbio.com/publications](http://www.novusbio.com/publications)

Submit a review at [www.novusbio.com/reviews/destination/NB200-526](http://www.novusbio.com/reviews/destination/NB200-526)



**NB200-526**

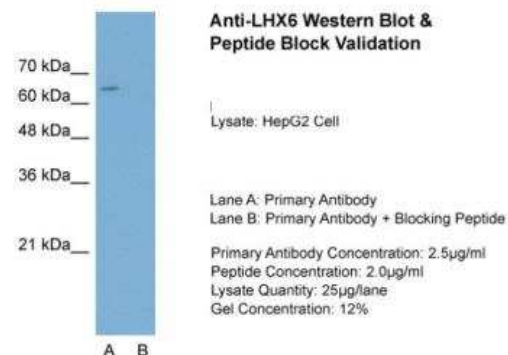
LHX6 Antibody - BSA Free

| Product Information         |  |
|-----------------------------|--|
| Unit Size                   | 100 ul   |
| Concentration               | 1 mg/ml  |
| Storage                     | Store at 4C short term. Aliquot and store at -20C long term. Avoid freeze-thaw cycles.   |
| Clonality                   | Polyclonal   |
| Preservative                | 0.09% Sodium Azide   |
| Isotype                     | IgG  |
| Purity                      | Protein A purified   |
| Buffer                      | PBS, 2% Sucrose  |
| Target Molecular Weight     | 40 kDa   |
| Product Description         |  |
| Description                 | The addition of 50% glycerol is optional for those storing this antibody at -20C and not aliquoting smaller units. However, please note that glycerol may interrupt some downstream antibody applications and should be added with caution.          |
| Host                        | Rabbit   |
| Gene ID                     | 26468  |
| Gene Symbol                 | LHX6   |
| Species                     | Human  |
| Immunogen                   | The immunogen is a synthetic peptide directed towards the C terminal region of human LHX6. Peptide Sequence LSRRVIQVWFQNCRARHKKHTPQHVPVPPSGAPPSRLPSALSDDIHYTPFS. The peptide sequence for this immunogen was taken from within the described region. |
| Product Application Details |  |
| Applications                | Western Blot, Immunohistochemistry, Immunohistochemistry-Paraffin  |
| Recommended Dilutions       | Western Blot 1.0 ug/ml, Immunohistochemistry 1:10-1:500, Immunohistochemistry-Paraffin 4-8 ug/ml   |
| Application Notes           | WB: Use in 5% skim milk / PBS buffer. Detects a band of approximately 50 kDa. Optimal dilutions/concentrations should be determined by the end user.   |

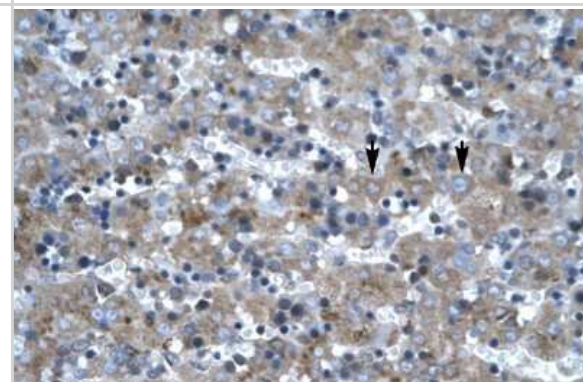


## Images

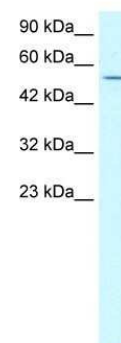
Western Blot: LHX6 Antibody [NB200-526] - Sample Tissue: HepG2, Lane A: Primary Antibody, Lane B: Primary Antibody + Blocking Peptide, Primary Antibody Concentration: 2.5ug/mL, Peptide Concentration: 2.0ug/mL, Lysate Quantity: 25ug/lane, Gel Concentration: 12%



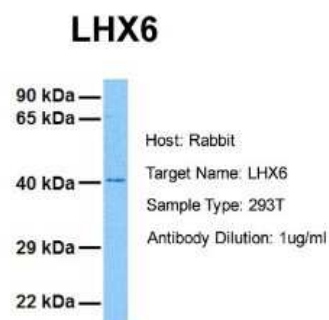
Immunohistochemistry-Paraffin: LHX6 Antibody [NB200-526] - Human Liver Tissue, antibody concentration 4-8ug/ml. Cells with positive label: Hepatocytes (indicated with arrows) 400X magnification.



Western Blot: LHX6 Antibody [NB200-526] - HepG2 cell lysate, Antibody Titration: 1.0ug/ml



Western Blot: LHX6 Antibody [NB200-526] - Sample Tissue: Human 293T Antibody Dilution: 1.0 ug/ml





### **Novus Biologicals USA**

10730 E. Briarwood Avenue  
Centennial, CO 80112  
USA  
Phone: 303.730.1950  
Toll Free: 1.888.506.6887  
Fax: 303.730.1966  
nb-customerservice@bio-techne.com

### **Bio-Techne Canada**

21 Canmotor Ave  
Toronto, ON M8Z 4E6  
Canada  
Phone: 905.827.6400  
Toll Free: 855.668.8722  
Fax: 905.827.6402  
canada.inquires@bio-techne.com

### **Bio-Techne Ltd**

19 Barton Lane  
Abingdon Science Park  
Abingdon, OX14 3NB, United Kingdom  
Phone: (44) (0) 1235 529449  
Free Phone: 0800 37 34 15  
Fax: (44) (0) 1235 533420  
info.EMEA@bio-techne.com

### **General Contact Information**

www.novusbio.com  
Technical Support: nb-technical@bio-techne.com  
Orders: nb-customerservice@bio-techne.com  
General: novus@novusbio.com

### **Products Related to NB200-526**

---

|                    |   |
|--------------------|---|
| HAF008             | Goat anti-Rabbit IgG Secondary Antibody [HRP]       |
| NB7160             | Goat anti-Rabbit IgG (H+L) Secondary Antibody [HRP] |
| NBP2-24891         | Rabbit IgG Isotype Control                          |
| H00026468-Q01-10ug | Recombinant Human LHX6 GST (N-Term) Protein         |

---

### **Limitations**

This product is for research use only and is not approved for use in humans or in clinical diagnosis. Primary Antibodies are guaranteed for 1 year from date of receipt.

For more information on our 100% guarantee, please visit [www.novusbio.com/guarantee](http://www.novusbio.com/guarantee)

Earn gift cards/discounts by submitting a review: [www.novusbio.com/reviews/submit/NB200-526](http://www.novusbio.com/reviews/submit/NB200-526)

Earn gift cards/discounts by submitting a publication using this product:  
[www.novusbio.com/publications](http://www.novusbio.com/publications)

