

# Product Datasheet

## Pappalysin-1/PAPP-A Antibody (3C8) NB200-403

Unit Size: 0.1 mg

Store at 4C. Do not freeze.

[www.novusbio.com](http://www.novusbio.com)



[technical@novusbio.com](mailto:technical@novusbio.com)

Protocols, Publications, Related Products, Reviews, Research Tools and Images at:  
[www.novusbio.com/NB200-403](http://www.novusbio.com/NB200-403)

Updated 3/30/2022 v.20.1

Earn rewards for product  
reviews and publications.

Submit a publication at [www.novusbio.com/publications](http://www.novusbio.com/publications)

Submit a review at [www.novusbio.com/reviews/destination/NB200-403](http://www.novusbio.com/reviews/destination/NB200-403)

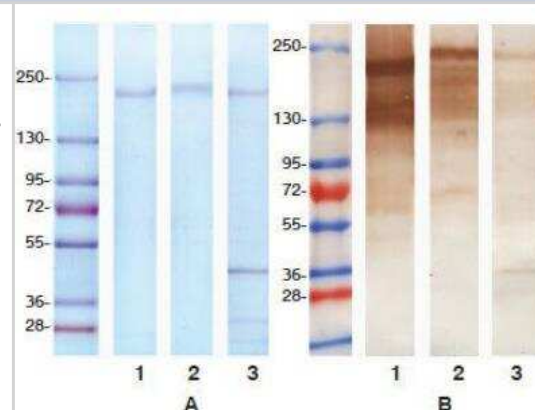


**NB200-403****Pappalysin-1/PAPP-A Antibody (3C8)**

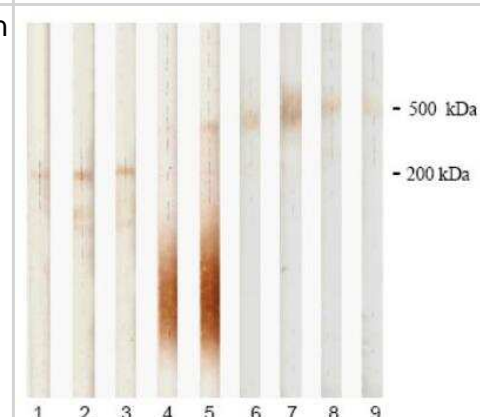
<b>Product Information</b>	
<b>Unit Size</b>	0.1 mg
<b>Concentration</b>	Concentrations vary lot to lot. See vial label for concentration. If unlisted please contact technical services.
<b>Storage</b>	Store at 4C. Do not freeze.
<b>Clonality</b>	Monoclonal
<b>Clone</b>	3C8
<b>Preservative</b>	0.09% Sodium Azide
<b>Isotype</b>	IgG2a
<b>Purity</b>	Protein A purified
<b>Buffer</b>	PBS (pH 7.4)
<b>Product Description</b>	
<b>Host</b>	Mouse
<b>Gene ID</b>	5069
<b>Gene Symbol</b>	PAPPA
<b>Species</b>	Human
<b>Reactivity Notes</b>	Cross-reacts with Human. Not yet tested in other species.
<b>Specificity/Sensitivity</b>	PAPPA (3C8)
<b>Immunogen</b>	Purified human PAPPA antigen.
<b>Product Application Details</b>	
<b>Applications</b>	Western Blot, ELISA, Immunoprecipitation, Sandwich ELISA
<b>Recommended Dilutions</b>	Western Blot 1:100-1:2000, ELISA 1:100-1:2000, Immunoprecipitation 1:10-1:500, Sandwich ELISA 1:100-1:2000
<b>Application Notes</b>	This antibody works well in htPAPP-A and dPAPP-A (PAPP-A dimer) immunoassays, Immunoprecipitation and PAPP-A immunodetection in Western blotting. Recommended pair for the detection of dPAPP-A antigen in blood of AMI patients and patients with unstable angina (capture - detection): <a href="#">NB200-401</a> (Capture) - NB200-403 (Detection). Best pair for the detection of htPAPP-A antigen in pregnancy serum (capture - detection): <a href="#">NB200-401</a> (Capture) - NB200-403 (Detection)

## Images

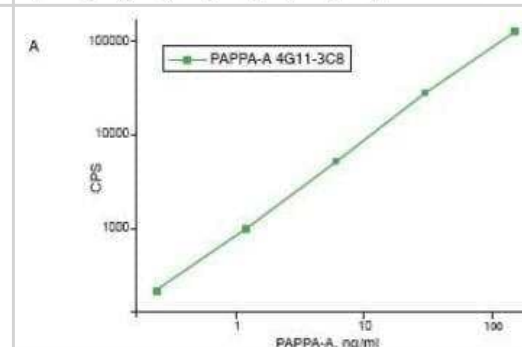
Western Blot: PAPP A Antibody (3C8) [NB200-403] - Figure A - SDS-PAGE analysis in reducing conditions of human recombinant dPAPP-A and tissue (purified from atherosclerotic plaques) dPAPP-A. Lane 1: human htPAPP-A Lane 2: recombinant dPAPP-A Lane 3: tissue dPAPP-A Gel staining: Coomassie brilliant blue R-250 Comments: proMBP subunit released from htPAPP-A upon reduction is not stained by Coomassie brilliant blue because of high degree of glycosylation. Figure B - Western blotting analysis of PAPP-A purified from atherosclerotic tissue. For immunostaining mixture of anti-PAPP-A MAbs 18A10 (Cat # NB100-73059), 7A6 (Cat # NB100-73060) and 3C8 (Cat # NB200-403) Lanes are noted as in Figure A.



Western Blot: PAPP A Antibody (3C8) [NB200-403] - Detection of human PAPP-A and proMBP subunits of htPAPP-A by monoclonal antibodies in Western blotting. Lane 1: 18A10 (NB100-73059) Lane 2: 7A6 (NB100-73060) Lane 3: 3C8 (NB200-402) Lane 4: 5H9 (proMBP-specific) (NB110-8423) Lane 5: 11E4 (proMBP-specific) (NB120-14597) Lane 6: 7A6 (NB100-73060) Lane 7: 10A5 (NB200-402) Lane 8: 3C8 (NB200-403) Lane 9: 10E1 (NB120-8346) Lanes 1-5: after SDS-PAGE in reduction conditions. Lanes 6-9: Non-reducing conditions. Heterotetrameric complex was detected by anti-PAPP-A MAbs



Sandwich ELISA: PAPP A Antibody (3C8) [NB200-403] - Calibration curves for PAPP-A sandwich immunoassay. (A) 4G11 3C8 Capture Mab: 4G11 (biotinylated) Detection MAbs: 3C8 (labeled with stable Eu3+ - chelate) Antigen: htPAPP-A





### **Novus Biologicals USA**

10730 E. Briarwood Avenue  
Centennial, CO 80112  
USA  
Phone: 303.730.1950  
Toll Free: 1.888.506.6887  
Fax: 303.730.1966  
nb-customerservice@bio-techne.com

### **Bio-Techne Canada**

21 Canmotor Ave  
Toronto, ON M8Z 4E6  
Canada  
Phone: 905.827.6400  
Toll Free: 855.668.8722  
Fax: 905.827.6402  
canada.inquires@bio-techne.com

### **Bio-Techne Ltd**

19 Barton Lane  
Abingdon Science Park  
Abingdon, OX14 3NB, United Kingdom  
Phone: (44) (0) 1235 529449  
Free Phone: 0800 37 34 15  
Fax: (44) (0) 1235 533420  
info.EMEA@bio-techne.com

### **General Contact Information**

[www.novusbio.com](http://www.novusbio.com)  
Technical Support: [nb-technical@bio-techne.com](mailto:nb-technical@bio-techne.com)  
Orders: [nb-customerservice@bio-techne.com](mailto:nb-customerservice@bio-techne.com)  
General: [novus@novusbio.com](mailto:novus@novusbio.com)

### **Limitations**

This product is for research use only and is not approved for use in humans or in clinical diagnosis. Primary Antibodies are guaranteed for 1 year from date of receipt.

For more information on our 100% guarantee, please visit [www.novusbio.com/guarantee](http://www.novusbio.com/guarantee)

Earn gift cards/discounts by submitting a review: [www.novusbio.com/reviews/submit/NB200-403](http://www.novusbio.com/reviews/submit/NB200-403)

Earn gift cards/discounts by submitting a publication using this product:  
[www.novusbio.com/publications](http://www.novusbio.com/publications)

