

Product Datasheet

Enolase 2/Neuron-specific Enolase Antibody NB120-834-0.5ml

Unit Size: 0.5 ml

Store at 4C.

www.novusbio.com



technical@novusbio.com

Protocols, Publications, Related Products, Reviews, Research Tools and Images at:
www.novusbio.com/NB120-834

Updated 5/16/2023 v.20.1

Earn rewards for product
reviews and publications.

Submit a publication at www.novusbio.com/publications

Submit a review at www.novusbio.com/reviews/destination/NB120-834



NB120-834-0.5ml**Enolase 2/Neuron-specific Enolase Antibody**

Product Information	
Unit Size	0.5 ml
Concentration	Please see the vial label for concentration. If unlisted please contact technical services.
Storage	Store at 4C.
Clonality	Polyclonal
Preservative	0.05% Sodium Azide
Isotype	IgG
Purity	Whole Antiserum
Buffer	Whole Antiserum

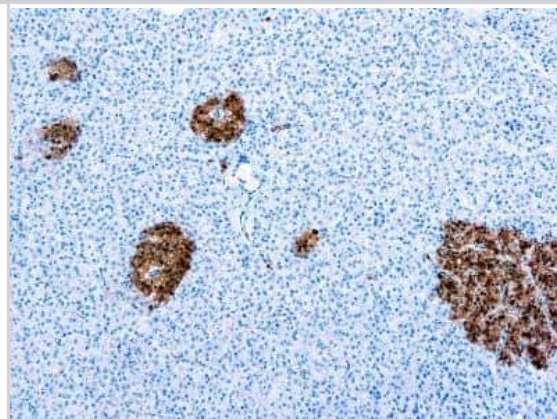
Product Description	
Host	Rabbit
Gene ID	2026
Gene Symbol	ENO2
Species	Human, Bovine
Marker	Neuronal Marker
Specificity/Sensitivity	This antibody reacts with human isoenzymes of neuron specific enolase containing gamma subunits. It gives a specific staining in neurons of the brain, islets of Langerhans in pancreas, and in peripheral nerves of the skin. No staining with other tissue types has been seen.
Immunogen	Neuron specific enolase (gamma-gamma isoenzyme) isolated from bovine brain.
Notes	This product is available in a small concentrated size as well as a larger pre-dilute size. The larger can be used neat without further dilution.

Product Application Details	
Applications	Immunohistochemistry, Immunohistochemistry-Frozen, Immunohistochemistry-Paraffin
Recommended Dilutions	Immunohistochemistry 1:10-1:500, Immunohistochemistry-Paraffin 1:10-1:500, Immunohistochemistry-Frozen 1:10-1:500
Application Notes	IHC-P: recommended pretreatment of citrate buffer, pH 6.0. Recommended incubation time of 30 min at RT.

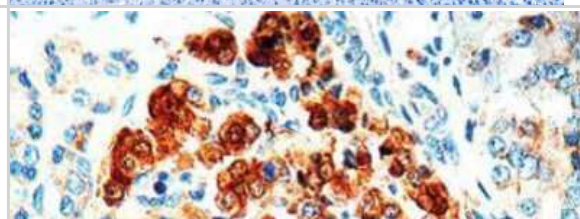


Images

Immunohistochemistry-Paraffin: Enolase 2/Neuron-specific Enolase Antibody [NB120-834] - Formalin fixed paraffin embedded human pancreas stained with Enolase 2/Neuron-specific Enolase antibody (NB120-834).



Immunohistochemistry-Paraffin: Enolase 2/Neuron-specific Enolase Antibody [NB120-834] - Staining of Human pancreas





Novus Biologicals USA

10730 E. Briarwood Avenue
Centennial, CO 80112
USA
Phone: 303.730.1950
Toll Free: 1.888.506.6887
Fax: 303.730.1966
nb-customerservice@bio-techne.com

Bio-Techne Canada

21 Canmotor Ave
Toronto, ON M8Z 4E6
Canada
Phone: 905.827.6400
Toll Free: 855.668.8722
Fax: 905.827.6402
canada.inquires@bio-techne.com

Bio-Techne Ltd

19 Barton Lane
Abingdon Science Park
Abingdon, OX14 3NB, United Kingdom
Phone: (44) (0) 1235 529449
Free Phone: 0800 37 34 15
Fax: (44) (0) 1235 533420
info.EMEA@bio-techne.com

General Contact Information

www.novusbio.com
Technical Support: nb-technical@bio-
techne.com
Orders: nb-customerservice@bio-techne.com
General: novus@novusbio.com

Limitations

This product is for research use only and is not approved for use in humans or in clinical diagnosis.
Primary Antibodies are guaranteed for 1 year from date of receipt.

For more information on our 100% guarantee, please visit www.novusbio.com/guarantee

Earn gift cards/discounts by submitting a review: www.novusbio.com/reviews/submit/NB120-834

Earn gift cards/discounts by submitting a publication using this product:
www.novusbio.com/publications

