

# Product Datasheet

## Dystrophin Antibody (MANDRA1) NB120-7164

Unit Size: 0.1 ml

Store at 4C short term. Aliquot and store at -20C long term. Avoid freeze-thaw cycles.

[www.novusbio.com](http://www.novusbio.com)



[technical@novusbio.com](mailto:technical@novusbio.com)

### Publications: 4

Protocols, Publications, Related Products, Reviews, Research Tools and Images at:  
[www.novusbio.com/NB120-7164](http://www.novusbio.com/NB120-7164)

Updated 7/28/2024 v.20.1

Earn rewards for product  
reviews and publications.

Submit a publication at [www.novusbio.com/publications](http://www.novusbio.com/publications)

Submit a review at [www.novusbio.com/reviews/destination/NB120-7164](http://www.novusbio.com/reviews/destination/NB120-7164)



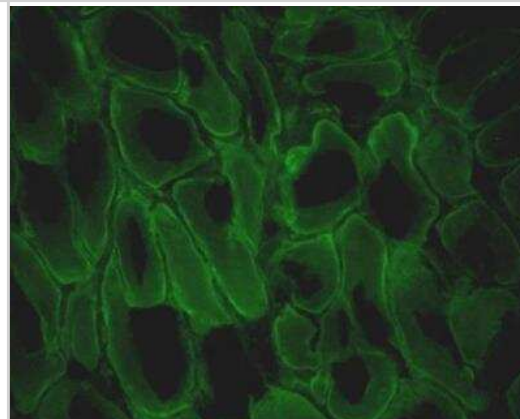
**NB120-7164****Dystrophin Antibody (MANDRA1)**

<b>Product Information</b>	
<b>Unit Size</b>	0.1 ml
<b>Concentration</b>	This product is unpurified. The exact concentration of antibody is not quantifiable.
<b>Storage</b>	Store at 4C short term. Aliquot and store at -20C long term. Avoid freeze-thaw cycles.
<b>Clonality</b>	Monoclonal
<b>Clone</b>	MANDRA1
<b>Preservative</b>	0.9% Sodium Azide
<b>Isotype</b>	IgG1
<b>Purity</b>	Unpurified
<b>Buffer</b>	Ascites
<b>Product Description</b>	
<b>Host</b>	Mouse
<b>Gene ID</b>	1756
<b>Gene Symbol</b>	DMD
<b>Species</b>	Human, Mouse, Rat, Fish
<b>Reactivity Notes</b>	Please note that this antibody is reactive to Mouse and derived from the same host, Mouse. Additional Mouse on Mouse blocking steps may be required for IHC and ICC experiments. Please contact Technical Support for more information.
<b>Specificity/Sensitivity</b>	The antibody recognizes an epitope located on the 128 amino acids at the end of the C-terminal domain of the human dystrophin molecule (amino acid residues 3558-3684).
<b>Immunogen</b>	Fusion protein, corresponding to amino acids 3200-3684 of Human Dystrophin.
<b>Product Application Details</b>	
<b>Applications</b>	ELISA, Immunocytochemistry/ Immunofluorescence, Immunohistochemistry, Immunohistochemistry-Frozen, Microarray
<b>Recommended Dilutions</b>	ELISA 1:100-1:2000, Immunohistochemistry, Immunocytochemistry/ Immunofluorescence 1:100, Immunohistochemistry-Frozen 1:10-1:500, Microarray
<b>Application Notes</b>	ELISA: See Nyugen thi Man et al (1992) and Morris G.E et al (1993) IF: Use freshly dissected and frozen human or animal muscle tissue. Immunohistochemical staining of muscle tissue results in a clear labeling confined to the periphery (plasma membrane) of normal striated muscle fibers.



## Images

Immunohistochemistry-Frozen: Dystrophin Antibody (MANDRA1) [NB120-7164] - Staining of frozen human tongue sections with 1:100 Monoclonal Anti-Dystrophin, Clone: MANDRA1 using Goat Anti-Mouse IgG, FITC-conjugate.



## Publications

Stay TL, Miterko LN, Arancillo M et al. In vivo cerebellar circuit function is disrupted in an mdx mouse model of Duchenne muscular dystrophy Dis Model Mech 2019-11-08 [PMID: 31704708] (IF/IHC, Mouse)

Annese T, Corsi P, Ruggieri S et al. Isolation and characterization of neural stem cells from dystrophic mdx mouse. Exp. Cell Res. 2016-03-22 [PMID: 27015747] (ICC/IF, Mouse)

Morris GE, Ellis JM, Nguyen TM et al. A quantitative ELISA for dystrophin. J Immunol Methods. 1993-05-01 [PMID: 8486926]

Nguyen TM, Ginjaar IB, van Ommen GJ et al. Monoclonal antibodies for dystrophin analysis. Epitope mapping and improved binding to SDS-treated muscle sections. Biochem J. 1992-12-01 [PMID: 1281410]



### **Novus Biologicals USA**

10730 E. Briarwood Avenue  
Centennial, CO 80112  
USA  
Phone: 303.730.1950  
Toll Free: 1.888.506.6887  
Fax: 303.730.1966  
nb-customerservice@bio-techne.com

### **Bio-Techne Canada**

21 Canmotor Ave  
Toronto, ON M8Z 4E6  
Canada  
Phone: 905.827.6400  
Toll Free: 855.668.8722  
Fax: 905.827.6402  
canada.inquires@bio-techne.com

### **Bio-Techne Ltd**

19 Barton Lane  
Abingdon Science Park  
Abingdon, OX14 3NB, United Kingdom  
Phone: (44) (0) 1235 529449  
Free Phone: 0800 37 34 15  
Fax: (44) (0) 1235 533420  
info.EMEA@bio-techne.com

### **General Contact Information**

[www.novusbio.com](http://www.novusbio.com)  
Technical Support: nb-technical@bio-techne.com  
Orders: nb-customerservice@bio-techne.com  
General: novus@novusbio.com

### **Limitations**

This product is for research use only and is not approved for use in humans or in clinical diagnosis. Primary Antibodies are guaranteed for 1 year from date of receipt.

For more information on our 100% guarantee, please visit [www.novusbio.com/guarantee](http://www.novusbio.com/guarantee)

Earn gift cards/discounts by submitting a review: [www.novusbio.com/reviews/submit/NB120-7164](http://www.novusbio.com/reviews/submit/NB120-7164)

Earn gift cards/discounts by submitting a publication using this product:  
[www.novusbio.com/publications](http://www.novusbio.com/publications)

