

# Product Datasheet

## Sheep anti-Mouse IgG (H+L) Secondary Antibody [Alkaline Phosphatase] NB120-6809

Unit Size: 0.5 mg

Store at 4C. Do not freeze.

[www.novusbio.com](http://www.novusbio.com)



[technical@novusbio.com](mailto:technical@novusbio.com)

Protocols, Publications, Related Products, Reviews, Research Tools and Images at:  
[www.novusbio.com/NB120-6809](http://www.novusbio.com/NB120-6809)

Updated 10/23/2024 v.20.1

Earn rewards for product  
reviews and publications.

Submit a publication at [www.novusbio.com/publications](http://www.novusbio.com/publications)

Submit a review at [www.novusbio.com/reviews/destination/NB120-6809](http://www.novusbio.com/reviews/destination/NB120-6809)



**NB120-6809**

Sheep anti-Mouse IgG (H+L) Secondary Antibody [Alkaline Phosphatase]

Product Information	
Unit Size	0.5 mg
Concentration	Please see the vial label for concentration. If unlisted please contact technical services.
Storage	Store at 4C. Do not freeze.
Clonality	Polyclonal
Preservative	0.01% Sodium Azide
Isotype	IgG
Conjugate	Alkaline Phosphatase
Purity	Multi-step
Buffer	0.05 M Tris Chloride, 0.15M Sodium Chloride, 0.001M Magnesium Chloride, 0.0001M Zinc Chloride, 50% (v/v) Glycerol; pH 8.0, 10 mg/mL Bovine Serum Albumin (BSA) - Immunoglobulin and Protease free
Product Description	
Description	<p>Store vial at 4C before opening. DO NOT FREEZE. This product is stable at 4C as an undiluted liquid. Dilute only prior to immediate use. Freezing alkaline phosphatase conjugates will result in a substantial loss of enzymatic activity.</p> <p>This product was prepared from monospecific antiserum by immunoaffinity chromatography using Mouse IgG coupled to agarose beads followed by solid phase adsorption(s) to remove any unwanted reactivities. Assay by immunoelectrophoresis resulted in a single precipitin arc against anti-Alkaline Phosphatase (calf intestine), anti-Sheep Serum, Mouse IgG and Mouse Serum.</p>
Host	Sheep
Species	Mouse
Immunogen	Mouse IgG whole molecule
Product Application Details	
Applications	Western Blot, Dot Blot, ELISA, Immunocytochemistry/ Immunofluorescence, Immunohistochemistry, Immunohistochemistry-Paraffin
Recommended Dilutions	Western Blot 1:500 - 1:2500, ELISA 1:2000 - 1:10000, Immunohistochemistry 1:200 - 1:1000, Immunocytochemistry/ Immunofluorescence 0.25-2 ug/ml, Immunohistochemistry-Paraffin 1:50-1:200, Dot Blot
Application Notes	This product has been tested by ELISA and dot blot and is assayed against 1.0 ug of Mouse IgG in a standard capture ELISA using pNPP p-nitrophenyl phosphate as a substrate for 30 minutes at room temperature. A working dilution of 1:1,000 to 1:5,000 of the reconstitution concentration is suggested for this product.



## Images

Dot Blot: Sheep anti-Mouse IgG (H+L) Secondary Antibody [Alkaline Phosphatase] [NB120-6809] - Dot Blot of Sheep anti-Mouse IgG (H+L) Secondary Antibody [Alkaline Phosphatase].

Antigen: Mouse IgG.

Load: Lane 1 - 200 ng Lane 2 - 66.67 ng Lane 3 - 22.22 ng Lane 4 - 7.41 ng Lane 5 - 2.47 ng.

Primary antibody: none.

Secondary antibody: Sheep anti-Mouse IgG (H+L) Secondary Antibody [Alkaline Phosphatase] at 1:1000 for 60 min at RT.

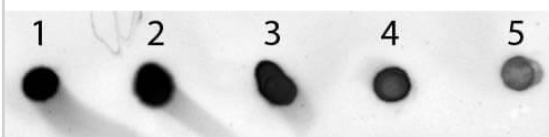
Block: Fluorescent blocking buffer for 60 min at RT.

Reaction visualized using alkaline phosphatase substrate for 30 seconds at RT.



Dot Blot of Sheep anti-Mouse IgG Antibody Alkaline Phosphatase Conjugated. Antigen: Mouse IgG. Load: Lane 1 - 200 ng Lane 2 - 66.67 ng Lane 3 - 22.22 ng Lane 4 - 7.41 ng Lane 5 - 2.47 ng. Primary antibody: none. Secondary antibody: Sheep anti-Sheep anti-Mouse IgG (H+L) Secondary Antibody [Alkaline Phosphatase] at 1:1,000 for 60 min at RT. Block for 60 min at RT. Reaction visualized using alkaline phosphatase substrate (NBT-100) for 30 seconds at RT.

Reaction visualized using alkaline phosphatase substrate (NBT-100) for 30 seconds at RT.





### **Novus Biologicals USA**

10730 E. Briarwood Avenue  
Centennial, CO 80112  
USA  
Phone: 303.730.1950  
Toll Free: 1.888.506.6887  
Fax: 303.730.1966  
nb-customerservice@bio-techne.com

### **Bio-Techne Canada**

21 Canmotor Ave  
Toronto, ON M8Z 4E6  
Canada  
Phone: 905.827.6400  
Toll Free: 855.668.8722  
Fax: 905.827.6402  
canada.inquires@bio-techne.com

### **Bio-Techne Ltd**

19 Barton Lane  
Abingdon Science Park  
Abingdon, OX14 3NB, United Kingdom  
Phone: (44) (0) 1235 529449  
Free Phone: 0800 37 34 15  
Fax: (44) (0) 1235 533420  
info.EMEA@bio-techne.com

### **General Contact Information**

www.novusbio.com  
Technical Support: nb-technical@bio-  
techne.com  
Orders: nb-customerservice@bio-techne.com  
General: novus@novusbio.com

### **Limitations**

This product is for research use only and is not approved for use in humans or in clinical diagnosis. Secondary Antibodies are guaranteed for 1 year from date of receipt.

For more information on our 100% guarantee, please visit [www.novusbio.com/guarantee](http://www.novusbio.com/guarantee)

Earn gift cards/discounts by submitting a review: [www.novusbio.com/reviews/submit/NB120-6809](http://www.novusbio.com/reviews/submit/NB120-6809)

Earn gift cards/discounts by submitting a publication using this product:  
[www.novusbio.com/publications](http://www.novusbio.com/publications)

