

# Product Datasheet

## Rabbit anti-Human IgG (H+L) Secondary Antibody [Biotin] NB120-6758

Unit Size: 1 mg

Store at 4C short term. Aliquot and store at -20C long term. Avoid freeze-thaw cycles.

[www.novusbio.com](http://www.novusbio.com)



[technical@novusbio.com](mailto:technical@novusbio.com)

### Publications: 1

Protocols, Publications, Related Products, Reviews, Research Tools and Images at:  
[www.novusbio.com/NB120-6758](http://www.novusbio.com/NB120-6758)

Updated 10/23/2024 v.20.1

Earn rewards for product  
reviews and publications.

Submit a publication at [www.novusbio.com/publications](http://www.novusbio.com/publications)

Submit a review at [www.novusbio.com/reviews/destination/NB120-6758](http://www.novusbio.com/reviews/destination/NB120-6758)



**NB120-6758**

Rabbit anti-Human IgG (H+L) Secondary Antibody [Biotin]

Product Information	
Unit Size	1 mg
Concentration	Please see the vial label for concentration. If unlisted please contact technical services.
Storage	Store at 4C short term. Aliquot and store at -20C long term. Avoid freeze-thaw cycles.
Clonality	Polyclonal
Preservative	0.01% Sodium Azide
Isotype	IgG
Conjugate	Biotin
Purity	Multi-step
Buffer	0.02 M Potassium Phosphate, 0.15 M Sodium Chloride, pH 7.2, 10 mg/mL Bovine Serum Albumin (BSA) - Immunoglobulin and Protease free

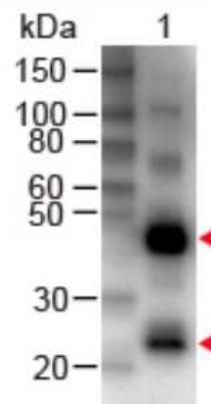
Product Description	
Description	<p>For extended storage aliquot contents and freeze at -20C or below. Avoid cycles of freezing and thawing. Centrifuge product if not completely clear after standing at room</p> <p>This product was prepared from monospecific antiserum by immunoaffinity chromatography using Human IgG coupled to agarose beads followed by solid phase adsorption(s) to remove any unwanted reactivities. Assay by immunoelectrophoresis resulted in a single precipitin arc against anti-biotin, anti-Rabbit Serum, Human IgG and Human Serum.</p>
Host	Rabbit
Species	Human
Immunogen	Human IgG whole molecule

Product Application Details	
Applications	Western Blot, ELISA, Immunohistochemistry, Peptide ELISA
Recommended Dilutions	Western Blot 1:2000 - 1:10000, ELISA 1:20000 - 1:100000, Immunohistochemistry 1:1000 - 1:5000, Peptide ELISA
Application Notes	<p>This product has been tested by western blot and ELISA and has been assayed against 1.0 ug of Human IgG in a standard capture ELISA using Peroxidase Conjugated Streptavidin and ABTS (2,2'-azino-bis-[3-ethylbenthiiazoline-6-sulfonic acid]) as a substrate for 30 minutes at room temperature. A working dilution of 1:50,000 to 1:220,000 of the reconstitution concentration is suggested for this product.</p> <p>Use in Peptide ELISA was reported in the scientific literature (PMID: 22720696).</p>



## Images

Western Blot: Rabbit anti-Human IgG (H+L) Secondary Antibody [Biotin] [NB120-6758] - Lane 1: Human IgG Load: 50 ng per lane Primary antibody: Human IgG (H&L) Antibody Biotin Conjugated at 1:1000 for 60 min RT Secondary antibody: HRP Conjugated Streptavidin at 1:40,000 for 30 min at RT Block: incubated with blocking buffer for 30 min at RT



## Publications

Kukreja M, Johnston SA, Stafford P. Comparative study of classification algorithms for immunosignaturing data BMC Bioinformatics 2012-06-23 [PMID: 22720696] (PEP-ELISA)



### **Novus Biologicals USA**

10730 E. Briarwood Avenue  
Centennial, CO 80112  
USA  
Phone: 303.730.1950  
Toll Free: 1.888.506.6887  
Fax: 303.730.1966  
nb-customerservice@bio-techne.com

### **Bio-Techne Canada**

21 Canmotor Ave  
Toronto, ON M8Z 4E6  
Canada  
Phone: 905.827.6400  
Toll Free: 855.668.8722  
Fax: 905.827.6402  
canada.inquires@bio-techne.com

### **Bio-Techne Ltd**

19 Barton Lane  
Abingdon Science Park  
Abingdon, OX14 3NB, United Kingdom  
Phone: (44) (0) 1235 529449  
Free Phone: 0800 37 34 15  
Fax: (44) (0) 1235 533420  
info.EMEA@bio-techne.com

### **General Contact Information**

www.novusbio.com  
Technical Support: nb-technical@bio-  
techne.com  
Orders: nb-customerservice@bio-techne.com  
General: novus@novusbio.com

### **Products Related to NB120-6758**

---

NBP2-29370	Streptavidin Native Protein
------------	-----------------------------

---

### **Limitations**

This product is for research use only and is not approved for use in humans or in clinical diagnosis. Secondary Antibodies are guaranteed for 1 year from date of receipt.

For more information on our 100% guarantee, please visit [www.novusbio.com/guarantee](http://www.novusbio.com/guarantee)

Earn gift cards/discounts by submitting a review: [www.novusbio.com/reviews/submit/NB120-6758](http://www.novusbio.com/reviews/submit/NB120-6758)

Earn gift cards/discounts by submitting a publication using this product:  
[www.novusbio.com/publications](http://www.novusbio.com/publications)

