

Product Datasheet

PDE6 beta Antibody NB120-5663

Unit Size: 100ug

Store at -20C. Avoid freeze-thaw cycles.

www.novusbio.com



technical@novusbio.com

Reviews: 1 Publications: 2

Protocols, Publications, Related Products, Reviews, Research Tools and Images at:
www.novusbio.com/NB120-5663

Updated 10/23/2024 v.20.1

**Earn rewards for product
reviews and publications.**

Submit a publication at www.novusbio.com/publications

Submit a review at www.novusbio.com/reviews/destination/NB120-5663



NB120-5663

PDE6 beta Antibody

Product Information	
Unit Size	100ug
Concentration	1 mg/ml
Storage	Store at -20C. Avoid freeze-thaw cycles.
Clonality	Polyclonal
Preservative	0.05% Sodium Azide
Isotype	IgG
Purity	Immunogen affinity purified
Buffer	PBS with 1 mg/ml BSA

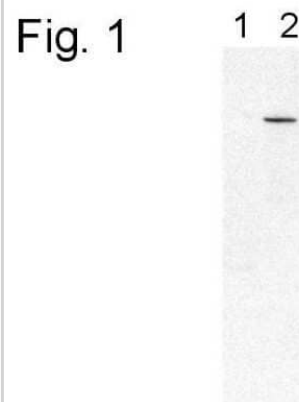
Product Description	
Host	Rabbit
Gene ID	5158
Gene Symbol	PDE6B
Species	Human, Mouse, Bovine, Canine, Monkey
Reactivity Notes	Use in Monkey reported in scientific literature (PMID:35024589) .
Specificity/Sensitivity	Detects PDE6B from mouse retinal extracts.
Immunogen	Synthetic Peptides: H(20) Q Y F G (K/R) K L S P E N V A G A C(36)

Product Application Details	
Applications	Western Blot, Immunocytochemistry/ Immunofluorescence, Immunohistochemistry, Immunohistochemistry-Frozen, Immunohistochemistry-Paraffin
Recommended Dilutions	Western Blot 2 ug/ml, Immunohistochemistry 1:10 - 1:500, Immunocytochemistry/ Immunofluorescence 1:10 - 1:500, Immunohistochemistry-Paraffin 1:10 - 1:500, Immunohistochemistry-Frozen 1:10 - 1:500
Application Notes	WB: Detects an approx. 90 kDa protein.

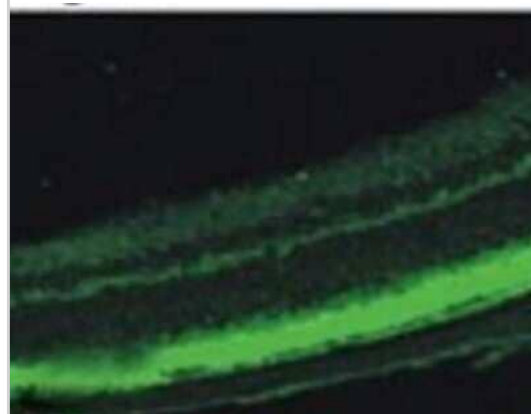


Images

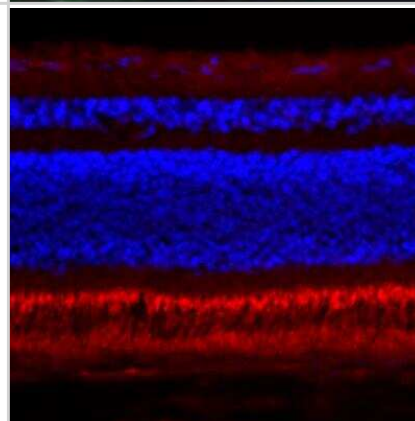
Western Blot: PDE6 beta Antibody [NB120-5663] - Analysis of PDE6 beta. Lane 1 demonstrates no detection on extracts of RD mice. Lane 2 shows a single band at ~90 kDa on Balb/C extracts.



Immunocytochemistry/Immunofluorescence: PDE6 beta Antibody [NB120-5663] - Mouse retina outer segments.



Immunohistochemistry-Frozen: PDE6 beta Antibody [NB120-5663] - Specific labeling of the photoreceptor outer segments with minimal background. Image from verified customer review.



Publications

Yamasaki S, Tu H, Matsuyama T et al. A Genetic modification that reduces ON-bipolar cells in hESC-derived retinas enhances functional integration after transplantation iScience 2022-01-01 [PMID: 35024589] (IHC-Fr, Monkey)

Dong H, Claffey KP, Brocke S, Epstein PM. Expression of phosphodiesterase 6 (PDE6) in human breast cancer cells. Springerplus 2013-01-01 [PMID: 24683528] (Human)



Novus Biologicals USA

10730 E. Briarwood Avenue
Centennial, CO 80112
USA
Phone: 303.730.1950
Toll Free: 1.888.506.6887
Fax: 303.730.1966
nb-customerservice@bio-techne.com

Bio-Techne Canada

21 Canmotor Ave
Toronto, ON M8Z 4E6
Canada
Phone: 905.827.6400
Toll Free: 855.668.8722
Fax: 905.827.6402
canada.inquires@bio-techne.com

Bio-Techne Ltd

19 Barton Lane
Abingdon Science Park
Abingdon, OX14 3NB, United Kingdom
Phone: (44) (0) 1235 529449
Free Phone: 0800 37 34 15
Fax: (44) (0) 1235 533420
info.EMEA@bio-techne.com

General Contact Information

www.novusbio.com
Technical Support: nb-technical@bio-
techne.com
Orders: nb-customerservice@bio-techne.com
General: novus@novusbio.com

Products Related to NB120-5663

HAF008	Goat anti-Rabbit IgG Secondary Antibody [HRP]
NB7160	Goat anti-Rabbit IgG (H+L) Secondary Antibody [HRP]
NBP2-24891	Rabbit IgG Isotype Control
NBP2-56205PEP	PDE6 beta Recombinant Protein Antigen

Limitations

This product is for research use only and is not approved for use in humans or in clinical diagnosis. Primary Antibodies are guaranteed for 1 year from date of receipt.

For more information on our 100% guarantee, please visit www.novusbio.com/guarantee

Earn gift cards/discounts by submitting a review: www.novusbio.com/reviews/submit/NB120-5663

Earn gift cards/discounts by submitting a publication using this product:
www.novusbio.com/publications

