

# Product Datasheet

## Rab11A Antibody NB120-3612

Unit Size: 200ug

Store at -20C. Avoid freeze-thaw cycles.

[www.novusbio.com](http://www.novusbio.com)



[technical@novusbio.com](mailto:technical@novusbio.com)

Protocols, Publications, Related Products, Reviews, Research Tools and Images at:  
[www.novusbio.com/NB120-3612](http://www.novusbio.com/NB120-3612)

Updated 5/15/2025 v.20.1

Earn rewards for product  
reviews and publications.

Submit a publication at [www.novusbio.com/publications](http://www.novusbio.com/publications)

Submit a review at [www.novusbio.com/reviews/destination/NB120-3612](http://www.novusbio.com/reviews/destination/NB120-3612)



**NB120-3612****Rab11A Antibody**

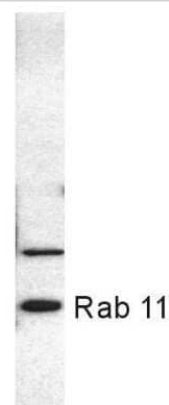
Product Information	
Unit Size	200ug
Concentration	1 mg/ml
Storage	Store at -20C. Avoid freeze-thaw cycles.
Clonality	Polyclonal
Preservative	0.05% Sodium Azide
Isotype	IgG
Purity	Immunogen affinity purified
Buffer	PBS with 1 mg/ml BSA

Product Description	
Host	Rabbit
Gene ID	8766
Gene Symbol	RAB11A
Species	Human, Porcine, Canine, Primate
Reactivity Notes	Expected cross-reactivity with Rat and Mouse base on sequence identity.
Marker	Recycling Endosome Marker
Specificity/Sensitivity	NB120-3612 detects Rab 11 from human and non-human primate samples.
Immunogen	Synthetic peptide corresponding to residues M(1) G T R D D E Y D Y L F K V V L I C(17) of human Rab11.

Product Application Details	
Applications	Western Blot
Recommended Dilutions	Western Blot 6.6 ug/ml
Application Notes	WB: Detects an approx. 22 kDa protein representing Rab 11 in CV1, PC3, and HeLa cell extract. Another less prominent, unknown band is also detected by this antibody at approx. 35 kDa.

**Images**

Western Blot: Rab11A Antibody [NB120-3612] - Analysis of PC3 cell extract.

**Fig. 1**



### **Novus Biologicals USA**

10730 E. Briarwood Avenue  
Centennial, CO 80112  
USA  
Phone: 303.730.1950  
Toll Free: 1.888.506.6887  
Fax: 303.730.1966  
nb-customerservice@bio-techne.com

### **Bio-Techne Canada**

21 Canmotor Ave  
Toronto, ON M8Z 4E6  
Canada  
Phone: 905.827.6400  
Toll Free: 855.668.8722  
Fax: 905.827.6402  
canada.inquires@bio-techne.com

### **Bio-Techne Ltd**

19 Barton Lane  
Abingdon Science Park  
Abingdon, OX14 3NB, United Kingdom  
Phone: (44) (0) 1235 529449  
Free Phone: 0800 37 34 15  
Fax: (44) (0) 1235 533420  
info.EMEA@bio-techne.com

### **General Contact Information**

[www.novusbio.com](http://www.novusbio.com)  
Technical Support: [nb-technical@bio-techne.com](mailto:nb-technical@bio-techne.com)  
Orders: [nb-customerservice@bio-techne.com](mailto:nb-customerservice@bio-techne.com)  
General: [novus@novusbio.com](mailto:novus@novusbio.com)

### **Limitations**

This product is for research use only and is not approved for use in humans or in clinical diagnosis. Primary Antibodies are guaranteed for 1 year from date of receipt.

For more information on our 100% guarantee, please visit [www.novusbio.com/guarantee](http://www.novusbio.com/guarantee)

Earn gift cards/discounts by submitting a review: [www.novusbio.com/reviews/submit/NB120-3612](http://www.novusbio.com/reviews/submit/NB120-3612)

Earn gift cards/discounts by submitting a publication using this product:  
[www.novusbio.com/publications](http://www.novusbio.com/publications)

