

Product Datasheet

Cyclophilin 40 Antibody NB120-3562

Unit Size: 100uL

Store at -20C. Avoid freeze-thaw cycles.

www.novusbio.com



technical@novusbio.com

Publications: 1

Protocols, Publications, Related Products, Reviews, Research Tools and Images at:
www.novusbio.com/NB120-3562

Updated 7/28/2024 v.20.1

Earn rewards for product
reviews and publications.

Submit a publication at www.novusbio.com/publications

Submit a review at www.novusbio.com/reviews/destination/NB120-3562



NB120-3562**Cyclophilin 40 Antibody**

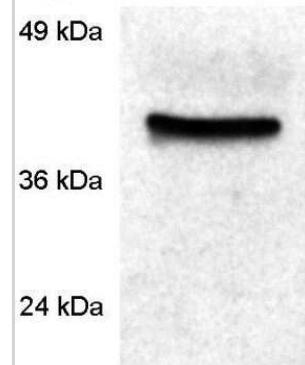
Product Information	
Unit Size	100uL
Concentration	This product is unpurified. The exact concentration of antibody is not quantifiable.
Storage	Store at -20C. Avoid freeze-thaw cycles.
Clonality	Polyclonal
Preservative	0.05% Sodium Azide
Isotype	IgG
Purity	Unpurified
Buffer	PBS with 1 mg/ml BSA
Product Description	
Host	Rabbit
Gene ID	5481
Gene Symbol	PPID
Species	Human, Mouse, Rat, Bovine, Chicken, Primate, Rabbit
Reactivity Notes	Rat reactivity reported in scientific literature (PMID: 8662874,). Chicken (9672247). Rabbit (8662874). Primate (8524246). Bovine (1544925).
Specificity/Sensitivity	Detects cyclophilin 40 (CyP 40) from human and rat tissues and cells. This does not cross-react with CyPA.
Immunogen	Synthetic peptide corresponding to residues C A(356) Q K D K E K A V Y A K M F A(370) of human Cyp-40.
Product Application Details	
Applications	Western Blot, Simple Western, Flow Cytometry, Gel Super Shift Assays, Immunocytochemistry/ Immunofluorescence, Immunohistochemistry, Immunohistochemistry-Frozen, Immunohistochemistry-Paraffin, Immunoprecipitation
Recommended Dilutions	Western Blot 1:1000, Simple Western, Flow Cytometry 1:10 - 1:1000, Immunohistochemistry 1:100, Immunocytochemistry/ Immunofluorescence 1:200, Immunoprecipitation 1:10 - 1:500, Immunohistochemistry-Paraffin 1:10-1:500, Immunohistochemistry-Frozen 1:100, Gel Super Shift Assays 1:1 - 1:100
Application Notes	WB: Detects an approx. 40 kDa protein representing CyP 40 from rat brain extract. Simple Western reported by an internal validation. Separated by Size-All; matrix was 12-180.



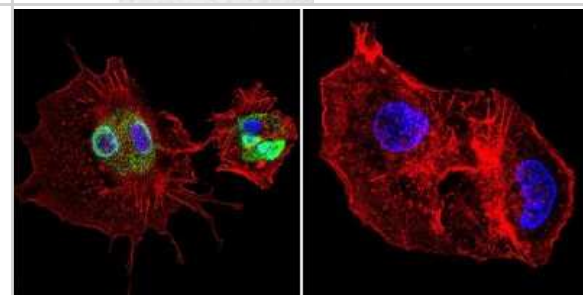
Images

Western Blot: Cyclophilin 40 Antibody [NB120-3562] - Analysis of rat spleen extracts.

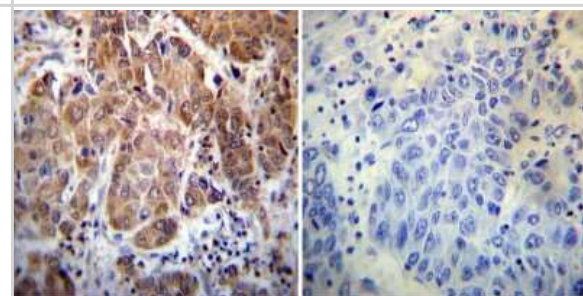
Fig. 1



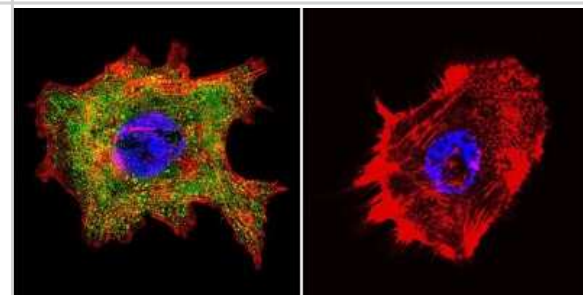
Immunocytochemistry/Immunofluorescence: Cyclophilin 40 Antibody [NB120-3562] - Analysis of Cyclophilin D in HepG2 Cells. Cells were grown on chamber slides and fixed with formaldehyde prior to staining. Cells were probed without (control) or with a Cyclophilin D polyclonal antibody at a dilution of 1:200 overnight at 4C, washed with PBS and incubated with a DyLight-488 conjugated secondary antibody. Cyclophilin D staining (green), F-Actin staining with Phalloidin (red) and nuclei with DAPI (blue) is shown.



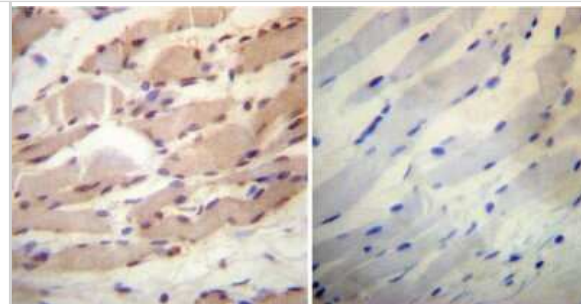
Immunohistochemistry-Paraffin: Cyclophilin 40 Antibody [NB120-3562] - Both normal and cancer biopsies of deparaffinized human Hepatocarcinoma tissue.



Immunocytochemistry/Immunofluorescence: Cyclophilin 40 Antibody [NB120-3562] - Analysis of Cyclophilin D in A431 Cells. Cells were grown on chamber slides and fixed with formaldehyde prior to staining. Cells were probed without (control) or with a Cyclophilin D polyclonal antibody at a dilution of 1:200 overnight at 4C, washed with PBS and incubated with a DyLight-488 conjugated secondary antibody. Cyclophilin D staining (green), F-Actin staining with Phalloidin (red) and nuclei with DAPI (blue) is shown.



Immunohistochemistry-Paraffin: Cyclophilin 40 Antibody [NB120-3562] - Both normal and cancer biopsies of deparaffinized human Skeletal muscle tissue.



Publications

Tombo N, Imam Aliagan AD, Feng Y et al. Cardiac Ischemia/Reperfusion Stress Reduces Inner Mitochondrial Membrane Protein (Mitofilin) Levels During Early Reperfusion Free Radic. Biol. Med. 2020-07-26 [PMID: 32726689] (WB, IP, Human)



Novus Biologicals USA

10730 E. Briarwood Avenue
Centennial, CO 80112
USA
Phone: 303.730.1950
Toll Free: 1.888.506.6887
Fax: 303.730.1966
nb-customerservice@bio-techne.com

Bio-Techne Canada

21 Canmotor Ave
Toronto, ON M8Z 4E6
Canada
Phone: 905.827.6400
Toll Free: 855.668.8722
Fax: 905.827.6402
canada.inquires@bio-techne.com

Bio-Techne Ltd

19 Barton Lane
Abingdon Science Park
Abingdon, OX14 3NB, United Kingdom
Phone: (44) (0) 1235 529449
Free Phone: 0800 37 34 15
Fax: (44) (0) 1235 533420
info.EMEA@bio-techne.com

General Contact Information

www.novusbio.com
Technical Support: nb-technical@bio-techne.com
Orders: nb-customerservice@bio-techne.com
General: novus@novusbio.com

Limitations

This product is for research use only and is not approved for use in humans or in clinical diagnosis. Primary Antibodies are guaranteed for 1 year from date of receipt.

For more information on our 100% guarantee, please visit www.novusbio.com/guarantee

Earn gift cards/discounts by submitting a review: www.novusbio.com/reviews/submit/NB120-3562

Earn gift cards/discounts by submitting a publication using this product:
www.novusbio.com/publications

