

# Product Datasheet

## Calsequestrin 1 Antibody NB120-3516

Unit Size: 100uL

Store at -20C. Avoid freeze-thaw cycles.

[www.novusbio.com](http://www.novusbio.com)



[technical@novusbio.com](mailto:technical@novusbio.com)

### Publications: 3

Protocols, Publications, Related Products, Reviews, Research Tools and Images at:  
[www.novusbio.com/NB120-3516](http://www.novusbio.com/NB120-3516)

Updated 9/1/2022 v.20.1

Earn rewards for product  
reviews and publications.

Submit a publication at [www.novusbio.com/publications](http://www.novusbio.com/publications)

Submit a review at [www.novusbio.com/reviews/destination/NB120-3516](http://www.novusbio.com/reviews/destination/NB120-3516)



**NB120-3516****Calsequestrin 1 Antibody****Product Information**

<b>Unit Size</b>	100uL
<b>Concentration</b>	This product is unpurified. The exact concentration of antibody is not quantifiable.
<b>Storage</b>	Store at -20C. Avoid freeze-thaw cycles.
<b>Clonality</b>	Polyclonal
<b>Preservative</b>	0.05% Sodium Azide
<b>Isotype</b>	IgG
<b>Purity</b>	Unpurified
<b>Buffer</b>	Whole serum diluted in PBS

**Product Description**

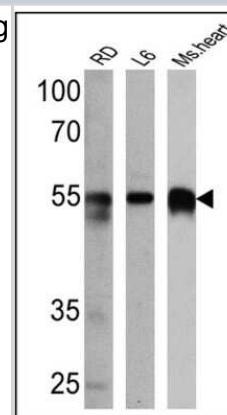
<b>Host</b>	Rabbit
<b>Gene ID</b>	844
<b>Gene Symbol</b>	CASQ1
<b>Species</b>	Human, Mouse, Rat, Canine, Sheep
<b>Specificity/Sensitivity</b>	This detects Calsequestrin. It recognizes both cardiac and skeletal muscle Calsequestrin.
<b>Immunogen</b>	Purified canine cardiac calsequestrin.

**Product Application Details**

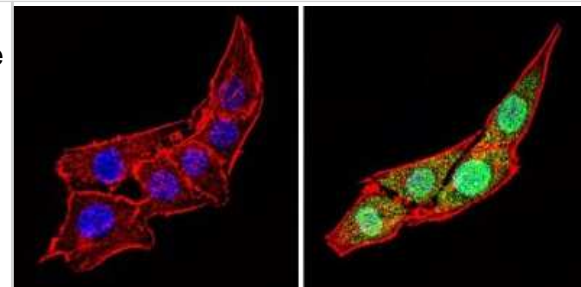
<b>Applications</b>	Western Blot, Immunocytochemistry/ Immunofluorescence, Immunohistochemistry, Immunohistochemistry-Paraffin, Immunoprecipitation
<b>Recommended Dilutions</b>	Western Blot 1:1000 - 1:10000, Immunohistochemistry 1:100 - 1:500, Immunocytochemistry/ Immunofluorescence 1:10 - 1:500, Immunoprecipitation 1:10 - 1:500, Immunohistochemistry-Paraffin 1:100 - 1:500
<b>Application Notes</b>	ICC/IF usage was reported in scientific literature. WB: Detects an approx. 55 kDa protein representing Calsequestrin from canine cardiac extract. Additional bands at 97 kDa may be observed and have been reported to be Calsequestrin-like proteins.

**Images**

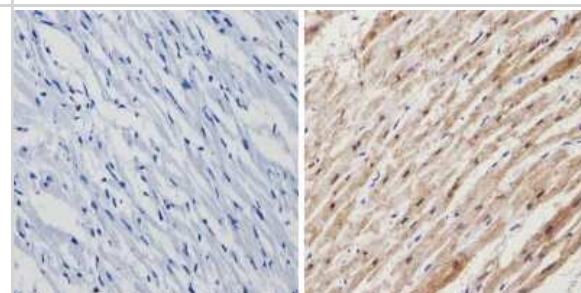
Western Blot: Calsequestrin 1 Antibody [NB120-3516] - Analysis of 25 ug of RD (Lane 1), L6 (Lane 2) and mouse heart (Lane 3) cell lysates.



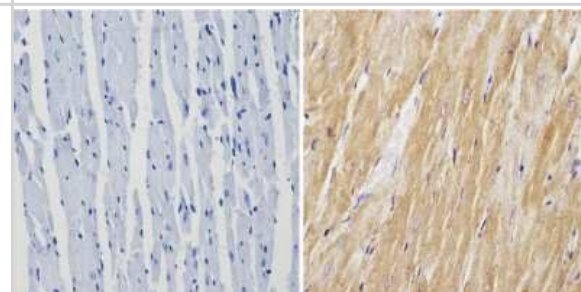
Immunocytochemistry/Immunofluorescence: Calsequestrin 1 Antibody [NB120-3516] - Analysis of Calsequestrin (green) showing staining in the cytoplasm and nucleus of C2C12 cells (right) compared to a negative control without primary antibody (left).



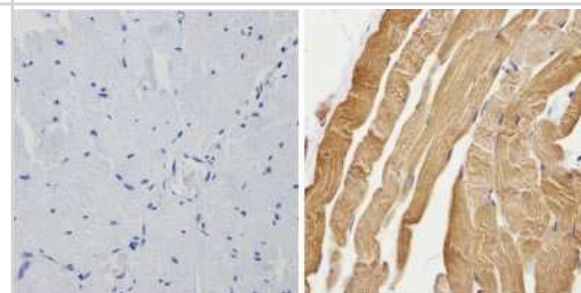
Immunohistochemistry-Paraffin: Calsequestrin 1 Antibody [NB120-3516] - Analysis showing positive staining in the cytoplasm of Human heart tissue (right) compared with a negative control in the absence of primary antibody (left).



Immunohistochemistry-Paraffin: Calsequestrin 1 Antibody [NB120-3516] - Analysis showing positive staining in the cytoplasm of paraffin-treated Mouse heart tissue (right) compared with a negative control in the absence of primary antibody (left).



Immunohistochemistry-Paraffin: Calsequestrin 1 Antibody [NB120-3516] - Analysis showing positive staining in the cytoplasm of Human skeletal muscle (right) compared with a negative control in the absence of primary antibody (left).



## Publications

Castillero E, Akashi H, Pendrak K et al. Attenuation of the Unfolded Protein Response and Endoplasmic Reticulum Stress after Mechanical Unloading in Dilated Cardiomyopathy. *Am J Physiol Heart Circ Physiol* 2015-06-08 [PMID: 26055788]

Shankar J, Messenberg A, Chan J et al. Pseudopodial actin dynamics control epithelial-mesenchymal transition in metastatic cancer cells *Cancer Res* 2010-05-01 [PMID: 20388789] (ICC/IF, Human)

Lai NC, Tang T, Gao MH et al. Improved function of the failing rat heart by regulated expression of insulin-like growth factor I via intramuscular gene transfer *Hum Gene Ther* 2012-03-01 [PMID: 22017392]





### **Novus Biologicals USA**

10730 E. Briarwood Avenue  
Centennial, CO 80112  
USA  
Phone: 303.730.1950  
Toll Free: 1.888.506.6887  
Fax: 303.730.1966  
nb-customerservice@bio-techne.com

### **Bio-Techne Canada**

21 Canmotor Ave  
Toronto, ON M8Z 4E6  
Canada  
Phone: 905.827.6400  
Toll Free: 855.668.8722  
Fax: 905.827.6402  
canada.inquires@bio-techne.com

### **Bio-Techne Ltd**

19 Barton Lane  
Abingdon Science Park  
Abingdon, OX14 3NB, United Kingdom  
Phone: (44) (0) 1235 529449  
Free Phone: 0800 37 34 15  
Fax: (44) (0) 1235 533420  
info.EMEA@bio-techne.com

### **General Contact Information**

[www.novusbio.com](http://www.novusbio.com)  
Technical Support: [nb-technical@bio-techne.com](mailto:nb-technical@bio-techne.com)  
Orders: [nb-customerservice@bio-techne.com](mailto:nb-customerservice@bio-techne.com)  
General: [novus@novusbio.com](mailto:novus@novusbio.com)

### **Limitations**

This product is for research use only and is not approved for use in humans or in clinical diagnosis. Primary Antibodies are guaranteed for 1 year from date of receipt.

For more information on our 100% guarantee, please visit [www.novusbio.com/guarantee](http://www.novusbio.com/guarantee)

Earn gift cards/discounts by submitting a review: [www.novusbio.com/reviews/submit/NB120-3516](http://www.novusbio.com/reviews/submit/NB120-3516)

Earn gift cards/discounts by submitting a publication using this product:  
[www.novusbio.com/publications](http://www.novusbio.com/publications)

