

Product Datasheet

Calpastatin Antibody (2G11D6) NB120-3515

Unit Size: 100uL

Store at -20C. Avoid freeze-thaw cycles.

www.novusbio.com



technical@novusbio.com

Protocols, Publications, Related Products, Reviews, Research Tools and Images at:
www.novusbio.com/NB120-3515

Updated 5/13/2021 v.20.1

Earn rewards for product
reviews and publications.

Submit a publication at www.novusbio.com/publications

Submit a review at www.novusbio.com/reviews/destination/NB120-3515



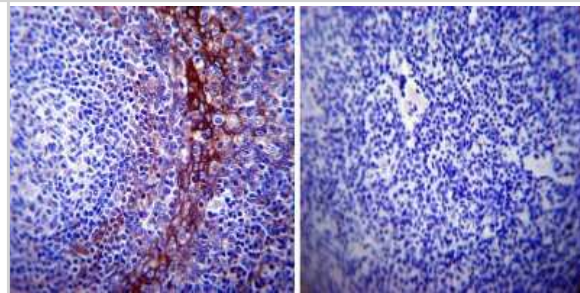
NB120-3515**Calpastatin Antibody (2G11D6)**

| Product Information | |
|------------------------------------|---|
| Unit Size | 100uL |
| Concentration | This product is unpurified. The exact concentration of antibody is not quantifiable. |
| Storage | Store at -20C. Avoid freeze-thaw cycles. |
| Clonality | Monoclonal |
| Clone | 2G11D6 |
| Preservative | 0.05% Sodium Azide |
| Isotype | IgG2a |
| Purity | Unpurified |
| Buffer | Ascites diluted with PBS |
| Product Description | |
| Host | Mouse |
| Gene ID | 831 |
| Gene Symbol | CAST |
| Species | Human, Rat, Porcine, Bovine, Canine, Fish, Rabbit |
| Reactivity Notes | Fish reactivity reported in scientific literature (PMID: 17276714). |
| Specificity/Sensitivity | Detects Calpastatin. This does not cross-react with calpains or calmodulin. |
| Immunogen | Bovine skeletal muscle calpastatin. |
| Product Application Details | |
| Applications | Western Blot, Immunohistochemistry, Immunohistochemistry-Frozen, Immunohistochemistry-Paraffin, Immunocytochemistry |
| Recommended Dilutions | Western Blot 1:5000, Immunohistochemistry 1:10 - 1:500, Immunohistochemistry-Paraffin 1:10 - 1:500, Immunohistochemistry-Frozen 1:200 - 1000, Immunocytochemistry 1:1000 |
| Application Notes | WB: Detects an approx. 150, 125, 90 and 70 kDa proteins which have been suggested to be proteins translated from different start sites of the calpastatin gene. IF: Staining of calpastatin in porcine LLC-PK1 cells results in diffuse cytoplasmic staining and weak nuclear staining. |

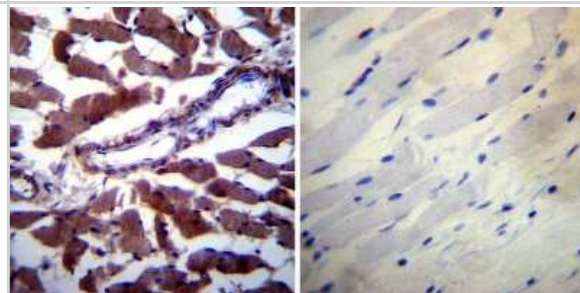


Images

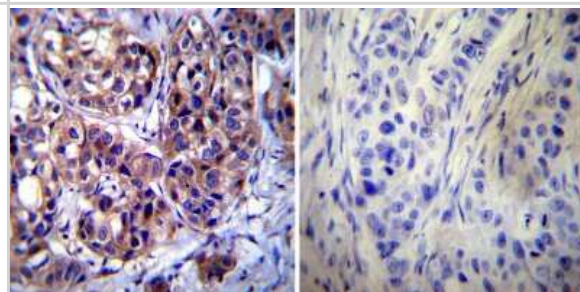
Immunohistochemistry-Paraffin: Calpastatin Antibody (2G11D6) [NB120-3515] - Normal biopsies of deparaffinized Human tonsil tissue.



Immunohistochemistry-Paraffin: Calpastatin Antibody (2G11D6) [NB120-3515] - Biopsies of deparaffinized Human skeletal muscle tissue.



Immunohistochemistry-Paraffin: Calpastatin Antibody (2G11D6) [NB120-3515] - Cancer biopsies of deparaffinized Human breast carcinoma tissue.





Novus Biologicals USA

10730 E. Briarwood Avenue
Centennial, CO 80112
USA
Phone: 303.730.1950
Toll Free: 1.888.506.6887
Fax: 303.730.1966
nb-customerservice@bio-techne.com

Bio-Techne Canada

21 Canmotor Ave
Toronto, ON M8Z 4E6
Canada
Phone: 905.827.6400
Toll Free: 855.668.8722
Fax: 905.827.6402
canada.inquires@bio-techne.com

Bio-Techne Ltd

19 Barton Lane
Abingdon Science Park
Abingdon, OX14 3NB, United Kingdom
Phone: (44) (0) 1235 529449
Free Phone: 0800 37 34 15
Fax: (44) (0) 1235 533420
info.EMEA@bio-techne.com

General Contact Information

www.novusbio.com
Technical Support: nb-technical@bio-techne.com
Orders: nb-customerservice@bio-techne.com
General: novus@novusbio.com

Limitations

This product is for research use only and is not approved for use in humans or in clinical diagnosis. Primary Antibodies are guaranteed for 1 year from date of receipt.

For more information on our 100% guarantee, please visit www.novusbio.com/guarantee

Earn gift cards/discounts by submitting a review: www.novusbio.com/reviews/submit/NB120-3515

Earn gift cards/discounts by submitting a publication using this product:
www.novusbio.com/publications

