

# Product Datasheet

## **COPB2 Antibody** **NB120-2915**

Unit Size: 100 ug

Store at -20C. Avoid freeze-thaw cycles.

[www.novusbio.com](http://www.novusbio.com)



[technical@novusbio.com](mailto:technical@novusbio.com)

Protocols, Publications, Related Products, Reviews, Research Tools and Images at:  
[www.novusbio.com/NB120-2915](http://www.novusbio.com/NB120-2915)

Updated 5/15/2025 v.20.1

**Earn rewards for product  
reviews and publications.**

Submit a publication at [www.novusbio.com/publications](http://www.novusbio.com/publications)

Submit a review at [www.novusbio.com/reviews/destination/NB120-2915](http://www.novusbio.com/reviews/destination/NB120-2915)



**NB120-2915**

COPB2 Antibody

**Product Information**

<b>Unit Size</b>	100 ug
<b>Concentration</b>	1 mg/ml
<b>Storage</b>	Store at -20C. Avoid freeze-thaw cycles.
<b>Clonality</b>	Polyclonal
<b>Preservative</b>	0.05% Sodium Azide
<b>Isotype</b>	IgG
<b>Purity</b>	Immunogen affinity purified
<b>Buffer</b>	PBS with 1 mg/ml BSA

**Product Description**

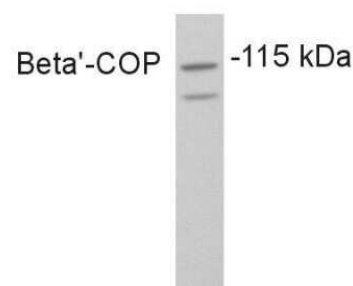
<b>Host</b>	Rabbit
<b>Gene ID</b>	9276
<b>Gene Symbol</b>	COPB2
<b>Species</b>	Human, Rat
<b>Reactivity Notes</b>	Human reactivity reported in scientific literature (PMID: 23845592).
<b>Specificity/Sensitivity</b>	Detects coatamer-protein I beta (COP I beta).
<b>Immunogen</b>	Synthetic peptide corresponding to residues K(494) V L A A Q E T H E G V T E D G I E(511) of rat beta-COP.

**Product Application Details**

<b>Applications</b>	Western Blot, Flow Cytometry, Immunocytochemistry/ Immunofluorescence
<b>Recommended Dilutions</b>	Western Blot 2 ug/ml, Flow Cytometry 3-5 ug/10 <sup>6</sup> cells, Immunocytochemistry/ Immunofluorescence 2 ug/ml
<b>Application Notes</b>	ICC/IF usage was reported in scientific literature (PMID: 11056392). WB: Detects an approx. 115 kDa protein representing COP I beta from PC-12 cell extract.

**Images**

Western Blot: COPB2 Antibody [NB120-2915] - Analysis of Beta-COP from PC-12 cell lysates.

**Fig. 1**



### **Novus Biologicals USA**

10730 E. Briarwood Avenue  
Centennial, CO 80112  
USA  
Phone: 303.730.1950  
Toll Free: 1.888.506.6887  
Fax: 303.730.1966  
nb-customerservice@bio-techne.com

### **Bio-Techne Canada**

21 Canmotor Ave  
Toronto, ON M8Z 4E6  
Canada  
Phone: 905.827.6400  
Toll Free: 855.668.8722  
Fax: 905.827.6402  
canada.inquires@bio-techne.com

### **Bio-Techne Ltd**

19 Barton Lane  
Abingdon Science Park  
Abingdon, OX14 3NB, United Kingdom  
Phone: (44) (0) 1235 529449  
Free Phone: 0800 37 34 15  
Fax: (44) (0) 1235 533420  
info.EMEA@bio-techne.com

### **General Contact Information**

[www.novusbio.com](http://www.novusbio.com)  
Technical Support: nb-technical@bio-techne.com  
Orders: nb-customerservice@bio-techne.com  
General: novus@novusbio.com

### **Limitations**

This product is for research use only and is not approved for use in humans or in clinical diagnosis. Primary Antibodies are guaranteed for 1 year from date of receipt.

For more information on our 100% guarantee, please visit [www.novusbio.com/guarantee](http://www.novusbio.com/guarantee)

Earn gift cards/discounts by submitting a review: [www.novusbio.com/reviews/submit/NB120-2915](http://www.novusbio.com/reviews/submit/NB120-2915)

Earn gift cards/discounts by submitting a publication using this product:  
[www.novusbio.com/publications](http://www.novusbio.com/publications)

