

Product Datasheet

Progesterone R/NR3C3 Antibody (alpha PR-22) - BSA Free NB120-2767

Unit Size: 100 ug

Store at -20C. Avoid freeze-thaw cycles.

www.novusbio.com



technical@novusbio.com

Protocols, Publications, Related Products, Reviews, Research Tools and Images at:
www.novusbio.com/NB120-2767

Updated 1/31/2023 v.20.1

Earn rewards for product
reviews and publications.

Submit a publication at www.novusbio.com/publications

Submit a review at www.novusbio.com/reviews/destination/NB120-2767



NB120-2767

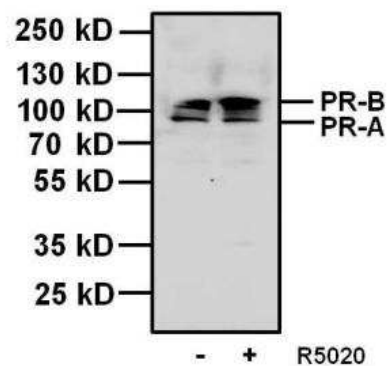
Progesterone R/NR3C3 Antibody (alpha PR-22) - BSA Free

Product Information	
Unit Size	100 ug
Concentration	LYOPH mg/ml
Storage	Store at -20C. Avoid freeze-thaw cycles.
Clonality	Monoclonal
Clone	alpha PR-22
Preservative	0.05% Sodium Azide
Reconstitution Instructions	Reconstitute to desired concentration.
Isotype	IgG2b
Purity	Immunogen affinity purified
Buffer	PBS
Product Description	
Host	Mouse
Gene ID	5241
Gene Symbol	PGR
Species	Human, Chicken, Reptile
Specificity/Sensitivity	Detects the A and B forms of progesterone receptor (PR) from chicken and some species of turtles. This does not cross-react with estrogen receptor or glucocorticoid receptor.
Immunogen	Progesterone receptor purified from chick oviduct cytosol.
Product Application Details	
Applications	Western Blot, Flow Cytometry, Gel Super Shift Assays, Immunoprecipitation, Immunofluorescence
Recommended Dilutions	Western Blot 1 ug/ml, Flow Cytometry 3 - 5 ug / 10 ⁶ cells, Immunoprecipitation 1:10 - 1:500, Gel Super Shift Assays 1:1 - 1:100, Immunofluorescence 10 ug/ml
Application Notes	WB: Detects an approx. 78 kDa protein representing the A form and a 110 kDa protein representing the B form of PR. The proportion of receptor bound by this product is significantly greater than NB120-2765 due to the binding of both the A and B form of PR. Protein A can effectively be used with this product in IP experiments.

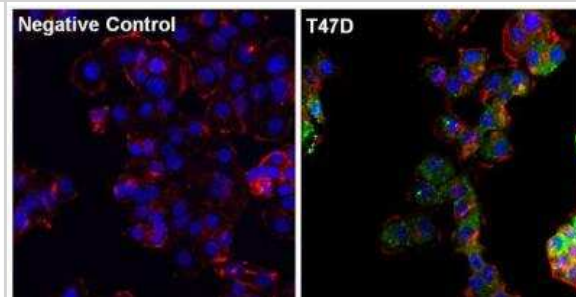


Images

Western Blot: Progesterone R/NR3C3 Antibody (alpha PR-22) [NB120-2767] - WB analysis using this antibody.



Immunofluorescence: Progesterone R/NR3C3 Antibody (alpha PR-22) [NB120-2767] - IF analysis of Progesterone Receptor (green) in T47D cells.





Novus Biologicals USA

10730 E. Briarwood Avenue
Centennial, CO 80112
USA
Phone: 303.730.1950
Toll Free: 1.888.506.6887
Fax: 303.730.1966
nb-customerservice@bio-techne.com

Bio-Techne Canada

21 Canmotor Ave
Toronto, ON M8Z 4E6
Canada
Phone: 905.827.6400
Toll Free: 855.668.8722
Fax: 905.827.6402
canada.inquires@bio-techne.com

Bio-Techne Ltd

19 Barton Lane
Abingdon Science Park
Abingdon, OX14 3NB, United Kingdom
Phone: (44) (0) 1235 529449
Free Phone: 0800 37 34 15
Fax: (44) (0) 1235 533420
info.EMEA@bio-techne.com

General Contact Information

www.novusbio.com
Technical Support: nb-technical@bio-techne.com
Orders: nb-customerservice@bio-techne.com
General: novus@novusbio.com

Limitations

This product is for research use only and is not approved for use in humans or in clinical diagnosis. Primary Antibodies are guaranteed for 1 year from date of receipt.

For more information on our 100% guarantee, please visit www.novusbio.com/guarantee

Earn gift cards/discounts by submitting a review: www.novusbio.com/reviews/submit/NB120-2767

Earn gift cards/discounts by submitting a publication using this product:
www.novusbio.com/publications

