

Product Datasheet

SAE2 Antibody NB120-22104

Unit Size: 0.1 mg

Store at 4C short term. Aliquot and store at -20C long term. Avoid freeze-thaw cycles.

www.novusbio.com



technical@novusbio.com

Publications: 4

Protocols, Publications, Related Products, Reviews, Research Tools and Images at:
www.novusbio.com/NB120-22104

Updated 10/28/2020 v.20.1

Earn rewards for product
reviews and publications.

Submit a publication at www.novusbio.com/publications

Submit a review at www.novusbio.com/reviews/destination/NB120-22104



NB120-22104

SAE2 Antibody

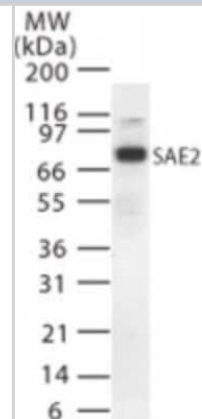
| Product Information | |
|---------------------|--|
| Unit Size | 0.1 mg |
| Concentration | 0.5 mg/ml |
| Storage | Store at 4C short term. Aliquot and store at -20C long term. Avoid freeze-thaw cycles. |
| Clonality | Polyclonal |
| Preservative | 0.05% Sodium Azide |
| Isotype | IgG |
| Purity | Protein G purified |
| Buffer | PBS containing 0.05% BSA |

| Product Description | |
|---------------------|---|
| Host | Rabbit |
| Gene ID | 10054 |
| Gene Symbol | UBA2 |
| Species | Human, Mouse, Rat |
| Reactivity Notes | Cross-reacts with Human, Mouse and Rat. |
| Immunogen | A synthetic peptide within amino acid residues 160-210 of human SAE2 was used as immunogen. |

| Product Application Details | |
|-----------------------------|----------------------------|
| Applications | Western Blot |
| Recommended Dilutions | Western Blot 0.5 - 2 ug/ml |

Images

Western Blot: SAE2 Antibody [NB120-22104] - Western blot analysis of SAE2 in HeLa cell lysate using NB120-22104 at 1.0 ug/ml.



Publications

Sidik SM, Salsman J, Dellaire G, Rohde JR. Shigella Infection Interferes with SUMOylation and Increases PML-NB Number PLoS ONE 2015-04-08 [PMID: 25848798] (WB, Human)

Details:

SAE2 antibody was used for WB on whole cell lysates from HeLa cells which were infected for 1, 2 or 3 hours with M90T, BS176 and UI strains of Shigella bearing a plasmid expressing the afaE adhesin (Fig 4).

Rosendorff A, Sakakibara S, Lu S et al. NXP-2 association with SUMO-2 depends on lysines required for transcriptional repression. Proc Natl Acad Sci U S A. 2006-04-04 [PMID: 16567619] (WB)

Details:

WB (293T cells transfected with NXP2): Fig 4A, Table 2 (band detected at 95 kD).

La Salle S, Sun F, Zhang XD et al. Developmental control of sumoylation pathway proteins in mouse male germ cells. Dev Biol. 2008-09-01 [PMID: 18602382] (WB)

Details:

SAE2 (IMG-5111A), PIASg (IMG-290), SENP1 CT (IMG-521). WB: Male germ cells; leptotene/zygotene, prepubertal pachytene, and adult pachytene spermatocytes, Fig 5.

Pal S, Santos A, Rosas JM et al. Influenza A virus interacts extensively with the cellular SUMOylation system during infection. Virus Res. 2011-06-01 [PMID: 21376763] (WB, Human)





Novus Biologicals USA

10730 E. Briarwood Avenue
Centennial, CO 80112
USA
Phone: 303.730.1950
Toll Free: 1.888.506.6887
Fax: 303.730.1966
nb-customerservice@bio-techne.com

Bio-Techne Canada

21 Canmotor Ave
Toronto, ON M8Z 4E6
Canada
Phone: 905.827.6400
Toll Free: 855.668.8722
Fax: 905.827.6402
canada.inquires@bio-techne.com

Bio-Techne Ltd

19 Barton Lane
Abingdon Science Park
Abingdon, OX14 3NB, United Kingdom
Phone: (44) (0) 1235 529449
Free Phone: 0800 37 34 15
Fax: (44) (0) 1235 533420
info.EMEA@bio-techne.com

General Contact Information

www.novusbio.com
Technical Support: nb-technical@bio-
techne.com
Orders: nb-customerservice@bio-techne.com
General: novus@novusbio.com

Limitations

This product is for research use only and is not approved for use in humans or in clinical diagnosis. Primary Antibodies are guaranteed for 1 year from date of receipt.

For more information on our 100% guarantee, please visit www.novusbio.com/guarantee

Earn gift cards/discounts by submitting a review: www.novusbio.com/reviews/submit/NB120-22104

Earn gift cards/discounts by submitting a publication using this product:
www.novusbio.com/publications

