

Product Datasheet

WT1 Antibody NB120-15250

Unit Size: 7 ml

Store at 4C short term. Aliquot and store at -20C long term. Avoid freeze-thaw cycles.

www.novusbio.com



technical@novusbio.com

Protocols, Publications, Related Products, Reviews, Research Tools and Images at:
www.novusbio.com/NB120-15250

Updated 2/5/2017 v.20.1

Earn rewards for product
reviews and publications.

Submit a publication at www.novusbio.com/publications

Submit a review at www.novusbio.com/reviews/destination/NB120-15250



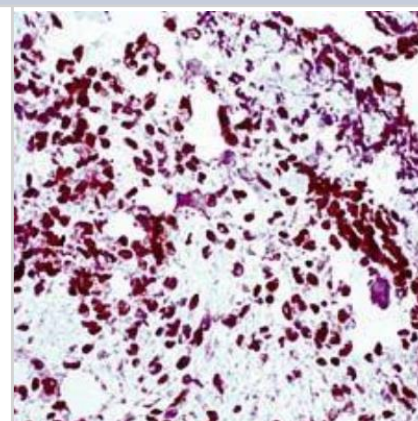
NB120-15250

WT1 Antibody

Product Information	
Unit Size	7 ml
Concentration	1.0 mg/ml
Storage	Store at 4C short term. Aliquot and store at -20C long term. Avoid freeze-thaw cycles.
Clonality	Polyclonal
Preservative	Sodium Azide
Purity	Immunogen affinity purified
Buffer	10mM PBS (pH 7.4) and BSA
Product Description	
Host	Rabbit
Gene ID	7490
Gene Symbol	WT1
Species	Human, Mouse, Rat
Reactivity Notes	Cross-reacts with Human, Mouse and Rat. Not yet tested in other species.
Specificity/Sensitivity	Wilms Tumor
Immunogen	Synthetic peptide (Human) (C terminal).
Product Application Details	
Applications	Immunohistochemistry, Immunohistochemistry-Paraffin
Recommended Dilutions	Immunohistochemistry 1:10-1:500, Immunohistochemistry-Paraffin Neat
Application Notes	IHC-P: Use neat for 10 min at RT. Boil tissue sections in 10mM Citrate buffer, pH 6.0 for 10 min followed by cooling at RT for 20 min. Not tested in other applications. Optimal dilutions/concentrations should be determined by the end user.

Images

Immunohistochemistry: WT1 Antibody [NB120-15250] - Human Wilm's Tumor stained with NB120-15250.





Novus Biologicals USA

10730 E. Briarwood Avenue
Centennial, CO 80112
USA

Phone: 303.730.1950
Toll Free: 1.888.506.6887
Fax: 303.730.1966
novus@novusbio.com

Novus Biologicals Canada

461 North Service Road West, Unit B37
Oakville, ON L6M 2V5
Canada

Phone: 905.827.6400
Toll Free: 855.668.8722
Fax: 905.827.6402
canada@novusbio.com

Novus Biologicals Europe

19 Barton Lane
Abingdon Science Park
Abingdon, OX14 3NB, United Kingdom

Phone: (44) (0) 1235 529449
Free Phone: 0800 37 34 15
Fax: (44) (0) 1235 533420
info@bio-techne.com

General Contact Information

www.novusbio.com
Technical Support: technical@novusbio.com
Orders: orders@novusbio.com
General: novus@novusbio.com

Limitations

This product is for research use only and is not approved for use in humans or in clinical diagnosis. Primary Antibodies are guaranteed for 1 year from date of receipt.

For more information on our 100% guarantee, please visit www.novusbio.com/guarantee

Earn gift cards/discounts by submitting a review: www.novusbio.com/reviews/submit/NB120-15250

Earn gift cards/discounts by submitting a publication using this product:
www.novusbio.com/publications

