

Product Datasheet

E2F-2 Antibody NB120-14292

Unit Size: 0.05 mg

Store at 4C short term. Aliquot and store at -20C long term. Avoid freeze-thaw cycles.

www.novusbio.com



technical@novusbio.com

Protocols, Publications, Related Products, Reviews, Research Tools and Images at:
www.novusbio.com/NB120-14292

Updated 10/31/2021 v.20.1

Earn rewards for product
reviews and publications.

Submit a publication at www.novusbio.com/publications

Submit a review at www.novusbio.com/reviews/destination/NB120-14292



NB120-14292**E2F-2 Antibody****Product Information**

Unit Size	0.05 mg
Concentration	1.0 mg/ml
Storage	Store at 4C short term. Aliquot and store at -20C long term. Avoid freeze-thaw cycles.
Clonality	Polyclonal
Preservative	No Preservative
Purity	Immunogen affinity purified
Buffer	PBS

Product Description

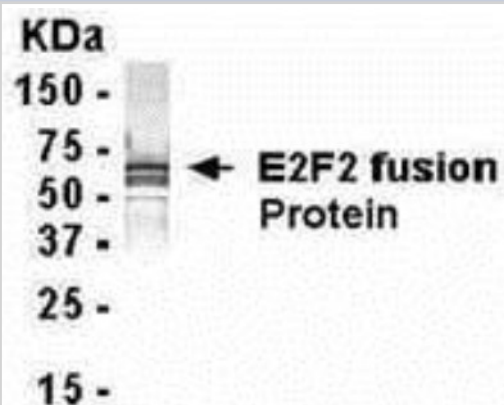
Host	Chicken
Gene ID	1870
Gene Symbol	E2F2
Species	Human, Mouse
Reactivity Notes	Cross-reacts with Human and Mouse. Not yet tested in other species.
Specificity/Sensitivity	E2F2
Immunogen	Synthetic peptide: corresponding to C terminal amino acids 348-437 of Human E2F2.
Notes	Chicken products cannot be exported to Canada.

Product Application Details

Applications	Western Blot, Electron Microscopy
Recommended Dilutions	Western Blot 1:100-1:2000, Electron Microscopy
Application Notes	WB: Use at a dilution of 1/1000 - 1/2000. Predicted molecular weight: 52 kDa. Not tested in other applications. Optimal dilutions/concentrations should be determined by the end user.

Images

Western Blot: E2F-2 Antibody [NB120-14292] - E coli-derived fusion protein as test antigen. Affi-anti- E2F2 dilution: 1:2000, Goat anti-IgY-HRP dilution: 1:1000. Colorimetric method for signal development. (anti-E2F2)





Novus Biologicals USA

10730 E. Briarwood Avenue
Centennial, CO 80112
USA
Phone: 303.730.1950
Toll Free: 1.888.506.6887
Fax: 303.730.1966
novus@novusbio.com

Bio-Techne Canada

21 Canmotor Ave
Toronto, ON M8Z 4E6
Canada
Phone: 905.827.6400
Toll Free: 855.668.8722
Fax: 905.827.6402
canada.inquires@bio-techne.com

Bio-Techne Ltd

19 Barton Lane
Abingdon Science Park
Abingdon, OX14 3NB, United Kingdom
Phone: (44) (0) 1235 529449
Free Phone: 0800 37 34 15
Fax: (44) (0) 1235 533420
info.EMEA@bio-techne.com

General Contact Information

www.novusbio.com
Technical Support: technical@novusbio.com
Orders: orders@novusbio.com
General: novus@novusbio.com

Limitations

This product is for research use only and is not approved for use in humans or in clinical diagnosis. Primary Antibodies are guaranteed for 1 year from date of receipt.

For more information on our 100% guarantee, please visit www.novusbio.com/guarantee

Earn gift cards/discounts by submitting a review: www.novusbio.com/reviews/submit/NB120-14292

Earn gift cards/discounts by submitting a publication using this product:
www.novusbio.com/publications

