

# Product Datasheet

## Profilin 2 Antibody NB120-14251

Unit Size: 0.05 mg

Store at -20C. Avoid freeze-thaw cycles.

[www.novusbio.com](http://www.novusbio.com)



[technical@novusbio.com](mailto:technical@novusbio.com)

Protocols, Publications, Related Products, Reviews, Research Tools and Images at:  
[www.novusbio.com/NB120-14251](http://www.novusbio.com/NB120-14251)

Updated 10/31/2021 v.20.1

Earn rewards for product  
reviews and publications.

Submit a publication at [www.novusbio.com/publications](http://www.novusbio.com/publications)

Submit a review at [www.novusbio.com/reviews/destination/NB120-14251](http://www.novusbio.com/reviews/destination/NB120-14251)



**NB120-14251**

## Profilin 2 Antibody

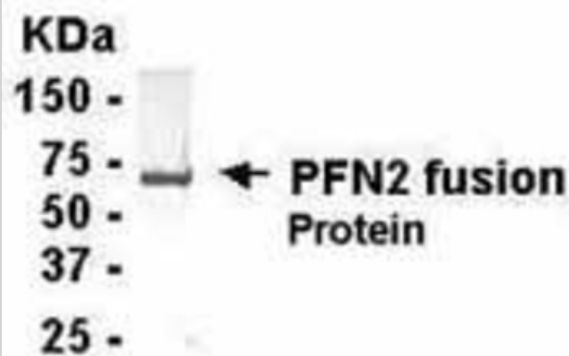
Product Information	
Unit Size	0.05 mg
Concentration	1.0 mg/ml
Storage	Store at -20C. Avoid freeze-thaw cycles.
Clonality	Polyclonal
Preservative	0.02% Sodium Azide
Purity	Immunogen affinity purified
Buffer	PBS

Product Description	
Host	Chicken
Gene ID	5217
Gene Symbol	PFN2
Species	Human, Mouse, Rat
Reactivity Notes	Cross-reacts with Human, Mouse and Rat. Not yet tested in other species.
Specificity/Sensitivity	Profilin 2
Immunogen	Fusion protein
Notes	Chicken products cannot be exported to Canada.

Product Application Details	
Applications	Western Blot
Recommended Dilutions	Western Blot 1:100-1:2000
Application Notes	In Western Blot the predicted molecular weight: 17 kDa.

**Images**

Western Blot: Profilin 2 Antibody[NB120-14251]-E coli-derived fusion protein as test antigen. Affi-anti-PFN2 IgY dilution: 1:2000, Goat anti-IgY-HRP dilution: 1:1000. Colorimetric method for signal development.





### **Novus Biologicals USA**

10730 E. Briarwood Avenue  
Centennial, CO 80112  
USA

Phone: 303.730.1950  
Toll Free: 1.888.506.6887  
Fax: 303.730.1966  
novus@novusbio.com

### **Bio-Techne Canada**

21 Canmotor Ave  
Toronto, ON M8Z 4E6  
Canada

Phone: 905.827.6400  
Toll Free: 855.668.8722  
Fax: 905.827.6402  
canada.inquires@bio-techne.com

### **Bio-Techne Ltd**

19 Barton Lane  
Abingdon Science Park  
Abingdon, OX14 3NB, United Kingdom

Phone: (44) (0) 1235 529449  
Free Phone: 0800 37 34 15  
Fax: (44) (0) 1235 533420  
info.EMEA@bio-techne.com

### **General Contact Information**

www.novusbio.com  
Technical Support: technical@novusbio.com  
Orders: orders@novusbio.com  
General: novus@novusbio.com

### **Limitations**

This product is for research use only and is not approved for use in humans or in clinical diagnosis. Primary Antibodies are guaranteed for 1 year from date of receipt.

For more information on our 100% guarantee, please visit [www.novusbio.com/guarantee](http://www.novusbio.com/guarantee)

Earn gift cards/discounts by submitting a review: [www.novusbio.com/reviews/submit/NB120-14251](http://www.novusbio.com/reviews/submit/NB120-14251)

Earn gift cards/discounts by submitting a publication using this product:  
[www.novusbio.com/publications](http://www.novusbio.com/publications)

