

Product Datasheet

KLHL12/C3IP1 Antibody - BSA Free NB120-14233

Unit Size: 0.05 mg

Store at 4C short term. Aliquot and store at -20C long term. Avoid freeze-thaw cycles.

www.novusbio.com



technical@novusbio.com

Publications: 2

Protocols, Publications, Related Products, Reviews, Research Tools and Images at:
www.novusbio.com/NB120-14233

Updated 10/3/2023 v.20.1

Earn rewards for product
reviews and publications.

Submit a publication at www.novusbio.com/publications

Submit a review at www.novusbio.com/reviews/destination/NB120-14233



NB120-14233

KLHL12/C3IP1 Antibody - BSA Free

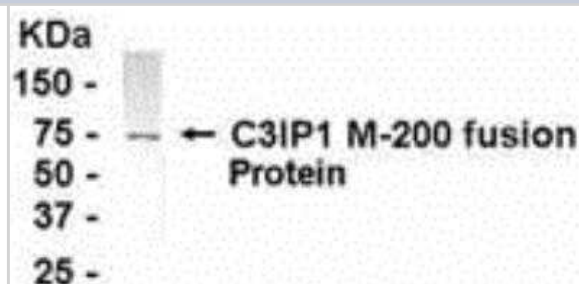
Product Information	
Unit Size	0.05 mg
Concentration	1.0 mg/ml
Storage	Store at 4C short term. Aliquot and store at -20C long term. Avoid freeze-thaw cycles.
Clonality	Polyclonal
Preservative	0.02% Sodium Azide
Purity	Immunogen affinity purified
Buffer	PBS (pH 7.2)

Product Description	
Host	Chicken
Gene ID	59349
Gene Symbol	KLHL12
Species	Human, Mouse, Rat
Specificity/Sensitivity	C3IP1
Immunogen	Synthetic peptide: KHAKKEREES LPNLLQYVRM PLLTPRYITD VIDAEPFIRC SLQCRDLVDE AKKFHLRPEL RSQMGGPRTR ARLGANEVLL VGGFGSQQS PIDVVEKYDP KTQEWSFLPS ITRKRRYVAS VSLHDRIYVI GGYDGRSRLS SVECLDYTAD EDGVWYSVAP MNVRRLAGA TTLGDMIIYVS GGFDGSRRH SMERYDPNID, corresponding to amino acids 205-404 of Human C3IP1. NCBI Accession number: NP_067646.1
Notes	Chicken products cannot be exported to Canada.

Product Application Details	
Applications	Immunocytochemistry/Immunofluorescence
Recommended Dilutions	Immunocytochemistry/Immunofluorescence
Application Notes	WB: Predicted molecular weight: 68 kDa. Optimal dilutions/concentrations should be determined by the end user. Use in Immunocytochemistry/immunofluorescence reported in scientific literature (PMID 28428367).

Images

Western Blot: KLHL12/C3IP1 Antibody [NB120-14233] - E coli-derived fusion protein as test antigen. Affi-pure IgY dilution: 1:2000, Goat anti-IgY-HRP dilution: 1:1000. Colorimetric method for signal development. (anti-KLHL12)



Publications

McGourty C A, Akopian D et al. Regulation of the CUL3 Ubiquitin Ligase by a Calcium-Dependent Co-adaptor. Cell 2016-06-10 [PMID: 27716508] (WB, ICC/IF, Human)

Gorur A, Yuan L, Kenny SJ et al. COPII-coated membranes function as transport carriers of intracellular procollagen-1 bioRxiv 2017-02-21 [PMID: 28428367] (WB, Human)



Novus Biologicals USA

10730 E. Briarwood Avenue
Centennial, CO 80112
USA
Phone: 303.730.1950
Toll Free: 1.888.506.6887
Fax: 303.730.1966
novus@novusbio.com

Bio-Techne Canada

21 Canmotor Ave
Toronto, ON M8Z 4E6
Canada
Phone: 905.827.6400
Toll Free: 855.668.8722
Fax: 905.827.6402
canada.inquires@bio-techne.com

Bio-Techne Ltd

19 Barton Lane
Abingdon Science Park
Abingdon, OX14 3NB, United Kingdom
Phone: (44) (0) 1235 529449
Free Phone: 0800 37 34 15
Fax: (44) (0) 1235 533420
info.EMEA@bio-techne.com

General Contact Information

www.novusbio.com
Technical Support: technical@novusbio.com
Orders: orders@novusbio.com
General: novus@novusbio.com

Limitations

This product is for research use only and is not approved for use in humans or in clinical diagnosis. Primary Antibodies are guaranteed for 1 year from date of receipt.

For more information on our 100% guarantee, please visit www.novusbio.com/guarantee

Earn gift cards/discounts by submitting a review: www.novusbio.com/reviews/submit/NB120-14233

Earn gift cards/discounts by submitting a publication using this product:
www.novusbio.com/publications

