

Product Datasheet

HSP10/EPF Antibody (M1.4)

NB120-13526

Unit Size: 0.05 mg

Store at 4C short term. Aliquot and store at -20C long term. Avoid freeze-thaw cycles.

www.novusbio.com



technical@novusbio.com

Protocols, Publications, Related Products, Reviews, Research Tools and Images at:
www.novusbio.com/NB120-13526

Updated 12/19/2022 v.20.1

Earn rewards for product
reviews and publications.

Submit a publication at www.novusbio.com/publications

Submit a review at www.novusbio.com/reviews/destination/NB120-13526



NB120-13526

HSP10/EPF Antibody (M1.4)

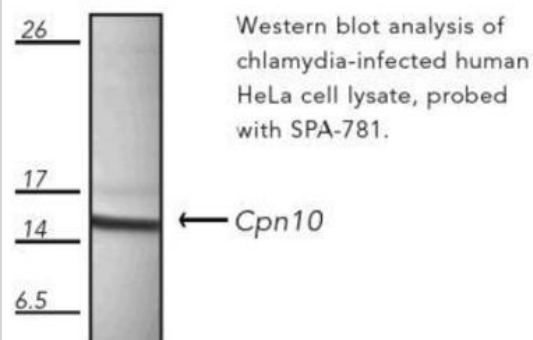
Product Information	
Unit Size	0.05 mg
Concentration	0.9 mg/ml
Storage	Store at 4C short term. Aliquot and store at -20C long term. Avoid freeze-thaw cycles.
Clonality	Monoclonal
Clone	M1.4
Preservative	No Preservative
Isotype	IgG1
Purity	Protein G purified
Buffer	phosphate buffered saline (PBS), 0.1mM PMSF

Product Description	
Host	Mouse
Gene ID	3336
Gene Symbol	HSPE1
Species	Bacteria
Reactivity Notes	Cross-reacts with <i>C. trachomatis</i> . Does not cross-react with Human, Mouse or <i>E. coli</i> . Not yet tested in other species.
Specificity/Sensitivity	This affinity purified detects a 15 kDa protein, corresponding to the apparent molecular mass of cpn10 on SDSPAGE immunoblots, in <i>C. trachomatis</i> infected cells. This will not react with the human or mouse cpn10 homolog nor with <i>E. coli</i> GroES.
Immunogen	A 16 residue synthetic MAP peptide KKDDKGQQLPFVQVG based on <i>C. trachomatis</i> cpn10 (residues 54-69).

Product Application Details	
Applications	Western Blot, ELISA, Immunoprecipitation
Recommended Dilutions	Western Blot 0.25 mg/ml, ELISA 1:100-1:2000, Immunoprecipitation 1:10-1:500
Application Notes	EIA: Use at an assay dependent dilution. IP: Use at an assay dependent dilution. WB: Use at a concentration of 0.25 ug/ml. Detects a band of approximately 15 kDa (predicted molecular weight: 9.9 kDa). Not tested in other applications. Optimal dilutions/con

Images

Western Blot: Hsp10 Antibody (M1.4) [NB120-13526] - Western blot analysis of chlamydia-infected human HeLa cell lysate probed with SPA-781





Novus Biologicals USA

10730 E. Briarwood Avenue
Centennial, CO 80112
USA
Phone: 303.730.1950
Toll Free: 1.888.506.6887
Fax: 303.730.1966
novus@novusbio.com

Bio-Techne Canada

21 Canmotor Ave
Toronto, ON M8Z 4E6
Canada
Phone: 905.827.6400
Toll Free: 855.668.8722
Fax: 905.827.6402
canada.inquires@bio-techne.com

Bio-Techne Ltd

19 Barton Lane
Abingdon Science Park
Abingdon, OX14 3NB, United Kingdom
Phone: (44) (0) 1235 529449
Free Phone: 0800 37 34 15
Fax: (44) (0) 1235 533420
info.EMEA@bio-techne.com

General Contact Information

www.novusbio.com
Technical Support: technical@novusbio.com
Orders: orders@novusbio.com
General: novus@novusbio.com

Limitations

This product is for research use only and is not approved for use in humans or in clinical diagnosis. Primary Antibodies are guaranteed for 1 year from date of receipt.

For more information on our 100% guarantee, please visit www.novusbio.com/guarantee

Earn gift cards/discounts by submitting a review: www.novusbio.com/reviews/submit/NB120-13526

Earn gift cards/discounts by submitting a publication using this product:
www.novusbio.com/publications

