

# Product Datasheet

## Proteasome 20S alpha 5 Antibody NB120-11437

Unit Size: 100ug

Store at -20C. Avoid freeze-thaw cycles.

[www.novusbio.com](http://www.novusbio.com)



[technical@novusbio.com](mailto:technical@novusbio.com)

Protocols, Publications, Related Products, Reviews, Research Tools and Images at:  
[www.novusbio.com/NB120-11437](http://www.novusbio.com/NB120-11437)

Updated 5/15/2025 v.20.1

Earn rewards for product  
reviews and publications.

Submit a publication at [www.novusbio.com/publications](http://www.novusbio.com/publications)

Submit a review at [www.novusbio.com/reviews/destination/NB120-11437](http://www.novusbio.com/reviews/destination/NB120-11437)



**NB120-11437**

## Proteasome 20S alpha 5 Antibody

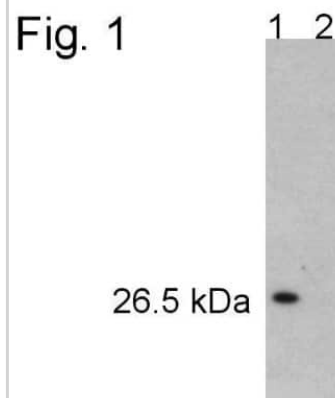
Product Information	
Unit Size	100ug
Concentration	1 mg/ml
Storage	Store at -20C. Avoid freeze-thaw cycles.
Clonality	Polyclonal
Preservative	0.05% Sodium Azide
Isotype	IgG
Purity	Immunogen affinity purified
Buffer	PBS with 1 mg/ml BSA

Product Description	
Host	Rabbit
Gene ID	5686
Gene Symbol	PSMA5
Species	Human, Mouse, Rat
Specificity/Sensitivity	This detects proteasome 20S subunit alpha 5 from human, rat and mouse cell lysates.
Immunogen	Synthetic peptide corresponding to residues C A(120) L Q F G E E D A D P G A M(133) of human proteasome 20S subunit alpha 5.

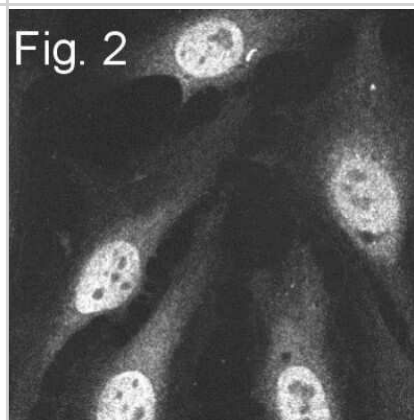
Product Application Details	
Applications	Western Blot, Immunocytochemistry/ Immunofluorescence, Immunohistochemistry, Immunohistochemistry-Paraffin
Recommended Dilutions	Western Blot 1 ug/ml, Immunohistochemistry 1:10 - 1:500, Immunocytochemistry/ Immunofluorescence 1 ug/ml, Immunohistochemistry-Paraffin 1:10 - 1:500
Application Notes	WB: Detects an approx. 26.5 kDa protein.

**Images**

Western Blot: Proteasome 20S alpha 5 Antibody [NB120-11437] - Analysis of HeLa cell extract. Lane 1 is NB120-11437. Lane 2 is NB120-11437 pre-incubated with peptide.



Immunocytochemistry/Immunofluorescence: Proteasome 20S alpha 5 Antibody [NB120-11437] - HeLa cells





### **Novus Biologicals USA**

10730 E. Briarwood Avenue  
Centennial, CO 80112  
USA  
Phone: 303.730.1950  
Toll Free: 1.888.506.6887  
Fax: 303.730.1966  
nb-customerservice@bio-techne.com

### **Bio-Techne Canada**

21 Canmotor Ave  
Toronto, ON M8Z 4E6  
Canada  
Phone: 905.827.6400  
Toll Free: 855.668.8722  
Fax: 905.827.6402  
canada.inquires@bio-techne.com

### **Bio-Techne Ltd**

19 Barton Lane  
Abingdon Science Park  
Abingdon, OX14 3NB, United Kingdom  
Phone: (44) (0) 1235 529449  
Free Phone: 0800 37 34 15  
Fax: (44) (0) 1235 533420  
info.EMEA@bio-techne.com

### **General Contact Information**

www.novusbio.com  
Technical Support: nb-technical@bio-  
techne.com  
Orders: nb-customerservice@bio-techne.com  
General: novus@novusbio.com

### **Limitations**

This product is for research use only and is not approved for use in humans or in clinical diagnosis. Primary Antibodies are guaranteed for 1 year from date of receipt.

For more information on our 100% guarantee, please visit [www.novusbio.com/guarantee](http://www.novusbio.com/guarantee)

Earn gift cards/discounts by submitting a review: [www.novusbio.com/reviews/submit/NB120-11437](http://www.novusbio.com/reviews/submit/NB120-11437)

Earn gift cards/discounts by submitting a publication using this product:  
[www.novusbio.com/publications](http://www.novusbio.com/publications)

