

Product Datasheet

Clathrin Heavy Chain 1/CHC17 Antibody (TD.1) - BSA Free NB120-11331

Unit Size: 0.1 ml

Store at 4C short term. Aliquot and store at -20C long term. Avoid freeze-thaw cycles.

www.novusbio.com



technical@novusbio.com

Publications: 1

Protocols, Publications, Related Products, Reviews, Research Tools and Images at:
www.novusbio.com/NB120-11331

Updated 6/13/2024 v.20.1

Earn rewards for product
reviews and publications.

Submit a publication at www.novusbio.com/publications

Submit a review at www.novusbio.com/reviews/destination/NB120-11331



NB120-11331

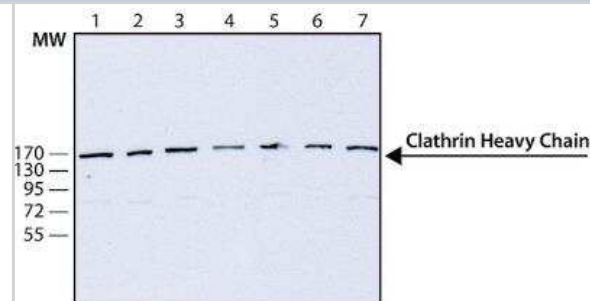
Clathrin Heavy Chain 1/CHC17 Antibody (TD.1) - BSA Free

Product Information	
Unit Size	0.1 ml
Concentration	2.0 mg/ml
Storage	Store at 4C short term. Aliquot and store at -20C long term. Avoid freeze-thaw cycles.
Clonality	Monoclonal
Clone	TD.1
Preservative	0.9% Sodium Azide
Isotype	IgG1
Purity	Protein A or G purified
Buffer	10mM PBS (pH 7.4)
Product Description	
Host	Mouse
Gene ID	1213
Gene Symbol	CLTC
Species	Human, Mouse, Rat, Bovine
Reactivity Notes	Please note that this antibody is reactive to Mouse and derived from the same host, Mouse. Additional Mouse on Mouse blocking steps may be required for IHC and ICC experiments. Please contact Technical Support for more information.
Marker	Clathrin-coated Vesicle Marker
Specificity/Sensitivity	Monoclonal Anti-Clathrin Heavy Chain reacts specifically with the clathrin heavy chain (CHC17), and does not cross-react with the muscle isoform CHC22. The epitope recognized by the antibody resides within amino acids 207-264 of bovine clathrin heavy chains. It is reported to be non-reactive with native clathrin in immunocytochemistry and immunoprecipitation (but some staining is seen in Rat1 cells, following 4% paraformaldehyde-0.5% Triton X-100 fixation).
Immunogen	Full length native protein (purified) (Cow). UniProt accession no. Q00610.
Product Application Details	
Applications	Western Blot
Recommended Dilutions	Western Blot 1:100-1:2000
Application Notes	WB: Use at a concentration of 1 - 4 ug/ml. Detects a band of approximately 180 kDa (predicted molecular weight: 192 kDa). Not tested in other applications. Optimal dilutions/concentrations should be determined by the end user.



Images

Western Blot: Clathrin Heavy Chain 1/CHC17 Antibody (TD.1) - BSA Free [NB120-11331] - Cell line lysates were separated on SDS-PAGE and probed with 4 ug/mL Monoclonal Anti-Clathrin Heavy Chain Clone: TD.1. The antibody was developed using Goat Anti-Mouse IgG-Peroxidase and a chemiluminescent substrate. Lanes 1. HEK-293T 2. HeLa 3. SH-SY5Y 4. SK-N-SH 5. COS7 6. PC12 7. Neuro-2a



Publications

Grossman GH, Ebke LA, Beight CD et al. Protein partners of dynamin-1 in the retina. Vis Neurosci 2013-06-10 [PMID: 23746204]



Novus Biologicals USA

10730 E. Briarwood Avenue
Centennial, CO 80112
USA
Phone: 303.730.1950
Toll Free: 1.888.506.6887
Fax: 303.730.1966
nb-customerservice@bio-techne.com

Bio-Techne Canada

21 Canmotor Ave
Toronto, ON M8Z 4E6
Canada
Phone: 905.827.6400
Toll Free: 855.668.8722
Fax: 905.827.6402
canada.inquires@bio-techne.com

Bio-Techne Ltd

19 Barton Lane
Abingdon Science Park
Abingdon, OX14 3NB, United Kingdom
Phone: (44) (0) 1235 529449
Free Phone: 0800 37 34 15
Fax: (44) (0) 1235 533420
info.EMEA@bio-techne.com

General Contact Information

www.novusbio.com
Technical Support: nb-technical@bio-techne.com
Orders: nb-customerservice@bio-techne.com
General: novus@novusbio.com

Limitations

This product is for research use only and is not approved for use in humans or in clinical diagnosis. Primary Antibodies are guaranteed for 1 year from date of receipt.

For more information on our 100% guarantee, please visit www.novusbio.com/guarantee

Earn gift cards/discounts by submitting a review: www.novusbio.com/reviews/submit/NB120-11331

Earn gift cards/discounts by submitting a publication using this product:
www.novusbio.com/publications

