

Product Datasheet

Tubulin Beta 4 Antibody (ONS.1A6) NB120-11315

Unit Size: 0.1 ml

Store at 4C short term. Aliquot and store at -20C long term. Avoid freeze-thaw cycles.

www.novusbio.com



technical@novusbio.com

Publications: 2

Protocols, Publications, Related Products, Reviews, Research Tools and Images at:
www.novusbio.com/NB120-11315

Updated 7/28/2024 v.20.1

Earn rewards for product
reviews and publications.

Submit a publication at www.novusbio.com/publications

Submit a review at www.novusbio.com/reviews/destination/NB120-11315



NB120-11315

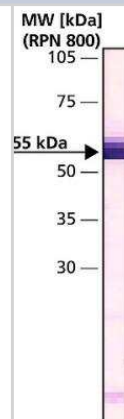
Tubulin Beta 4 Antibody (ONS.1A6)

Product Information	
Unit Size	0.1 ml
Concentration	This product is unpurified. The exact concentration of antibody is not quantifiable.
Storage	Store at 4C short term. Aliquot and store at -20C long term. Avoid freeze-thaw cycles.
Clonality	Monoclonal
Clone	ONS.1A6
Preservative	0.9% Sodium Azide
Isotype	IgG1
Purity	Unpurified
Buffer	Ascites
Target Molecular Weight	~55 kDa
Product Description	
Host	Mouse
Gene ID	10382
Gene Symbol	TUBB4A
Species	Human, Mouse, Rat, Bovine, Chicken, Hamster
Reactivity Notes	Cross-reacts with Human, Mouse, Rat, Cow and Chicken. Not yet tested in other species. Please note that this antibody is reactive to Mouse and derived from the same host, Mouse. Additional Mouse on Mouse blocking steps may be required for IHC and ICC experiments. Please contact Technical Support for more information.
Specificity/Sensitivity	The does not react with other tubulin isotypes.
Immunogen	Synthetic peptide corresponding to the C-terminal sequence, conjugated to BSA.
Product Application Details	
Applications	Western Blot, ELISA, Immunocytochemistry/ Immunofluorescence, Immunohistochemistry, Immunohistochemistry-Paraffin, Microarray
Recommended Dilutions	Western Blot 1:400, ELISA 1:100-1:2000, Immunohistochemistry 1:10-1:500, Immunocytochemistry/ Immunofluorescence, Immunohistochemistry-Paraffin 1:10-1:500, Microarray
Application Notes	Western Blot. WB: Detects a band of approximately 55 kDa and possibly the 100 kDa dimer.



Images

Western Blot: Tubulin Beta 4 Antibody (ONS.1A6) [NB120-11315] - MCF7 Human breast carcinoma cells extract was separated on SDS-PAGE and probed with Monoclonal AB To Tubulin Beta IV CL:ONS.1A6. The antibody was developed with AlkPhos APA Mouse Fab ads HlgG and a NBT/BCIP substrate. Antibody dilution 1/400.



Publications

Radwitz J, Hausrat TJ, Heisler FF et al. Tubb3 expression levels are sensitive to neuronal activity changes and determine microtubule growth and kinesin-mediated transport Cellular and molecular life sciences : CMLS 2022-10-29 [PMID: 36309617] (ICC/IF)

Hausrat TJ, Radwitz J, Lombino FL et al. Alpha- and beta-tubulin isotypes are differentially expressed during brain development Dev Neurobiol 2020-04-15 [PMID: 32293117] (WB, Human)



Novus Biologicals USA

10730 E. Briarwood Avenue
Centennial, CO 80112
USA
Phone: 303.730.1950
Toll Free: 1.888.506.6887
Fax: 303.730.1966
nb-customerservice@bio-techne.com

Bio-Techne Canada

21 Canmotor Ave
Toronto, ON M8Z 4E6
Canada
Phone: 905.827.6400
Toll Free: 855.668.8722
Fax: 905.827.6402
canada.inquires@bio-techne.com

Bio-Techne Ltd

19 Barton Lane
Abingdon Science Park
Abingdon, OX14 3NB, United Kingdom
Phone: (44) (0) 1235 529449
Free Phone: 0800 37 34 15
Fax: (44) (0) 1235 533420
info.EMEA@bio-techne.com

General Contact Information

www.novusbio.com
Technical Support: nb-technical@bio-
techne.com
Orders: nb-customerservice@bio-techne.com
General: novus@novusbio.com

Limitations

This product is for research use only and is not approved for use in humans or in clinical diagnosis. Primary Antibodies are guaranteed for 1 year from date of receipt.

For more information on our 100% guarantee, please visit www.novusbio.com/guarantee

Earn gift cards/discounts by submitting a review: www.novusbio.com/reviews/submit/NB120-11315

Earn gift cards/discounts by submitting a publication using this product:
www.novusbio.com/publications

