

Product Datasheet

beta-III Tubulin Antibody (SDL.3D10) NB120-11314

Unit Size: 0.1 ml

Store at 4C short term. Aliquot and store at -20C long term. Avoid freeze-thaw cycles.

www.novusbio.com



technical@novusbio.com

Publications: 4

Protocols, Publications, Related Products, Reviews, Research Tools and Images at:
www.novusbio.com/NB120-11314

Updated 12/25/2024 v.20.1

Earn rewards for product
reviews and publications.

Submit a publication at www.novusbio.com/publications

Submit a review at www.novusbio.com/reviews/destination/NB120-11314



NB120-11314

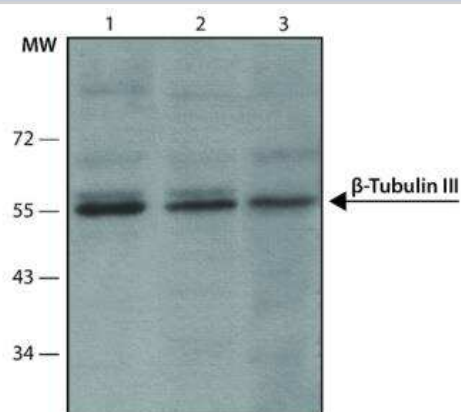
beta-III Tubulin Antibody (SDL.3D10)

Product Information	
Unit Size	0.1 ml
Concentration	This product is unpurified. The exact concentration of antibody is not quantifiable.
Storage	Store at 4C short term. Aliquot and store at -20C long term. Avoid freeze-thaw cycles.
Clonality	Monoclonal
Clone	SDL.3D10
Preservative	0.09% Sodium Azide
Isotype	IgG2b
Purity	Unpurified
Buffer	Ascites
Product Description	
Host	Mouse
Gene ID	10381
Gene Symbol	TUBB3
Species	Human, Mouse, Rat, Bovine, Chicken (Negative)
Reactivity Notes	Not yet tested in other species. Please note that this antibody is reactive to Mouse and derived from the same host, Mouse. Additional Mouse on Mouse blocking steps may be required for IHC and ICC experiments. Please contact Technical Support for more information.
Marker	Neuronal Marker
Specificity/Sensitivity	may be used for the localization of isotype III of beta-tubulin using various immunochemical assays.
Immunogen	Chemically synthesized peptide corresponding to the carboxyl-terminal sequence of human beta-tubulin isotype III conjugated to BSA.
Product Application Details	
Applications	Western Blot, Simple Western, ELISA, Immunocytochemistry/ Immunofluorescence
Recommended Dilutions	Western Blot 1:400, Simple Western, ELISA 1:100-1:2000, Immunocytochemistry/ Immunofluorescence 1:10-1:500
Application Notes	Indirect ELISA: Use at an assay dependent dilution. WB: Use at a dilution of 1/400. Predicted molecular weight: 55 kDa. Not tested in other applications. Optimal dilutions/concentrations should be determined by the end user. Simple Western reported by an internal validation. Separated by Size-All, antibody dilution of 1:100; matrix was 12-230 kDa.

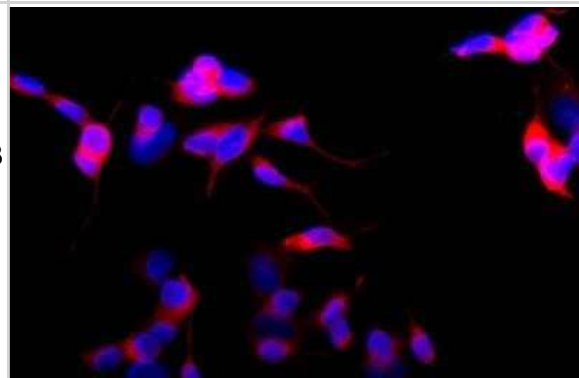


Images

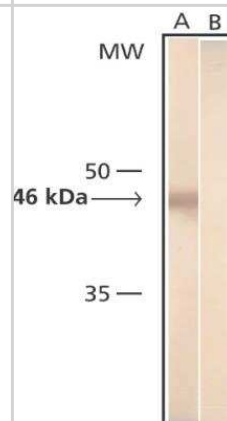
Western Blot: beta-III Tubulin Antibody (SDL.3D10) [NB120-11314] - Cell line lysates were separated on SDS-PAGE and probed with 1:400 Monoclonal Anti-beta-Tubulin III Clone: DL.3D10. The antibody was developed using Goat Anti-Mouse IgG-Peroxidase and a chemiluminescent substrate. Lanes 1. U87 2. MDBK 3. RAT2



Immunocytochemistry/Immunofluorescence: beta-III Tubulin Antibody (SDL.3D10) [NB120-11314] - SH-SY-5Y cells were fixed and permeabilized with methanol followed by methanol:acetone. Fixed cells were stained with 1:400 Monoclonal Anti-beta-Tubulin III Clone: SDL.3D10 The antibody was developed using Goat Anti-Mouse IgG, Cy3 (r) conjugate. Cells were counterstained with DAPI (blue) to stain nuclei.



Western Blot: Tubulin Beta 3 Antibody (SDL.3D10) [NB120-11314] - Produced in mouse



Publications

Bonanomi D, Valenza F, Chivatakarn O et al. p190RhoGAP Filters Competing Signals to Resolve Axon Guidance Conflicts Neuron 2019-03-15 [PMID: 30902550] (WB, Mouse)

Krohn M, Wanek T, Menet MC et al. Humanization of the Blood-Brain Barrier Transporter ABCB1 in Mice Disrupts Genomic Locus- Lessons from Three Unsuccessful Approaches. Eur J Microbiol Immunol (Bp). 2018-09-28 [PMID: 30345087] (WB, Mouse)

Parras A, Anta H, Santos-Galindo M et al. Autism-like phenotype and risk gene mRNA deadenylation by CPEB4 missplicing. Nature 2018-08-15 [PMID: 30111840] (WB, Human)

Bonanomi D, Chivatakarn O, Bai G, Abdesslem H, Lettieri K, Marquardt T, Pierchala BA, Pfaff SL. Ret Is a Multifunctional Coreceptor that Integrates Diffusible- and Contact-Axon Guidance Signals. Cell;148(3):568-82. 2012-02-03 [PMID: 22304922]



Novus Biologicals USA

10730 E. Briarwood Avenue
Centennial, CO 80112
USA
Phone: 303.730.1950
Toll Free: 1.888.506.6887
Fax: 303.730.1966
nb-customerservice@bio-techne.com

Bio-Techne Canada

21 Canmotor Ave
Toronto, ON M8Z 4E6
Canada
Phone: 905.827.6400
Toll Free: 855.668.8722
Fax: 905.827.6402
canada.inquires@bio-techne.com

Bio-Techne Ltd

19 Barton Lane
Abingdon Science Park
Abingdon, OX14 3NB, United Kingdom
Phone: (44) (0) 1235 529449
Free Phone: 0800 37 34 15
Fax: (44) (0) 1235 533420
info.EMEA@bio-techne.com

General Contact Information

www.novusbio.com
Technical Support: nb-technical@bio-
techne.com
Orders: nb-customerservice@bio-techne.com
General: novus@novusbio.com

Limitations

This product is for research use only and is not approved for use in humans or in clinical diagnosis. Primary Antibodies are guaranteed for 1 year from date of receipt.

For more information on our 100% guarantee, please visit www.novusbio.com/guarantee

Earn gift cards/discounts by submitting a review: www.novusbio.com/reviews/submit/NB120-11314

Earn gift cards/discounts by submitting a publication using this product:
www.novusbio.com/publications

