

# Product Datasheet

## Ret Antibody (4G1) NB110-93601

Unit Size: 0.1 mg

Aliquot and store at -20C or -80C. Avoid freeze-thaw cycles.

[www.novusbio.com](http://www.novusbio.com)



[technical@novusbio.com](mailto:technical@novusbio.com)

Protocols, Publications, Related Products, Reviews, Research Tools and Images at:  
[www.novusbio.com/NB110-93601](http://www.novusbio.com/NB110-93601)

Updated 2/5/2017 v.20.1

Earn rewards for product  
reviews and publications.

Submit a publication at [www.novusbio.com/publications](http://www.novusbio.com/publications)

Submit a review at [www.novusbio.com/reviews/destination/NB110-93601](http://www.novusbio.com/reviews/destination/NB110-93601)



**NB110-93601**

Ret Antibody (4G1)

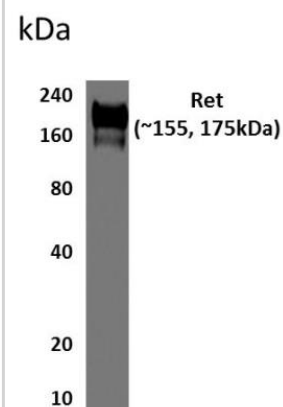
Product Information	
Unit Size	0.1 mg
Concentration	LYOPH mg/ml
Storage	Aliquot and store at -20C or -80C. Avoid freeze-thaw cycles.
Clonality	Monoclonal
Clone	4G1
Preservative	No Preservative
Reconstitution Instructions	Reconstitute with 0.5 ml sterilized PBS to a final concentration of 0.2 mg/ml.
Isotype	IgG1
Purity	Protein G purified
Buffer	A 0.2 um filtered solution in PBS

Product Description	
Host	Rat
Gene ID	5979
Gene Symbol	RET
Species	Human, Mouse
Reactivity Notes	This antibody shows certain cross-reactivity with recombinant human Ret and mouse.
Specificity/Sensitivity	This was selected for its ability to detect mouse Ret in western blots.
Immunogen	Recombinant mouse Ret extracellular domain

Product Application Details	
Applications	Western Blot
Recommended Dilutions	Western Blot 1:100-1000

**Images**

Western Blot: Ret Antibody (4G1) [NB110-93601] - Analysis of mouse placental tissue lysates.





### **Novus Biologicals USA**

10730 E. Briarwood Avenue  
Centennial, CO 80112  
USA

Phone: 303.730.1950  
Toll Free: 1.888.506.6887  
Fax: 303.730.1966  
novus@novusbio.com

### **Novus Biologicals Canada**

461 North Service Road West, Unit B37  
Oakville, ON L6M 2V5  
Canada

Phone: 905.827.6400  
Toll Free: 855.668.8722  
Fax: 905.827.6402  
canada@novusbio.com

### **Novus Biologicals Europe**

19 Barton Lane  
Abingdon Science Park  
Abingdon, OX14 3NB, United Kingdom

Phone: (44) (0) 1235 529449  
Free Phone: 0800 37 34 15  
Fax: (44) (0) 1235 533420  
info@bio-techne.com

### **General Contact Information**

www.novusbio.com  
Technical Support: technical@novusbio.com  
Orders: orders@novusbio.com  
General: novus@novusbio.com

### **Limitations**

This product is for research use only and is not approved for use in humans or in clinical diagnosis. Primary Antibodies are guaranteed for 1 year from date of receipt.

For more information on our 100% guarantee, please visit [www.novusbio.com/guarantee](http://www.novusbio.com/guarantee)

Earn gift cards/discounts by submitting a review: [www.novusbio.com/reviews/submit/NB110-93601](http://www.novusbio.com/reviews/submit/NB110-93601)

Earn gift cards/discounts by submitting a publication using this product:  
[www.novusbio.com/publications](http://www.novusbio.com/publications)

