

Product Datasheet

DRAM Antibody NB110-85526

Unit Size: 0.1 mg

Aliquot and store at -20C or -80C. Avoid freeze-thaw cycles.

www.novusbio.com



technical@novusbio.com

Protocols, Publications, Related Products, Reviews, Research Tools and Images at:
www.novusbio.com/NB110-85526

Updated 6/27/2018 v.20.1

Earn rewards for product
reviews and publications.

Submit a publication at www.novusbio.com/publications

Submit a review at www.novusbio.com/reviews/destination/NB110-85526



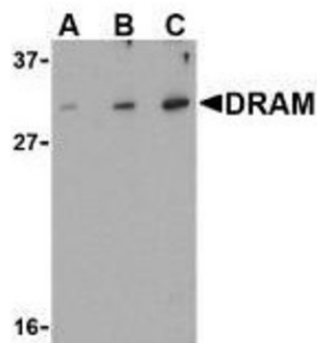
NB110-85526

DRAM Antibody

Product Information	
Unit Size	0.1 mg
Concentration	Please see the vial label for concentration. If unlisted please contact technical services.
Storage	Aliquot and store at -20C or -80C. Avoid freeze-thaw cycles.
Clonality	Polyclonal
Preservative	0.01% Sodium Azide
Purity	Immunogen affinity purified
Buffer	0.02 M Potassium Phosphate, 0.15 M Sodium Chloride, pH 7.2
Product Description	
Host	Rabbit
Gene ID	55332
Gene Symbol	DRAM1
Species	Human, Mouse, Rat
Reactivity Notes	This antibody is reactive to Human, Mouse, and Rat.
Specificity/Sensitivity	This is directed against human DRAM protein. This reacts with DRAM from human, mouse and rat sources.
Immunogen	This affinity purified antibody was prepared from whole rabbit serum produced by repeated immunizations with a synthetic peptide corresponding to a region near the amino terminus of human DRAM protein.
Product Application Details	
Applications	Western Blot, ELISA, Immunocytochemistry/Immunofluorescence
Recommended Dilutions	Western Blot 0.5-2 ug/ml, ELISA 1:10000-1:40000, Immunocytochemistry/Immunofluorescence 1:10-1:2000
Application Notes	This affinity purified antibody has been tested for use in ELISA and western blotting. Expect a band at approx 33 kDa in size corresponding - DRAM by western blotting in the appropriate cell lysate or extract. K562 cell lysate can be used as positive control.

Images

Western Blot: DRAM Antibody [NB110-85526] - Western blot using NB110-85526 shows detection of a predominant band at ~33 kDa corresponding to DRAM (arrowhead) in K562 whole cell lysate. The predicted MW of DRAM is 26 kDa. DRAM was detected using 0.5 ug/ml (Lanes A), 1.0 ug/ml (Lanes B) and 2 ug/ml (Lanes C) concentrations of primary antibody.





Novus Biologicals USA

10730 E. Briarwood Avenue
Centennial, CO 80112
USA

Phone: 303.730.1950
Toll Free: 1.888.506.6887
Fax: 303.730.1966
novus@novusbio.com

Novus Biologicals Canada

461 North Service Road West, Unit B37
Oakville, ON L6M 2V5
Canada

Phone: 905.827.6400
Toll Free: 855.668.8722
Fax: 905.827.6402
canada@novusbio.com

Novus Biologicals Europe

19 Barton Lane
Abingdon Science Park
Abingdon, OX14 3NB, United Kingdom

Phone: (44) (0) 1235 529449
Free Phone: 0800 37 34 15
Fax: (44) (0) 1235 533420
info@bio-techne.com

General Contact Information

www.novusbio.com
Technical Support: technical@novusbio.com
Orders: orders@novusbio.com
General: novus@novusbio.com

Limitations

This product is for research use only and is not approved for use in humans or in clinical diagnosis. Primary Antibodies are guaranteed for 1 year from date of receipt.

For more information on our 100% guarantee, please visit www.novusbio.com/guarantee

Earn gift cards/discounts by submitting a review: www.novusbio.com/reviews/submit/NB110-85526

Earn gift cards/discounts by submitting a publication using this product:
www.novusbio.com/publications

